

There is no style
that is beyond our reach.
Think big, dare to dream
and explore all the possibilities
to achieve your perfect look.

From inspiration to installation,
you can expect the highest level
of personal service at every stage
of your ARCHiPROD experience.



ARCHiPROD UAB
Linkmenų g. 5,
Vilnius,
LT-09300
Lithuania

Tel: +370 5 200 2626
Email: info@archiprod.eu
www.archiprod.eu

JULY 2024



WINDOWS &
EXTERNAL DOORS



Welcome to ARCHIPROD,

Creating Dynamic Spaces

We specialise in creating quality bespoke solutions for any space, whether its a luxury residential property or the latest commercial development.

At ARCHIPROD, we specialise in helping a clients specify high performance timber, aluminium clad timber and aluminium windows and external doors. We offer an extensive choice of slimline and bold profiles with superior insulating capabilities, we create perfect harmony between durable materials, clean design and architectural challenges.

With an array of design options, opening types and configurations, these beautifully designed windows and doors can transform the appearance of any property, making it warmer, brighter and more inviting.

We work closely with customers, interior designers, architects and contractors to provide a personal service. This includes consultation to determine the design, configuration and specification. We make the entire process as simple as possible, offering solutions to challenges presented by complex design issues, building regulations and installation systems.

With our endless design possibilities we also offer colour cohesion, complementing flooring, staircases, doors and interior decor.

Bespoke Design Service

Our craftsmanship and variety of options gives customers, builders, architects and designers, the confidence to challenge the parameters of design and individuality. From design to installation, ARCHIPROD will guide you through the process.



ISO 9001:2015





CHOOSING YOUR WINDOWS & EXTERNAL DOORS

At ARCHiPROD, we specialise in helping architects, contractors and clients specify high performance windows and doors for luxury residential homes and commercial properties.

Windows and doors not only frame beauty from within, the right design can enhance the external appearance of any property. Performance and durability are important factors too. At ARCHiPROD we have you covered, whether it's timber, aluminium clad timber or thermally broken aluminium, we have a solution that is right for you.

Our bespoke service allows you to personalise our doors to your interior design project and create a unique and stunning impression.



ALUMINIUM

MASTERLINE 8 TILT & TURN WINDOWS & DOORS	6
SLIMLINE 38 CASEMENT WINDOWS & DOORS	12
SLIMLINE 68 CASEMENT WINDOWS	18
CS 77 TILT & TURN WINDOWS & DOORS	24
CP 130 SLIDING DOORS (LIFT & SLIDE).....	30
CF 77 BI-FOLD DOORS.....	36

ALUMINIUM CLAD TIMBER

COTO 62 CASEMENT WINDOWS	44
EURO 78 TILT & TURN WINDOWS, SLIDING DOORS	50
EURO 94 TILT & TURN WINDOWS, SLIDING DOORS	58
CASEMENT 60 CASEMENT WINDOWS & DOORS	66
CASEMENT 78 CASEMENT WINDOWS & DOORS	74

TIMBER

EURO 78 TILT & TURN WINDOWS, SLIDING DOORS	84
EURO 94 TILT & TURN WINDOWS, SLIDING DOORS	92
CASEMENT 60 CASEMENT WINDOWS & DOORS	100
CASEMENT 78 CASEMENT WINDOWS & DOORS	108
BI-FOLD DOORS.....	116
SLIDING SASH WINDOWS.....	120

OPTIONS

Window & Door Styles	126
Materials & Finishes	128
Glass Specification	130
Window Vents	131
Window Gaskets	131
Window Handles	132
Door Handles	134

ALUMINIUM WINDOWS & DOORS

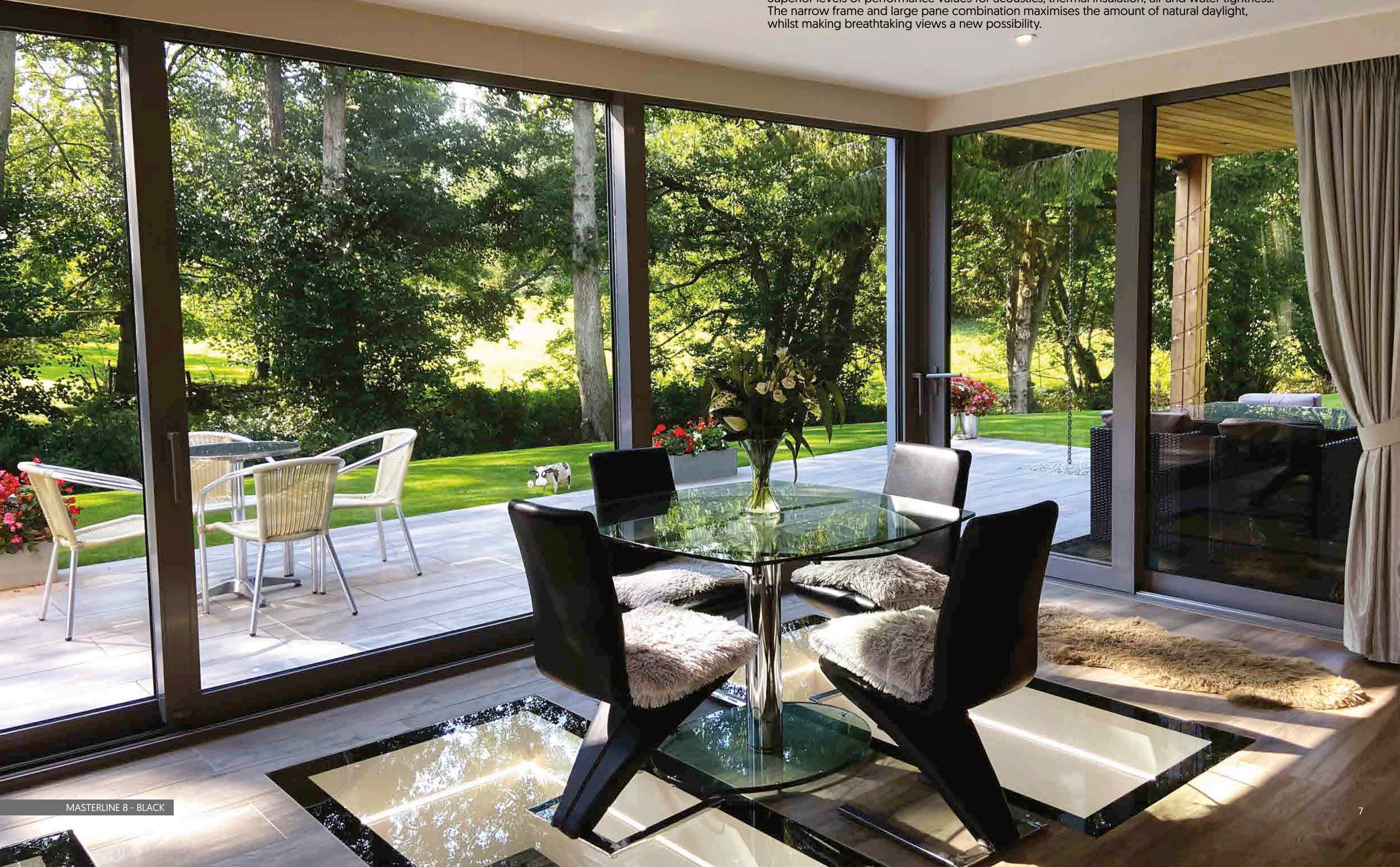
At ARCHiPROD, we specialise in helping architects, contractors and clients specify high performance aluminium windows and doors - with a choice of slimline and bold profiles with superior insulating capabilities, we create perfect harmony between durable materials, clean design and architectural challenges.

With an array of design options, opening types and configurations, these beautifully designed doors can transform the appearance of any space, making it warmer, brighter and more inviting.



ALUMINIUM - MASTERLINE 8 WINDOWS & DOORS

Superior levels of performance values for acoustics, thermal insulation, air and water tightness. The narrow frame and large pane combination maximises the amount of natural daylight, whilst making breathtaking views a new possibility.



ALUMINIUM - MASTERLINE 8 WINDOWS & DOORS

ARCHIPROD's MasterLine 8 is an innovative Aluminium Window & Door System - thermally-broken, multi-chambered, which offers superior levels of performance values for acoustics, thermal insulation, air and water tightness. Three different levels of insulation can be specified, offering solutions for high insulation and low energy. A wide range of window styles can be made, inward or outward opening, designed to suit any type of luxury home or commercial building. The narrow frame and large pane combination maximises the amount of natural daylight, whilst making breathtaking views a new possibility.



CHOICE OF PROFILES

Four design variants, each with its own distinct look and feel, so that every architectural style can be achieved.



FUNCTIONAL



DECO



HIDDEN VENT



RENAISSANCE

- * **FUNCTIONAL** - Clean line design that is beautiful in its simplicity, suitable for modern and contemporary buildings.
- * **DECO** - Modern, unique design for a truly contemporary feel. The sash is recessed to the exterior side and the sloped detailing brings a fine palette of reflections and shading.
- * **HIDDEN VENT** - Modern, minimalist appearance. The vents are covered by the outer frames and transoms, which allows for a concealed install of the opening elements behind the window reveal.
- * **RENAISSANCE** - Traditional ogee detailing found in heritage windows. The sash is recessed to the frame on the exterior side and the detailing is more refined.



ALUMINIUM - MASTERLINE 8 WINDOWS & DOORS

Aluminium MasterLine 8 Windows can be made in a choice of configurations to suit your requirements: fixed sash, direct glazed, single sash, multi sash, combination windows. Opening sashes can be specified as fixed, side hung or top hung.

Fire escape windows can be configured to match your design and to comply with Fire Safety Regulations Part B1. Aluminium MasterLine 8 Windows can be made in a choice of window styles:

- * **CASEMENT**
Side opening sashes with top opening fanlights
- * **TILT & TURN**
A more modern style with larger sections that open inwards

MasterLine 8 Aluminium Doors can be made in a choice of configurations to suit your requirements: including full height glass and fixed panels. Different units can be combined to create more complex constructions such as curtain walling, screens and patios.

- * **PARALLEL OPENING**
Generally used as part of a curtain wall design with a 'scissor hinge'
- * **CURTAIN WALLING**
Generally used for commercial properties or to create a double height atrium

PREMIUM FEATURES & SPECIFICATION

- * Multi-chamber 77mm profile
- * 4 profile designs options
- * Thermal break for increased insulation
- * 3 levels of insulation
- * 16mm double glazed / up to 72mm triple glazed
- * Outward or inward opening
- * Strong and durable window system
- * Low maintenance aluminium profile
- * U-value down to 1.0 W/m²K depending on specification
- * Up to C4 (600 Pa) air-tightness
- * Up to E1200 Pa water-tightness
- * Up to C5 (2000 Pa) wind load resistance
- * Up to 49 dB acoustic performance
- * PAS 24 Certified
- * Made to Measure, to your exact sizes.
Sash width: Max. 1700mm*
Sash height: Max. 2800mm*
*Depending on parameters, wind load and specification

SPECIFICATION & OPTIONS see pages 126 - 135

- * Choice of Window Styles
- * Choice of Door Configurations
- * Made to measure sizes
- * Coloured finishes
- * Glazing options
- * Choice of handles



ALUMINIUM - SLIMLINE 38 WINDOWS & DOORS

With its slender look, the SlimLine 38 is the perfect window for modern homes as well as for the renovation of steel-frames, where respecting the original design is of utmost importance.



ALUMINIUM - SLIMLINE 38 WINDOWS & DOORS

ARCHIPROD's SlimLine 38 Aluminium Window System offers high levels of performance with excellent levels of security, weather resistance and thermal insulation. With its slender look, the SlimLine 38 is the perfect window for modern homes as well as for the renovation of steel-frames, where respecting the original design is of utmost importance. The slim frames and clean lines make this window ideal for both contemporary and more traditional properties, as the design of the window mimics the sight lines of original steel-framed windows.



CHOICE OF PROFILES

Three ultra slim design variants, each with its own distinct look and feel, so that every architectural style can be achieved.



CLASSIC



CUBIC



FERRO

- * CLASSIC - Traditional external feature for a heritage feel.
- * CUBIC - Clean lines for a modern look.
- * FERRO - External detail, flush outer frame.



ALUMINIUM - SLIMLINE 38 WINDOWS & DOORS

Aluminium SlimLine 38 Windows can be made in a choice of configurations to suit your requirements: fixed sash, direct glazed, single sash, multi sash, combination windows. Opening sashes can be specified as fixed, side hung or top hung.

Fire escape windows can be configured to match your design, and to comply with Fire Safety Regulations Part B1. Window can be made in a choice of window styles:

- * **CASEMENT**
Side opening sashes with top opening fanlights
- * **TILT & TURN**
A more modern style with larger sections that open inwards

Slimline 38 Aluminium Doors can be made in a choice of configurations to suit your requirements: incorporating full height glass and fixed panels.

PREMIUM FEATURES & SPECIFICATION

- * Ultra slim frame 38mm
- * 3 profile designs options
- * Thermal break for increased insulation
- * 16mm double glazed / 55mm triple glazed
- * Outward opening
- * Can be glazed on inside or outside
- * Easy clean egress hinge
- * Strong and durable window system
- * Secured by Design accreditation
- * Low maintenance aluminium profile
- * Window Energy Rating up to A++ with tripled glazed unit, up to A with double glazed unit
- * U-value as low as 1.4W/m²K with tripled glazed unit, 1.9W/m²K double glazed unit
- * Up to C4 (600 Pa) air-tightness
- * Up to 9A (600 Pa) water-tightness
- * Up to C3 (1200 Pa) wind load resistance
- * Up to 45 dB acoustic performance
- * PAS 24 Certified
- * Made to Measure, to your exact sizes.
Sash width: Max. 1200mm*
Sash height: Max. 2800mm*
*Depending on parameters, wind load and specification

SPECIFICATION & OPTIONS see pages 126 - 135

- * Choice of Window Styles
- * Choice of Door Configurations
- * Fire Escape options
- * Made to measure sizes
- * Coloured finishes
- * Glazing options
- * Choice of handles



ALUMINIUM - SLIMLINE 68 WINDOWS

Superior levels of performance values for acoustics, thermal insulation, air and water tightness. The narrow frame and large pane combination maximises the amount of natural daylight, whilst making breathtaking views a new possibility.



ALUMINIUM - SLIMLINE 68 WINDOWS

ARCHIPROD's SlimLine 68 Aluminium Windows are specifically designed to meet the demand for an outward opening window with slim profiles to maximise the glass area to let in more natural daylight. The slim frames and clean lines make this window ideal for both contemporary and traditional properties.



CHOICE OF PROFILES

Four design variants, each with its own distinct look and feel, so that every architectural style can be achieved.



STANDARD



CLASSIC



FERRO



HERITAGE

- * **STANDARD** - Functional design, slim outer frame.
- * **CLASSIC** - Modern design for a contemporary feel.
- * **FERRO** - Clean lines, flush outer frame.
- * **HERITAGE** - Traditional style with slim outer frame.



ALUMINIUM - SLIMLINE 68 WINDOWS

SlimLine 68 Aluminium Windows are made to measure and can be made in a choice of configurations to suit your requirements: fixed sash, direct glazed, single sash, multi sash, combination windows. Opening sashes can be specified as fixed, side hung or top hung.

Fire escape windows can be configured to match your design, and to comply with Fire Safety Regulations Part B1.

Window can be made in a choice of window styles:

- * **CASEMENT**
Side hung and top hung opening sashes

PREMIUM FEATURES & SPECIFICATION

- * Slim frame 68mm
- * 4 profile designs options
- * Thermal break for increased insulation
- * 26mm double glazed / 42mm triple glazed
- * Outward opening
- * Can be glazed on inside or outside
- * Easy clean egress hinge
- * Strong and durable window system
- * Low maintenance aluminium profile
- * Secured by Design accreditation
- * Window Energy Rating up to A++ with tripled glazed unit, up to A with double glazed unit
- * U-value as low as 1.1W/m2K with tripled glazed unit, 1.4W/m2K double glazed unit
- * Up to C4 (600 Pa) air-tightness
- * Up to E1050 (E1050 Pa) water-tightness
- * Up to E2400 (2400 Pa) wind load resistance
- * Up to 47 [-2;-7] dB acoustic performance
- * PAS 24 Certified
- * Made to Measure, to your exact sizes.
Side hung: Sash width: Max. 738mm*
Sash height: Max. 1500mm*
Top hung: Sash width: Max. 1300mm*
Top hung: Sash height: Max. 1470mm*
*Depending on parameters, wind load and specification

SPECIFICATION & OPTIONS see pages 126 - 135

- * Choice of Window Styles
- * Fire Escape options
- * Made to measure sizes
- * Coloured finishes
- * Glazing options
- * Choice of handles



ALUMINIUM - CS 77 WINDOWS & DOORS

With its bold styling and clean lines, the CS 77 can be made in large frames, ideal for luxury modern homes, where a contemporary design is required.



ALUMINIUM - CS 77 68 WINDOWS & DOORS

Our CS 77 Aluminium Window & Door System is a thermally-broken, multi-chambered system offering high levels of security, weather resistance and thermal insulation. The fibreglass-reinforced polyamide strips and weather gaskets are designed with ribs and hollow chambers to achieve superior thermal insulation levels. With its bold styling and clean lines, the CS 77 can be made in large frames, ideal for luxury modern homes or commercial properties, where a contemporary design is required. CS 77 windows can be specified as inward or outward opening. Vents can be glazed from the inside as well as the outside and are available on a standard and an HI insulation level.



CHOICE OF PROFILES

Three design variants, each with its own distinct look and feel, so that every architectural style can be achieved.



FUNCTIONAL



HIDDEN VENT



RENAISSANCE

- * **FUNCTIONAL** - Clean line design that is beautiful in its simplicity, suitable for modern and contemporary buildings.
- * **HIDDEN VENT** - Modern, minimalist appearance. The vents are covered by the outer frames and transoms, which allows for a concealed install of the opening elements behind the window reveal.
- * **RENAISSANCE** - Traditional ogee detailing found in heritage windows. The sash is recessed to the frame on the exterior side and the detailing is more refined.



CS77 - BLACK

ALUMINIUM - CS 77 WINDOWS & DOORS

CS 77 Aluminium Windows can be made in a choice of configurations to suit your requirements: fixed sash, direct glazed, single sash, multi sash, combination windows. Opening sashes can be specified as side hung or top hung.

Fire escape windows can be configured to match your design, and to comply with Fire Safety Regulations Part B1. Aluminium CS 77 Window can be made in a choice of window styles:

*** CASEMENT**

Side hung and top hung opening sashes

CS 77 Aluminium Doors can be made in a choice of configurations to suit your requirements: including full height glass and fixed panels. Different units can be combined to create more complex constructions such as curtain walling, screens and patios.

*** CURTAIN WALLING / PARALLEL OPENING**

Generally used for commercial properties or to create a double height atrium or stairwell

PREMIUM FEATURES & SPECIFICATION

- * Multi-chamber 77mm profile
- * 3 profile designs options
- * Thermal break for increased insulation
- * 16mm double glazed / 52mm triple glazed
- * Outward or inward opening
- * Can be glazed on inside or outside
- * Easy clean egress hinge
- * Secured by Design accreditation
- * Window Energy Rating A++ tripled glazed, A double glazed
- * U-value, 0.94W/m2K with tripled glazed, 1.2W/m2K double glazed
- * Up to C4 (600 Pa) air-tightness
- * Up to 9A (600 Pa) water-tightness
- * Up to C3 (1200 Pa) wind load resistance
- * Up to 42 dB acoustic performance
- * PAS 24 Certified
- * Made to Measure, to your exact sizes
Sash width: Max. 1200mm
Sash height: Max. 2800mm

SPECIFICATION & OPTIONS see pages 126 - 135

- | | |
|---------------------------------|---------------------|
| * Choice of Window Styles | * Coloured finishes |
| * Choice of Door Configurations | * Glazing options |
| * Made to measure sizes | * Choice of handles |



ALUMINIUM - CP 130 SLIDING DOORS

The CP 130 Aluminium Door System offers industry-leading performance on thermal insulation, weather resistance, noise reduction and security whilst remaining low maintenance.



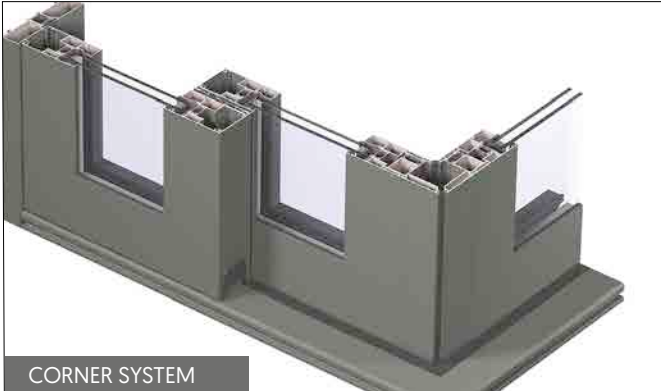
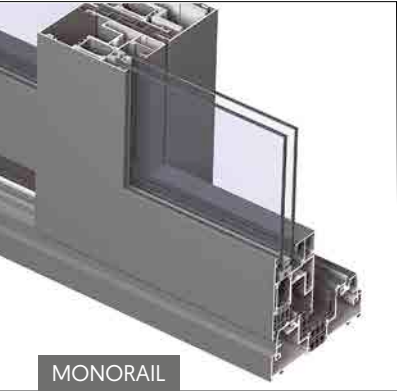
ALUMINIUM - CP 130 SLIDING DOORS

The CP 130 Aluminium Door System offers industry-leading performance on thermal insulation, weather resistance, noise reduction and security whilst remaining low maintenance. The system not only glides smoothly, it also has a slim-line mid-section interlock to maximise the glass area and can be specified with our integrated ventilation system, Ventalis.. With a double glazed sealed unit, the CP 130 can offer U-value as low as 1.5 W/m2K; with triple glazing, this can be improved to 1.1 W/m2K.



CHOICE OF TRACK SYSTEMS

The CP 130 sliding door system uses durable, stainless steel wheels and rails for ease of operation. Choose from a range of designs using one, two or three tracks with multiple sliding doors (detailed overleaf).



CORNER SYSTEM

Our revolutionary open corner system makes it possible to open up two sides of a room without a corner post, creating a truly remarkable architectural feature. Designed exclusively for the CP 130-LS duo rail system, this clever corner system comprises two sliding units that meet at a corner. When closed, the thick double weather gaskets protect against the elements; you can then slide the two doors apart to open up the whole corner with no fixed corner post to get in the way or obstruct the view.



ALUMINIUM - CP 130 SLIDING DOORS

Aluminium CP 130 Sliding Doors can be made in a range of designs using one, two or three tracks with multiple sliding doors:

* MONORAIL

A more modern style with larger sections that open inwards. This combines a sliding door with a fixed glazed pane for a minimalistic look. The fixed pane is normally set to the inside of the track and is internally beaded.

* DUO RAIL

A duo rail system integrates two glazed opening doors with an identical appearance, giving an aesthetically pleasing and versatile sliding door. Both doors can be sliding, giving total flexibility.

* 3 RAIL

A 3-rail system makes it possible for a third opening door leaf. This solution allows door leaves one and two to slide behind leaf three, opening up two-thirds of the width to the outside.

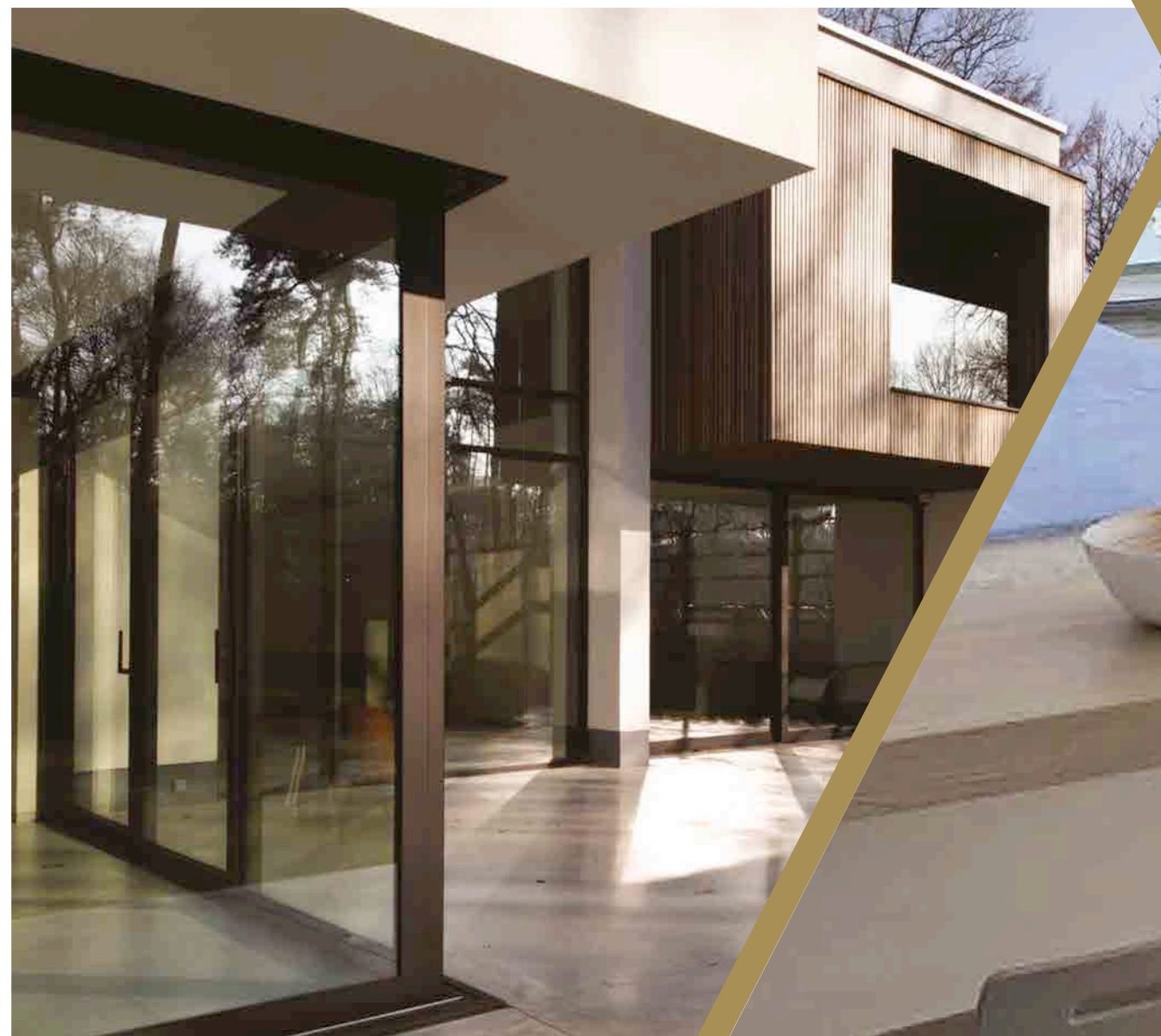


PREMIUM FEATURES & SPECIFICATION

- * Multi-chamber 130mm profile
- * Monorail, Duo Rail or 3 rail track system
- * Thermal break for increased insulation
- * Double glazed unit option, 43mm triple glazed unit option
- * Slide or lift and slide opening
- * Corner solution
- * Secured by Design accreditation
- * Low maintenance aluminium profile
- * Air tightness: C4 (600 Pa)
- * Water tightness: E750 (750 Pa)
- * Wind load resistance B5 (2000 Pa)
- * Acoustic performance 35-39dB
- * U-value 1.4W/m²K - 1.0W/m²K
- * PAS 24 Certified
- * Made to Measure, to your exact sizes

SPECIFICATION & OPTIONS see pages 126 - 135

- * Choice of Door Configurations
- * Glazing options
- * Made to measure sizes
- * Choice of handles
- * Coloured finishes



ALUMINIUM - CF 77 BI-FOLD DOORS

ARCHiPROD CF 77 Bi-fold Doors are a modern and innovative design statement that can transform an ordinary room and make it a feature of any property - ideal for flooding your home with natural daylight, opening up your house to the garden and letting the outside in.

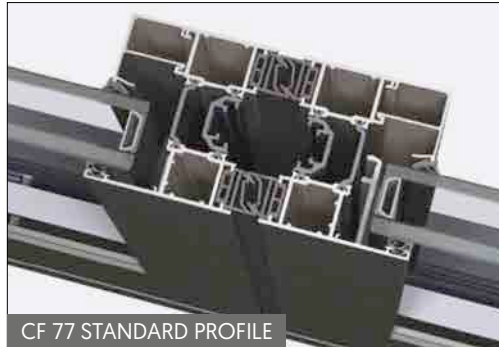


ALUMINIUM - CF 77 BI-FOLD DOORS

These doors lead the way in terms of performance with reliable, easy and smooth operation that is a testament to the careful design and premium specification of every component part. Bi-fold doors can be designed to fit almost any space, size, or configuration using up to 8 door leaves. Available in maximum sizes to facilitate the design of folding doors up to a very impressive 3m in height.

CHOICE OF PROFILES

Our standard profile CF 77, or a slim-line variant can be chosen. The CF 77-SL features a narrower door leaf profile to maximise the glass area.



CF 77 STANDARD PROFILE



CF 77 - SL SLIMLINE PROFILE



CHOICE OF THRESHOLD OPTIONS

Both the standard profile, and the slim-line variant, are available in four different threshold solutions.



HIGH PERFORMANCE



DOUBLE WEATHER SEAL



LOW THRESHOLD



FLAT BOTTOM

Each threshold option offers a trade-off between weather performance and ease of passage.

- * **HIGH PERFORMANCE** - Offers the best air, wind and water performance but has the highest threshold step.
- * **DOUBLE WEATHER SEAL** - Combines good weather resistance with a lower threshold.
- * **LOW THRESHOLD** - Can be set into the floor to meet the requirements of Building Regulations.
- * **FLAT BOTTOM** - Allows easy passage with no step, but this is at the expense of weather-proofing.



CF 130 - BLACK

ALUMINIUM - CF 77 BI-FOLD DOORS

CF 77 Bi-fold Doors can be specified with our standard profile or a slim-line variant, the CF 77-SL, which features a narrower door leaf profile to maximise the glass area. Both profiles are available in four different threshold solutions, see previous page.

Available in a number of configurations between 2 and 8 door leaves and the option for slim sightlines, you can choose a design where all doors stack to the same side, or a design where some open one way and some the other.

Designs with a single traffic door and 4 threshold options enable you to slip quickly and easily out into the garden, while leaving the other doors locked in place.

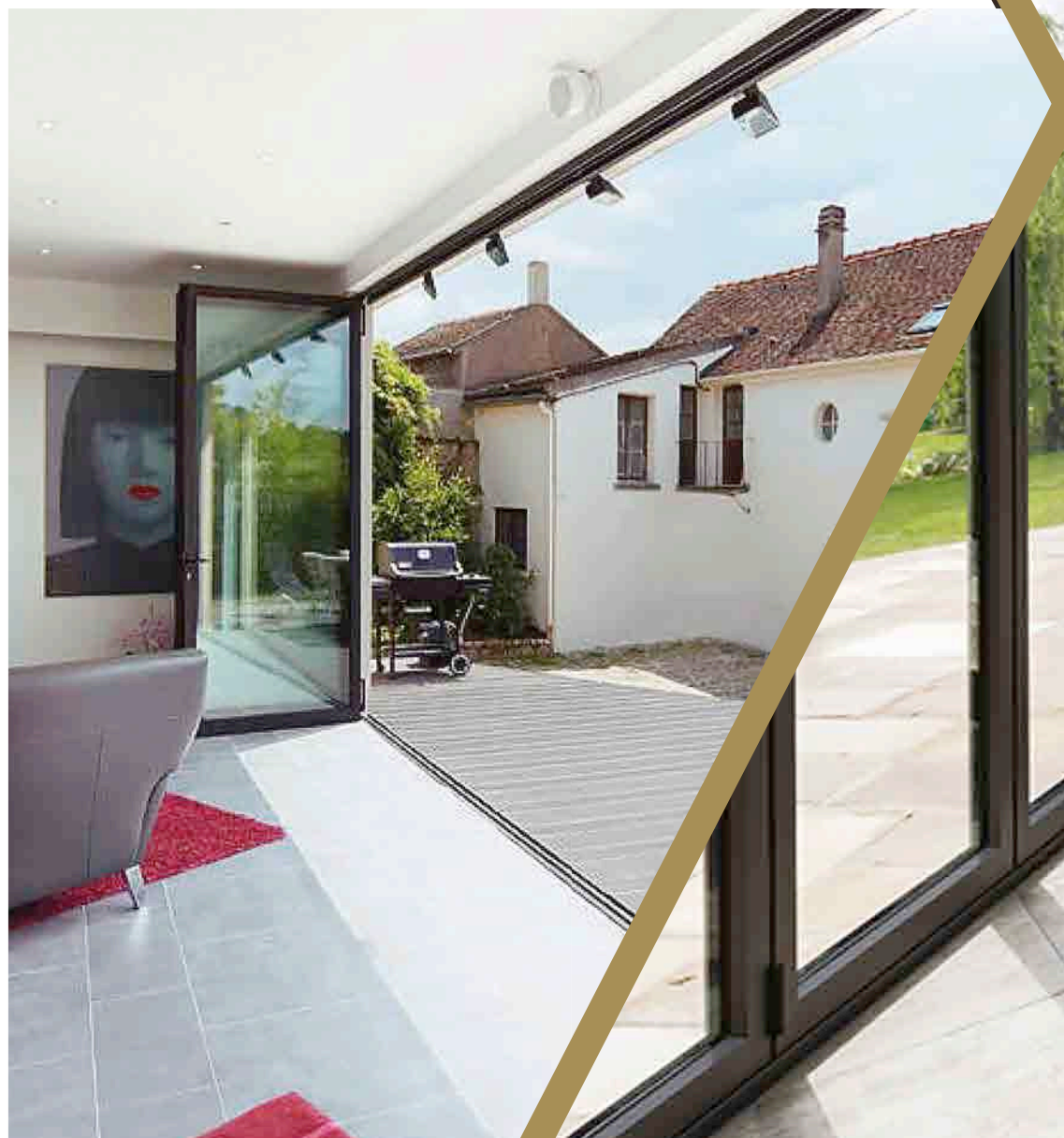
PREMIUM FEATURES & SPECIFICATION

- * Multi-chamber 77mm profile
- * Standard or slimline design
- * 4 threshold options
- * Thermal break for increased insulation
- * Double glazed / 63mm triple glazed
- * Outward or inward opening
- * High specification steel rollers
- * Secured by Design accreditation*
- * Low maintenance aluminium profile
- * Air tightness: Up to C4 (600 Pa)*
- * Water tightness: Up to 9A (600 Pa)*
- * Wind load resistance: Up to C3 (1200 Pa)*
- * Acoustic performance 34-45dB
- * U-value, down to 1.64W/m2K
- * PAS 24 Certified*
- * Made to Measure, to your exact sizes
Sash width: Max. 1200mm
Sash height: Max. 3000mm

*Not applicable to Flat Bottom Profile

SPECIFICATION & OPTIONS see pages 126 - 135

- * Choice of Door Configurations
- * Glazing options
- * Made to measure size
- * Choice of handles
- * Coloured finishes



ALUMINIUM CLAD TIMBER WINDOWS AND DOORS

Our aluminium clad timber doors offer superior quality and durability - combining the best features of both materials. Timber is heat insulating and sound absorbing, providing comfort and warmth. The aluminium profile is low maintenance, lightweight, protective and strong. The entire window and door system is an excellent modern architecture solution.



ALUMINIUM CLAD TIMBER - COTO 62 WINDOWS

Slim contemporary high performance windows feature triple layered laminated timber on the inside and low maintenance aluminium cladding on the outside. An innovative and extremely energy efficient style, with slim profiles and extremely low U-values. Perfect for exceptionally large window sizes.



ALUMINIUM CLAD TIMBER - COTO 62 WINDOWS

A slim, modern and sleek architectural profile system which provides narrow sight lines and lets in the maximum amount of natural light. These contemporary windows offer the aesthetic appeal of internal wood with the added benefit of a low-maintenance aluminium clad exterior.



With their exceptional performance and contemporary design, these windows are an excellent choice for any modern property.

ALUMINIUM CLAD TIMBER PROFILE

43mm profile made of 3 layers of selected wood beam.



ALUMINIUM EXTERIOR



TIMBER INTERIOR



ALUMINIUM CLAD TIMBER - COTO 62 WINDOWS

Aluminium Clad Timber Windows are made to measure and can be made in a choice of configurations to suit your requirements: fixed sash, direct glazed, single sash, multi sash, combination windows.

* CASEMENT

Side hung, projecting side hung, top hung and top swing opening sashes

PREMIUM FEATURES & SPECIFICATION

- * High quality energy efficient timber windows
- * Choice of Pine, Oak, Larch and Meranti
- * Aluminium clad exterior
- * Heat transfer coefficient $U=0.77 \text{ W/m}^2\text{K}$ **
- * Thermal break section to separate wood and aluminium
- * 43mm profile made of 3 layers of selected wood beam
- * Up to 48mm double-glazed or triple-glazed unit
- * Outward opening
- * Long-lasting hardware mechanisms made of stainless steel, coated with zinc and aluminium
- * Multi-point locking
- * Dual weather-stripping
- * Effective window protection from condensation
- * Low maintenance aluminium profile
- * Wide choice of colours for varnishes and paints
- * Modern ecological and durable timber, FSC® certificate
- * 4 (600 Pa) air-tightness
- * E1200 water-tightness
- * C5 (1200 Pa) wind load resistance
- * 35 dB acoustic performance with double glazed unit
- * Up to 46 dB acoustic performance with triple glazed unit
- * PAS 24 Certified
- * Made to Measure, to your exact sizes
Sash width: 280mm - 1600mm
Sash height: 350mm - 2450mm
Direct glazed width: 250mm - 3500mm
Direct glazed height: 250mm - 500mm

** Values are tested for 1230mm x 1480mm single opening window. Triple glazed 48 mm argon filled glass unit, "warm edge" spacer and two layers of Low-E coating.

SPECIFICATION & OPTIONS see pages 126 - 135

- * Choice of Window Styles
- * Made to measure sizes
- * Materials & Finishes
- * Glazing options
- * Choice of handles



ALUMINIUM CLAD TIMBER - EURO 78 WINDOWS & SLIDING DOORS

ARCHIPROD 'Tilt & Turn' windows and 'Tilt & Slide' doors are made from a unique 78mm profile system, internally beaded for improved security and opening in for easy cleaning. With designs available in larger sizes, they are suitable for apartments, luxury houses and commercial buildings.



ALUMINIUM CLAD TIMBER - EURO 78 WINDOWS

ARCHIPROD 'Tilt & Turn' windows are made from a unique 78mm profile system, internally beaded for improved security and opening in for easy cleaning. The external aluminium profile is lightweight and strong giving protection against harmful environmental effects whilst also being very low maintenance. Multi-point locking and dual weather-stripping satisfy the most demanding construction and architectural standards for security, strength and insulation. A single lever handle controls all window functions.

With designs available in larger sizes, Euro 78 windows are suitable for apartments, luxury houses and commercial buildings.



Triple glazed and argon filled Euro 78 windows achieve 1.00 W/m²K U value, providing superior insulation, which is significantly higher in comparison to standard double glazed windows. Good acoustic values can also be achieved, suitable for houses close to busy roads or other high noise generating objects.

ALUMINIUM CLAD TIMBER PROFILE

78mm profile made of 3 layers of selected wood beam.



ALUMINIUM CLAD TIMBER - EURO 78 WINDOWS

Aluminium Clad Timber Windows are made to measure and can be made in a choice of configurations to suit your requirements: fixed sash, direct glazed, single sash fixed sash, multi sash, combination windows. Opening sashes can be specified as fixed, opening in, tilt, or tilt & turn. Different units can be combined to create more complex constructions such as curtain walling, screens, patios, bays and bows, to your exact specifications. Fire escape windows can be configured to match your design, and to comply with Fire Safety Regulations Part B1.

* TILT & TURN

A more modern style with larger sections that open inwards

PREMIUM FEATURES & SPECIFICATION

- * High quality energy efficient timber windows
- * Choice of Pine, Oak, Larch and Meranti
- * Aluminium clad exterior
- * Heat transfer coefficient $U=1.0 \text{ W/m}^2\text{K}$ **
- * Internally beaded, and inward opening for enhanced security
- * 78mm profile made of 3 layers of selected wood beam
- * Up to 42mm double-glazed or triple-glazed unit
- * Triple sealing system, provides extremely good heat and sound insulation
- * Long-lasting hardware mechanisms made of stainless steel, coated with zinc and aluminium
- * Multi-point locking
- * Dual weather-stripping
- * Effective window protection from condensation
- * Low maintenance aluminium profile
- * Wide choice of colours for varnishes and paints
- * Modern ecological and durable timber, FSC® certificate
- * 4 (600 Pa) air-tightness
- * 9A (600 Pa) water-tightness
- * C5 (2000 Pa) wind load resistance
- * 35 dB acoustic performance with double glazed unit
- * Up to 48 dB acoustic performance with triple glazed unit
- * PAS 24 Certified
- * Made to Measure, to your exact sizes
 - Sash width: 280mm - 1600mm
 - Sash height: 350mm - 2450mm
 - Direct glazed width: 250mm - 3500mm
 - Direct glazed height: 250mm - 2500mm

** Values are tested for 1230mm x 1480mm single opening window. Triple glazed 42 mm argon filled glass unit, "warm edge" spacer and two layers of Low-E coating.

SPECIFICATION & OPTIONS see pages 126 - 135

- | | |
|---------------------------|------------------------|
| * Choice of Window Styles | * Materials & Finishes |
| * Fire Escape options | * Glazing options |
| * Made to measure sizes | * Choice of handles |



ALUMINIUM CLAD TIMBER - EURO 78 SLIDING DOORS

Our Aluminium Clad Timber Sliding Doors (Tilt & Slide) are ideal where large and heavy doors are needed. Elements with large sashes operate easily and smoothly, controlled with one hand. The tilt function allows ventilation of premises without opening the whole door.

Tilt & Slide doors are made using the same profile system as Euro 78 Tilt & Turn inward opening windows. In addition to traditional sideways slide opening it tilts at the top for ventilation.

Aluminium Clad Timber Sliding Doors can be made in a choice of configurations to suit your requirements: incorporating full height glass and fixed panels. Different units can be combined to create more complex constructions such as curtain walling, screens, patios, to your exact specifications.

* TILT & SLIDE

Traditional sideways slide opening, also tilts inward at the top for ventilation.

PREMIUM FEATURES & SPECIFICATION

- * High quality energy efficient timber doors
- * Choice of Pine, Oak, Larch and Meranti
- * Aluminium clad exterior
- * Pre-hung, factory fitted door sets
- * Heat transfer coefficient $U=1.0 \text{ W/m}^2\text{K}$ **
- * Euro 78mm profile made of 3 layers of exclusive wood beam
- * Tilt and slide opening
- * Internally beaded for enhanced security
- * Up to 42mm double-glazed or triple-glazed unit
- * Multi point locking, high security espagnolette locks, latch and mortice deadlock
- * Hardwood cill or low aluminium threshold
- * Wide choice of colours for varnishes and paints
- * Modern ecological and durable timber, FSC® certificate
- * 4 [600 Pa] air-tightness
- * 3A water-tightness
- * C4 [1600 Pa] wind load resistance
- * 32 dB acoustic performance with double glazed unit
- * Up to 48 dB acoustic performance with triple glazed unit
- * PAS 24 Certified option
- * Made to Measure, to your exact sizes

** Values are tested for 78 mm sash 1185mm x 1987mm, triple glazed 42mm argon filled glass unit, "warm edge" spacer and two layers of Low-E coating.

SPECIFICATION & OPTIONS see pages 126 - 135

- * Choice of Door Configurations
- * Glazing options
- * Made to measure sizes
- * Choice of handles
- * Materials & Finishes



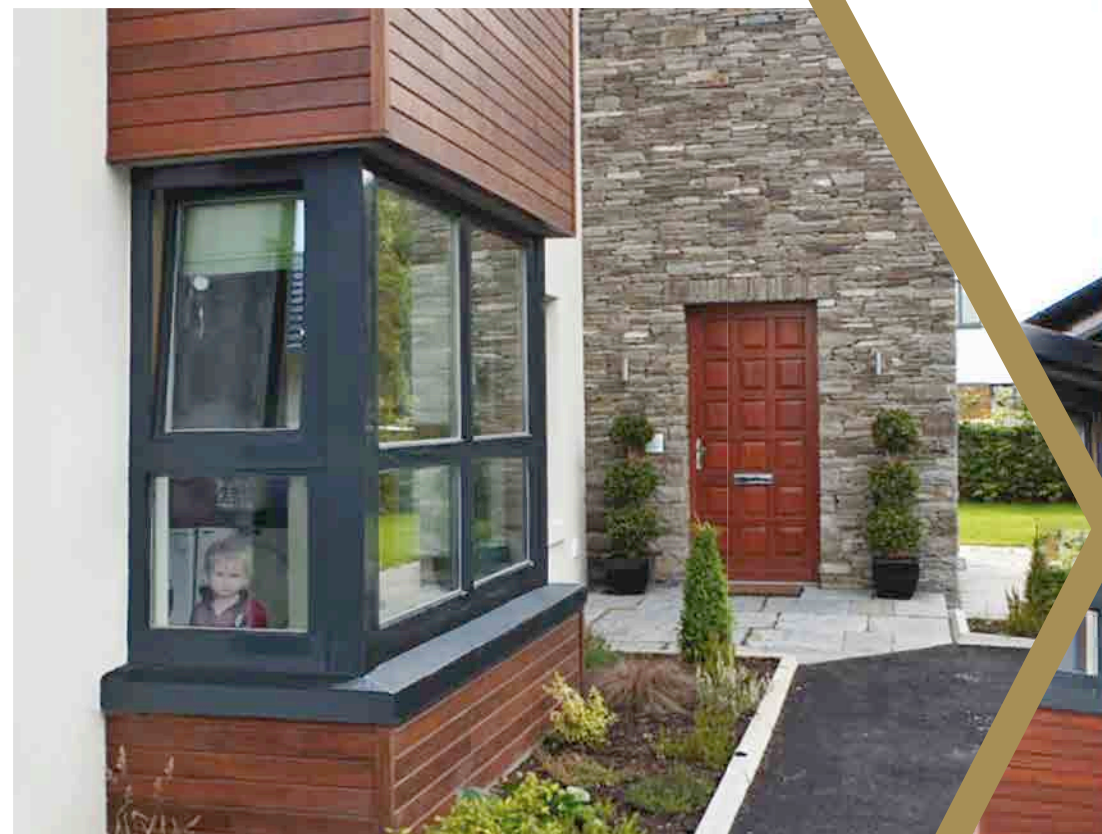
ALUMINIUM CLAD TIMBER - EURO 94 WINDOWS & SLIDING DOORS

EURO 94 ALUMINIUM CLAD TIMBER WINDOWS & DOORS meet A++ energy rating and are suitable for apartments, private houses and commercial buildings. Made from a unique 94 mm profile system, internally beaded for improved security and open in for easy cleaning.



ALUMINIUM CLAD TIMBER - EURO 94 WINDOWS

TILT & TURN EURO 94 ALUMINIUM CLAD TIMBER WINDOWS meet A++ energy rating and are suitable for apartments, private houses and commercial buildings. Windows are made from a unique 94mm profile system, internally beaded for improved security and open in for easy cleaning. The external aluminium profile is lightweight and strong giving protection against harmful environmental effects whilst also being very low maintenance. Multi-point locking and dual weather-stripping satisfy the most demanding construction and architectural standards for security, strength and insulation.



Triple glazed and argon filled Euro 94 windows, "warm edge" spacer and two layers of Low-E coating achieves 0.83 W/m²K U value and is suitable to use in projects that are built to Passive house standard. The Euro 94 window gives the greatest thermal efficiency. Good acoustic values can be achieved, suitable for houses close to busy roads or other high noise locations.

ALUMINIUM CLAD TIMBER PROFILE

94mm profile made of 4 layers of selected wood beam.



ALUMINIUM EXTERIOR



TIMBER INTERIOR

ALUMINIUM CLAD TIMBER - EURO 94 WINDOWS

Aluminium Clad Timber Windows are made to measure and can be made in a choice of configurations to suit your requirements: fixed sash, direct glazed, single sash, multi sash, combination windows. Opening sashes can be specified as opening in, tilt, or tilt & turn. Different units can be combined to create more complex constructions such as curtain walling, screens, patios, bays and bows, to your exact specifications. Fire escape windows can be configured to match your design, and to comply with Fire Safety Regulations Part B1.

* TILT & TURN

A more modern style with larger sections that open inwards

PREMIUM FEATURES & SPECIFICATION

- * New generation energy efficient timber windows
- * Choice of Pine, Oak, Larch and Meranti
- * Aluminium clad exterior
- * Excellent energy performance - helps to reduce heating costs, suitable for passive houses
- * Heat transfer coefficient $U=0.83 \text{ W/m}^2\text{K}^{**}$
- * Wide 94mm profile made of 4 layers of selected wood beam
- * 52mm insulated triple-glazed units with warm thermal spacers
- * Superior quality selective glass
- * Internally beaded, and inward opening for enhanced security
- * Triple sealing system, provides good heat and sound insulation
- * Long-lasting hardware mechanisms made of stainless steel, coated with zinc and aluminium
- * Multi-point locking
- * Effective window protection from condensation
- * Low maintenance aluminium profile
- * Wide choice of colours for varnishes and paints
- * Modern ecological and durable timber, FSC® certificate
- * 4 [600 Pa] air-tightness
- * 9A [600 Pa] water-tightness
- * C5 [2000 Pa] wind load resistance
- * 48 dB acoustic performance with triple glazed unit
- * PAS 24 Certified
- * Made to Measure, to your exact sizes
 - Sash width: 280mm - 1600mm
 - Sash height: 350mm - 2450mm
 - Direct glazed width: 250mm - 3500mm
 - Direct glazed height: 250mm - 2500mm

** Values are tested for 1230mm x 1480mm single opening window. Triple glazed 52 mm argon filled glass unit, "warm edge" spacer and two layers of Low-E coating.

SPECIFICATION & OPTIONS see pages 126 - 135

- * Choice of Window Styles
- * Made to measure sizes
- * Materials & Finishes
- * Glazing options
- * Choice of handles



ALUMINIUM CLAD TIMBER - EURO 94 SLIDING DOORS

Our Aluminium Clad Timber Sliding Doors (Tilt & Slide) are ideal where large and heavy doors are needed. Elements with large sashes operate easily and smoothly, controlled with one hand. The tilt function allows ventilation of premises without opening the whole door.

Tilt & Slide doors are made using the same profile system as Euro 94 Tilt & Turn inward opening windows. In addition to traditional sideways slide opening it tilts at the top for ventilation.

Aluminium Clad Timber Sliding Doors can be made in a choice of configurations to suit your requirements: incorporating full height glass and fixed panels. Different units can be combined to create more complex constructions such as curtain walling, screens, patios, to your exact specifications.

* TILT & SLIDE

Traditional sideways slide opening, also tilts inward at the top for ventilation.

PREMIUM FEATURES & SPECIFICATION

- * High quality energy efficient timber doors
- * Choice of Pine, Oak, Larch and Meranti
- * Aluminium clad exterior
- * Pre-hung, factory fitted door sets
- * Heat transfer coefficient $U=1.0 \text{ W/m}^2\text{K}$ **
- * Euro 94mm profile made of 4 layers of exclusive wood beam
- * Tilt and slide opening
- * Internally beaded for enhanced security
- * 52mm insulated triple-glazed units with warm thermal spacers
- * Multi point locking, high security espagnolette locks, latch and mortice deadlock
- * Hardwood cill or low aluminium threshold
- * Wide choice of colours for varnishes and paints
- * Modern ecological and durable timber, FSC® certificate
- * 4 (600 Pa) air-tightness
- * 3A water-tightness
- * C4 (1600 Pa) wind load resistance
- * Up to 48 dB acoustic performance with triple glazed unit
- * PAS 24 Certified option
- * Made to Measure to your exact sizes.

** Values are tested for 78 mm sash 2191mm x 2244mm, triple glazed 42mm argon filled glass unit, "warm edge" spacer and two layers of Low-E coating.

SPECIFICATION & OPTIONS see pages 126 - 135

- * Choice of Door Configurations
- * Glazing options
- * Made to measure sizes
- * Choice of handles
- * Materials & Finishes



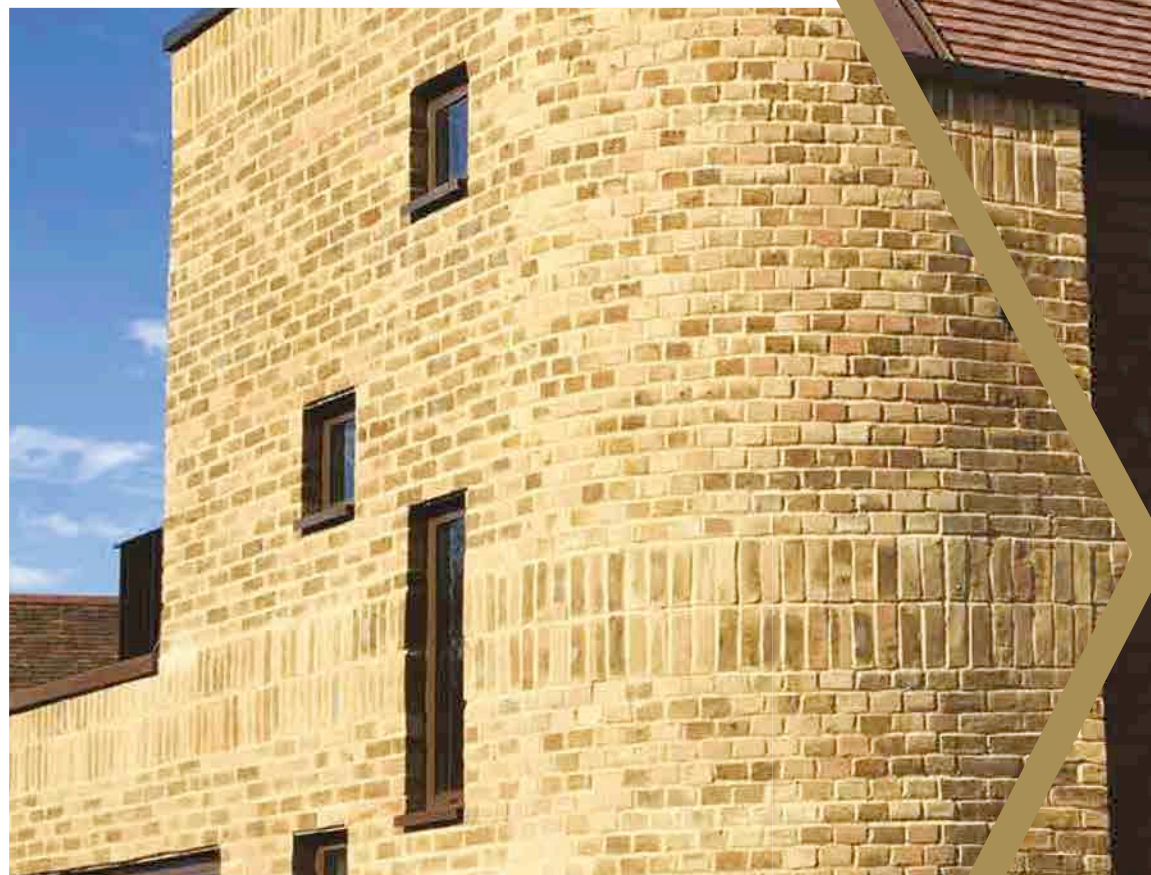
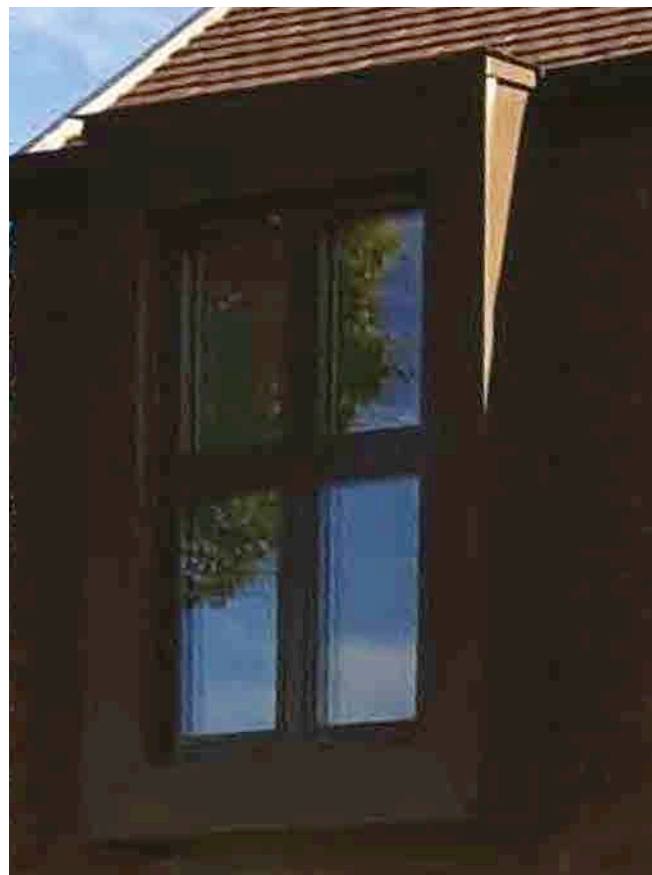
ALUMINIUM CLAD TIMBER - CASEMENT 60 WINDOWS & DOORS

Aluminium Clad Timber Casement 60 double glazed windows offer unparalleled performance, excellent quality and durability.



ALUMINIUM CLAD TIMBER - CASEMENT 60 WINDOWS

The stylish design includes perfectly flush joints with no unsightly grooves to give a feeling of traditional elegance combined with modern day technology - an excellent choice in more contemporary properties as well as traditional homes. The external aluminium profile is lightweight and strong, giving protection against harmful environmental effects whilst also being very low maintenance.



Double glazed and argon filled windows with 24 mm thickness glass unit, "warm edge" spacer and two layers of Low-E coating achieves a U value of 1.3 W/m²K. All casements incorporate modern multi point locking, high security espagnolette locks.

ALUMINIUM CLAD TIMBER PROFILE

60mm profile made of 3 layers of selected wood beam.



ALUMINIUM EXTERIOR



TIMBER INTERIOR



ALUMINIUM CLAD TIMBER - CASEMENT 60 WINDOWS

Aluminium Clad Timber Windows are made to measure and can be made in a choice of configurations to suit your requirements: fixed sash, direct glazed, single sash fixed sash, multi sash, combination windows. Opening sashes can be side hung or top hung. Different units can be combined to create more complex constructions such as curtain walling, screens, patios, bays and bows, to your exact specifications. Fire escape windows can be configured to match your design, and to comply with Fire Safety Regulations Part B1.

* CASEMENT

Side opening sashes with top opening fanlights

PREMIUM FEATURES & SPECIFICATION

- * High quality energy efficient timber windows
- * Choice of Pine, Oak, Larch and Meranti
- * Aluminium clad exterior
- * Heat transfer coefficient $U=1.3 \text{ W/m}^2\text{K}$ **
- * Outward opening, externally beaded
- * 60 mm profile made of 3 layers of selected wood beam
- * 24 mm double-glazed unit
- * Triple sealing system, provides extremely good heat and sound insulation
- * Long-lasting hardware mechanisms made of stainless steel, coated with zinc and aluminium
- * Multi point locking, high security espagnolette locks
- * Low maintenance aluminium profile
- * Wide choice of colours for varnishes and paints
- * Modern ecological and durable timber, FSC® certificate
- * 4 (600 Pa) air-tightness
- * 5A (200 Pa) water-tightness
- * C3 (1200 Pa) wind load resistance
- * PAS 24 Option
- * Made to Measure, to your exact sizes
 - Sash width: 280mm - 1600mm
 - Sash height: 350mm - 2450mm
 - Direct glazed width: 250mm - 3500mm
 - Direct glazed height: 250mm - 2500mm

** Values are tested for 1230mm x 1480mm single opening window. Double glazed 24 mm argon filled glass unit, "warm edge" spacer and two layers of Low-E coating.

SPECIFICATION & OPTIONS see pages 126 - 135

- | | |
|---------------------------|------------------------|
| * Choice of Window Styles | * Materials & Finishes |
| * Fire Escape options | * Glazing options |
| * Made to measure sizes | * Choice of handles |



ALUMINIUM CLAD TIMBER - CASEMENT 60 DOORS

Our Aluminium Clad Timber French and Single Casement Doors are made to measure and offer unparalleled performance, excellent quality and durability. Manufactured from engineered, multi-layered timber and fully factory finished. Opening in or out, fully equipped with integrated high security locking and internally beaded to ensure the safety of your home.

The stylish design includes perfectly flush joints with no unsightly grooves to give a feeling of traditional elegance combined with modern day technology - an excellent choice in more contemporary properties as well as traditional homes. Double glazed windows with 24mm thickness glass unit, "warm edge" spacer and two layers of Low-E coating achieves a U value of 1.3 W/m²K.

Aluminium Clad Timber Casement Doors can be made in a choice of configurations to suit your requirements: incorporating full height glass or panels, single or double doors with sidelights, or, combination windows. Different units can be combined to create more complex constructions such as curtain walling, screens, patios, to your exact specifications.

* CASEMENT Side opening

PREMIUM FEATURES & SPECIFICATION

- * High quality energy efficient timber doors
- * Choice of Pine, Oak, Larch and Meranti
- * Aluminium clad exterior
- * Pre-hung, factory fitted door sets
- * Heat transfer coefficient $U=1.3 \text{ W/m}^2\text{K}$ **
- * 60mm profile made of 3 layers of exclusive wood beam
- * Outward or inward opening
- * Internally beaded for enhanced security
- * 24 mm double-glazed unit
- * Multi point locking, high security espagnolette locks, latch and mortice deadlock
- * Hardwood cill or low aluminium threshold
- * Wide choice of colours for varnishes and paints
- * Modern ecological and durable timber, FSC® certificate
- * 4 (600 Pa) air-tightness
- * 1A water-tightness
- * C3 (1200 Pa) wind load resistance
- * PAS 24 Certified
- * Made to Measure, to your exact sizes.

** Values are tested for 60mm sash 2003mm x 2183mm, double glazed 24mm argon filled glass unit, "warm edge" spacer and two layers of Low-E coating.

SPECIFICATION & OPTIONS see pages 126 - 135

- * Choice of Door Configurations
- * Glazing options
- * Made to measure sizes
- * Choice of handles
- * Materials & Finishes



ALUMINIUM CLAD TIMBER - CASEMENT 78 WINDOWS & DOORS

ARCHiPROD Aluminium Clad Timber Casement 78 triple glazed windows and doors offer unparalleled performance, excellent quality and durability.



ALUMINIUM CLAD TIMBER - CASEMENT 78 WINDOWS

The stylish design includes perfectly flush joints with no unsightly grooves to give a feeling of traditional elegance, combined with modern day technology - an excellent choice in more contemporary properties as well as traditional homes. The external aluminium profile is lightweight and strong, giving protection against harmful environmental effects whilst also being very low maintenance.



Our Casement 78 windows are perfect for low energy projects. Triple glazed and argon filled windows with 42 mm thickness glass unit, "warm edge" spacer and two layers of Low-E coating achieves a superior U value of 0.9 W/m²K, making this a truly versatile window choice that has great thermal performance. Good acoustic values can also be achieved.

ALUMINIUM CLAD TIMBER PROFILE

78mm profile made of 3 layers of selected wood beam.



ALUMINIUM EXTERIOR



TIMBER INTERIOR



ALUMINIUM CLAD TIMBER - CASEMENT 78 WINDOWS

Aluminium Clad Timber Windows are made to measure and can be made in a choice of configurations to suit your requirements: fixed sash, direct glazed, single sash, multi sash, combination windows. Opening sashes can be side hung or top hung. Different units can be combined to create more complex constructions such as curtain walling, screens, patios, bays and bows, to your exact specifications. Fire escape windows can be configured to match your design, and to comply with Fire Safety Regulations Part B1.

* CASEMENT

Side opening sashes with top opening fanlights

PREMIUM FEATURES & SPECIFICATION

- * High quality energy efficient timber windows
- * Choice of Pine, Oak, Larch and Meranti
- * Aluminium clad exterior
- * Heat transfer coefficient $U=0.9 \text{ W/m}^2\text{K}$ **
- * Outward opening, externally beaded
- * 78 mm profile made of 3 layers of selected wood beam
- * 42 mm triple glazed unit
- * Triple sealing system, provides extremely good heat and sound insulation
- * Long-lasting hardware mechanisms made of stainless steel, coated with zinc and aluminium
- * Multi point locking, high security espagnolette locks
- * Low maintenance aluminium profile
- * Wide choice of colours for varnishes and paints
- * Modern ecological and durable timber, FSC® certificate
- * 4 (600 Pa) air-tightness
- * 5A (200 Pa) water-tightness
- * C3 (1200 Pa) wind load resistance
- * PAS 24 Option
- * Made to Measure, to your exact sizes
 - Sash width: 280mm - 1600mm
 - Sash height: 350mm - 2450mm
 - Direct glazed width: 250mm - 3500mm
 - Direct glazed height: 250mm - 2500mm

** Values are tested for 1230mm x 1480mm single opening window. Triple glazed 42 mm argon filled glass unit, "warm edge" spacer and two layers of Low-E coating.

SPECIFICATION & OPTIONS see pages 126 - 135

- | | |
|---------------------------|------------------------|
| * Choice of Window Styles | * Materials & Finishes |
| * Fire Escape options | * Glazing options |
| * Made to measure sizes | * Choice of handles |



ALUMINIUM CLAD TIMBER - CASEMENT 78 DOORS

Our made to measure Aluminium Clad Timber French and Single Casement doors offer unparalleled performance, excellent quality and durability. Manufactured from engineered, multi-layered timber and fully factory finished. Opening in or out, fully equipped with integrated high security locking and internally beaded to ensure the safety of your home.

The stylish design includes perfectly flush joints with no unsightly grooves to give a feeling of traditional elegance combined with modern day technology - an excellent choice in more contemporary properties as well as traditional homes. Double glazed and argon filled windows with 24mm thickness glass unit, "warm edge" spacer and two layers of Low-E coating achieves a U value of 1.3 W/m²K.

Aluminium Clad Timber Casement Doors can be made in a choice of configurations to suit your requirements: incorporating full height glass or panels, single or double doors with sidelights, or, combination windows. Different units can be combined to create more complex constructions such as curtain walling, screens, patios, to your exact specifications.

* CASEMENT

Side opening sashes

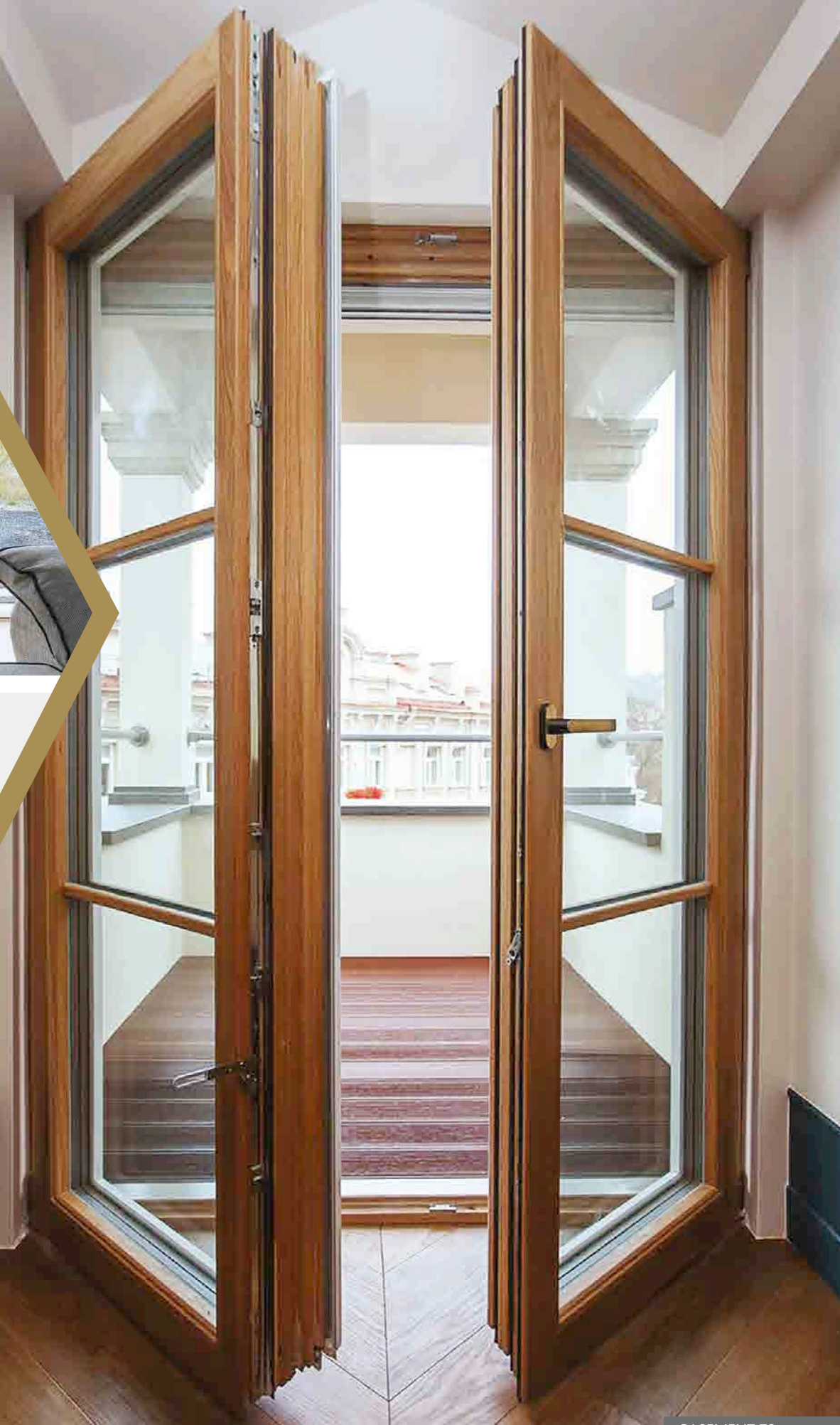
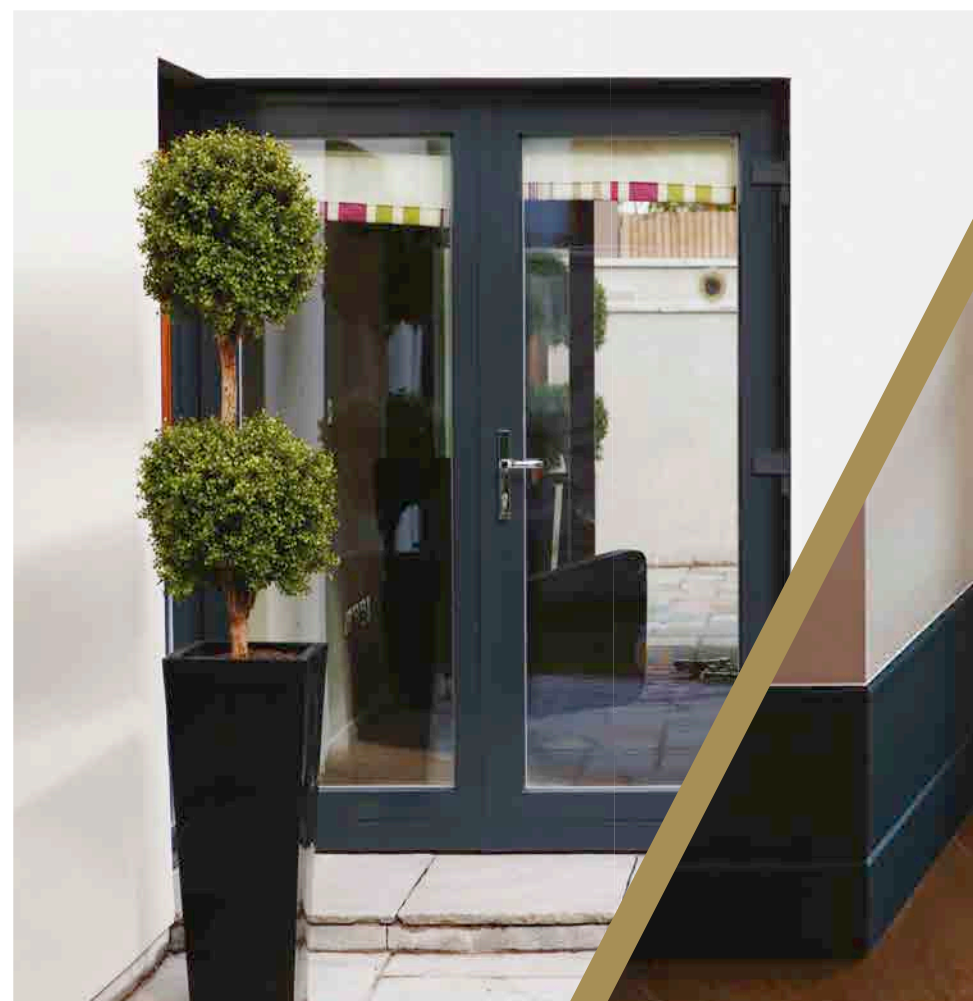
PREMIUM FEATURES & SPECIFICATION

- * High quality energy efficient timber doors
- * Choice of Pine, Oak, Larch and Meranti
- * Aluminium clad exterior
- * Pre-hung, factory fitted door sets
- * Heat transfer coefficient U=1.3 W/m²K **
- * 78mm profile made of 3 layers of exclusive wood beam
- * Outward or inward opening
- * Internally beaded for enhanced security
- * 42 mm triple glazed unit
- * Multi point locking, high security espagnolette locks, latch and mortice deadlock
- * Hardwood cill or low aluminium threshold
- * Wide choice of colours for varnishes and paints
- * Modern ecological and durable timber, FSC® certificate
- * 4 (600 Pa) air-tightness
- * 1A water-tightness
- * C3 (1200 Pa) wind load resistance
- * PAS 24 Certified
- * Made to Measure, to your exact sizes.

** Values are tested for 60mm sash 2003mm x 2183mm, double glazed 24mm argon filled glass unit, "warm edge" spacer and two layers of Low-E coating.

SPECIFICATION & OPTIONS see pages 126 - 135

- * Choice of Door Configurations
- * Glazing options
- * Made to measure sizes
- * Choice of handles
- * Materials & Finishes



TIMBER WINDOWS & DOORS

Our range of contemporary and traditional windows have distinct styles, high value and a naturalness to create a comfortable and warm atmosphere to enhance any property. Timber has high thermal insulation properties compared to other materials and can be specified with either double or triple-glazing.



TIMBER - EURO 78 WINDOWS & SLIDING DOORS

EURO 78 Timber Windows & Sliding Doors are made from a unique 78 mm profile system, internally beaded for improved security and open in for easy cleaning.

With designs available in larger sizes, Euro 78 profiles are suitable for apartments, private houses and commercial buildings.



TIMBER - EURO 78 WINDOWS

TILT & TURN EURO 78 TIMBER WINDOWS are made from a unique 78 mm profile system, internally beaded for improved security and open in for easy cleaning. Multi-point locking and dual weather-stripping satisfy the most demanding construction and architectural standards for security, strength and insulation. A single lever handle controls all window functions. The profile design incorporates moulded curved edges which protects the window from water and dirt, whilst also improving the aesthetic appearance of the window.



Triple glazed and argon filled Euro 78 Timber Window achieves 1.0 W/m²K U value for superior insulation. Good acoustic values can be achieved, suitable for houses close to busy roads or other high noise generating objects. Acoustic performance with double glass unit – 35dB and up to Rw – 48dB with triple glazed unit.

TIMBER PROFILE

78mm profile made of 3 layers of selected wood beam.



EXTERIOR



INTERIOR



TIMBER - EURO 78 WINDOWS

Euro 78 Timber Windows can be made in a choice of configurations to suit your requirements: fixed sash, direct glazed, single sash, multi sash, combination windows. Opening sashes can be specified as opening in, tilt, or tilt & turn. Different units can be combined to create more complex constructions such as curtain walling, screens, patios, bays and bows, to your exact specifications. Fire escape windows can be configured to match your design, and to comply with Fire Safety Regulations Part B1.

* TILT & TURN

A more modern style with larger sections that open inwards

PREMIUM FEATURES & SPECIFICATION

- * High quality energy efficient timber windows
- * Choice of Pine, Oak, Larch and Meranti
- * Heat transfer coefficient $U=1.0 \text{ W/m}^2\text{K}$ **
- * Internally beaded, and inward opening for enhanced security
- * 78mm profile made of 3 layers of selected wood beam
- * Up to 42mm double-glazed or triple-glazed unit
- * Triple sealing system, provides extremely good heat and sound insulation
- * Long-lasting hardware mechanisms made of stainless steel, coated with zinc and aluminium
- * Multi-point locking
- * Dual weather-stripping
- * Effective window protection from condensation
- * Wide choice of colours for varnishes and paints
- * Modern ecological and durable timber, FSC® certificate
- * 4 [600 Pa] air-tightness
- * 9A [600 Pa] water-tightness
- * C5 [2000 Pa] wind load resistance
- * 35 dB acoustic performance with double glazed unit
- * Up to 48 dB acoustic performance with triple glazed unit
- * PAS 24 Certified
- * Made to Measure, to your exact sizes
 - Sash width: 280mm - 1600mm
 - Sash height: 350mm - 2450mm
 - Direct glazed width: 250mm - 3500mm
 - Direct glazed height: 250mm - 2500mm

** Values are tested for 1230mm x 1480mm single opening window. Triple glazed 42mm argon filled glass unit, "warm edge" spacer and two layers of Low-E coating.

SPECIFICATION & OPTIONS see pages 126 - 135

- | | |
|---------------------------|------------------------|
| * Choice of Window Styles | * Materials & Finishes |
| * Fire Escape options | * Glazing options |
| * Made to measure sizes | * Choice of handles |



TIMBER - EURO 78 SLIDING DOORS

Our made to measure Timber Sliding Doors are ideal where large and heavy doors are needed. Elements with large sashes operate easily and smoothly, controlled with one hand. Tilt function allows ventilation of premises without opening the whole door.

Tilt & Slide doors are made using the same profile system as Euro 78 Tilt & Turn inward opening windows. In addition to traditional sideways slide opening it tilts at the top for ventilation.

Timber sliding doors can be made in a choice of configurations to suit your requirements: incorporating full height glass and fixed panels. Different units can be combined to create more complex constructions such as curtain walling, screens, patios, to your exact specifications.

* TILT & SLIDE

A more modern style with larger sections that open inwards

PREMIUM FEATURES & SPECIFICATION

- * High quality energy efficient timber doors
- * Choice of Pine, Oak, Larch and Meranti
- * Pre-hung, factory fitted door sets
- * Heat transfer coefficient $U=1.0 \text{ W/m}^2\text{K}$ **
- * Euro 78mm profile made of 3 layers of exclusive wood beam
- * Tilt and slide opening
- * Internally beaded for enhanced security
- * Up to 42mm double-glazed or triple-glazed unit
- * Multi point locking, high security espagnolette locks, latch and mortice deadlock
- * Hardwood cill or low aluminium threshold
- * Wide choice of colours for varnishes and paints
- * Modern ecological and durable timber, FSC® certificate
- * 4 (600 Pa) air-tightness
- * 3A water-tightness
- * C4 (1600 Pa) wind load resistance
- * 48 dB acoustic performance with triple glazed unit
- * PAS 24 Certified
- * Made to Measure, to your exact sizes.

** Values are tested for 78 mm sash 2191mm x 2244mm, triple glazed 42mm argon filled glass unit, "warm edge" spacer and two layers of Low-E coating.

SPECIFICATION & OPTIONS see pages 126 - 135

- * Choice of Door Configurations
- * Glazing options
- * Made to measure sizes
- * Choice of handles
- * Materials & Finishes



TIMBER - EURO 94 WINDOWS & SLIDING DOORS

EURO 94 TIMBER WINDOWS & DOORS meet A++ energy rating and are suitable for apartments, private houses and commercial buildings. Made from a unique 94 mm profile system, internally beaded for improved security and open in for easy cleaning and maintenance.

The Euro 94 window gives the greatest thermal efficiency, suitable for use in projects that are built to Passive house standard.



TIMBER - EURO 94 WINDOWS

TILT & TURN EURO 94 TIMBER WINDOWS meet A++ energy rating and are suitable for apartments, private houses and commercial buildings. Windows are made from a unique 94 mm profile system, internally beaded for improved security and opening in for easy cleaning. Multi-point locking and dual weather-stripping satisfy the most demanding construction and architectural standards for security, strength and insulation. A single lever handle controls all window functions. The profile design incorporates moulded curved edges which protect the window from water and dirt, whilst improving the aesthetic appearance.



Triple glazed and argon filled Euro 94 Timber Windows with 52 mm thickness glass unit, "warm edge" spacer and two layers of Low-E coating achieves 0.83 W/m²K U value and. Good acoustic values can be achieved, suitable for houses close to busy roads or other high noise generating locations.

TIMBER PROFILE

94mm profile made of 4 layers of selected wood beam.



EXTERIOR

INTERIOR



EURO 94 WITH GLAZING BARS

TIMBER - EURO 94 WINDOWS

Euro 94 Timber Windows can be made in a choice of configurations to suit your requirements: fixed sash, direct glazed, single sash, multi sash, combination windows. Opening sashes can be specified as opening in, tilt, or tilt & turn. Different units can be combined to create more complex constructions such as curtain walling, screens, patios, bays and bows, to your exact specifications. Fire escape windows can be configured to match your design, and to comply with Fire Safety Regulations Part B1.

* TILT & TURN

A more modern style with larger sections that open inwards

PREMIUM FEATURES & SPECIFICATION

- * New generation energy efficient timber windows
- * Choice of Pine, Oak, Larch and Meranti
- * Excellent energy performance - helps to reduce heating costs, suitable for passive houses
- * Heat transfer coefficient $U=0.83 \text{ W/m}^2\text{K}^{**}$
- * Wide 94mm profile made of 4 layers of selected wood beam
- * 52mm insulated triple-glazed units with warm thermal spacers
- * Superior quality selective glass
- * Internally beaded, and inward opening for enhanced security
- * Triple sealing system, provides good heat and sound insulation
- * Long-lasting hardware mechanisms made of stainless steel, coated with zinc and aluminium
- * Multi-point locking
- * Effective window protection from condensation
- * Low maintenance aluminium profile
- * Wide choice of colours for varnishes and paints
- * Modern ecological and durable timber, FSC® certificate
- * 4 (600 Pa) air-tightness
- * 9A (600 Pa) water-tightness
- * C5 (2000 Pa) wind load resistance
- * 48 dB acoustic performance with triple glazed unit
- * PAS 24 Certified
- * Made to Measure, to your exact sizes
 - Sash width: 280mm - 1600mm
 - Sash height: 350mm - 2450mm
 - Direct glazed width: 250mm - 3500mm
 - Direct glazed height: 250mm - 2500mm

** Values are tested for 1230mm x 1480mm single opening window. Triple glazed 42 mm argon filled glass unit, "warm edge" spacer and two layers of Low-E coating.

SPECIFICATION & OPTIONS see pages 126 - 135

- | | |
|---------------------------|------------------------|
| * Choice of Window Styles | * Materials & Finishes |
| * Fire Escape options | * Glazing options |
| * Made to measure sizes | * Choice of handles |



TIMBER - EURO 94 SLIDING DOORS

Our made to measure Timber Sliding Doors are ideal where large and heavy doors are needed. Elements with large sashes operate easily and smoothly, controlled with one hand. Tilt function allows ventilation of premises without opening the whole door.

Tilt & Slide doors are made using the same profile system as Euro 94 Tilt & Turn inward opening windows. In addition to traditional sideways slide opening it tilts at the top for ventilation.

Timber sliding doors can be made in a choice of configurations to suit your requirements: incorporating full height glass and fixed panels. Different units can be combined to create more complex constructions such as curtain walling, screens, patios, to your exact specifications.

* TILT & SLIDE

A more modern style with larger sections that open inwards

PREMIUM FEATURES & SPECIFICATION

- * High quality energy efficient timber doors
- * Choice of Pine, Oak, Larch and Meranti
- * Pre-hung, factory fitted door sets
- * Heat transfer coefficient $U=1.0 \text{ W/m}^2\text{K}$ **
- * Euro 94mm profile made of 4 layers of exclusive wood beam
- * Tilt and slide opening
- * Internally beaded for enhanced security
- * Up to 42mm double-glazed or triple-glazed unit
- * Multi point locking, high security espagnolette locks, latch and mortice deadlock
- * Hardwood cill or low aluminium threshold
- * Wide choice of colours for varnishes and paints
- * Modern ecological and durable timber, FSC® certificate
- * 4 (600 Pa) air-tightness
- * 3A water-tightness
- * C4 (1600 Pa) wind load resistance
- * Up to 48 dB acoustic performance with triple glazed unit
- * PAS 24 Certified option
- * Made to Measure, to your exact sizes.

** Values are tested for 78 mm sash 2191mm x 2244mm, triple glazed 42mm argon filled glass unit, "warm edge" spacer and two layers of Low-E coating.

SPECIFICATION & OPTIONS see pages 126 - 135

- * Choice of Door Configurations
- * Glazing options
- * Made to measure sizes
- * Choice of handles
- * Materials & Finishes



TIMBER - CASEMENT 60 WINDOWS & DOORS

Timber Casement 60 double glazed windows offer unparalleled performance, excellent quality and durability.



TIMBER - CASEMENT 60 WINDOWS

The stylish design includes perfectly flush joints with no unsightly grooves to give a feeling of traditional elegance combined with modern day technology - an excellent choice in more contemporary properties as well as traditional homes.



Double glazed and argon filled windows with 24mm thickness glass unit, "warm edge" spacer and two layers of Low-E coating achieves a U value of 1.3 W/m²K. All casements incorporate modern multi point locking high security espagnolette locks.

TIMBER PROFILE

60mm profile made of 3 layers of selected wood beam.



TIMBER - CASEMENT 60 WINDOWS

Timber windows are made to measure and can be made in a choice of configurations to suit your requirements: fixed sash, direct glazed, single sash, multi sash, combination windows. Opening sashes can be side hung or top hung. Different units can be combined to create more complex constructions such as curtain walling, screens, patios, bays and bows, to your exact specifications. Fire escape windows can be configured to match your design, and to comply with Fire Safety Regulations Part B1.

- * **CASEMENT**
Side opening sashes with top opening fanlights

PREMIUM FEATURES & SPECIFICATION

- * High quality energy efficient timber windows
- * Choice of Pine, Oak, Larch and Meranti
- * Aluminium clad exterior
- * Heat transfer coefficient $U=1.3 \text{ W/m}^2\text{K}$ **
- * Outward opening, externally beaded
- * 60 mm profile made of 3 layers of selected wood beam
- * 24 mm double-glazed unit
- * Triple sealing system, provides extremely good heat and sound insulation
- * Long-lasting hardware mechanisms made of stainless steel, coated with zinc and aluminium
- * Multi point locking, high security espagnolette locks
- * Low maintenance aluminium profile
- * Wide choice of colours for varnishes and paints
- * Modern ecological and durable timber, FSC® certificate
- * 4 (600 Pa) air-tightness
- * 5A (200 Pa) water-tightness
- * C3 (1200 Pa) wind load resistance
- * PAS 24 Option
- * Made to Measure, to your exact sizes
Sash width: 280mm - 1600mm
Sash height: 350mm - 2450mm
Direct glazed width: 250mm - 3500mm
Direct glazed height: 250mm - 2500mm

** Values are tested for 1230mm x 1480mm single opening window. Double glazed 24 mm argon filled glass unit, "warm edge" spacer and two layers of Low-E coating.

SPECIFICATION & OPTIONS see pages 126 - 135

- | | |
|---------------------------|------------------------|
| * Choice of Window Styles | * Materials & Finishes |
| * Fire Escape options | * Glazing options |
| * Made to measure sizes | * Choice of handles |



TIMBER - CASEMENT 60 DOORS

Our made to measure French and Single Casement doors offer unparalleled performance, excellent quality and durability. Manufactured from engineered, multi-layered timber and fully factory finished. Opening in or out, fully equipped with integrated high security locking and internally beaded to ensure the safety of your home.

The stylish design includes perfectly flush joints with no unsightly grooves to give a feeling of traditional elegance combined with modern day technology - an excellent choice in more contemporary properties as well as traditional homes.

Double glazed and argon filled windows with 24mm thickness glass unit, "warm edge" spacer and two layers of Low-E coating achieves a U value of 1.3 W/m²K.

Timber Casement Doors can be made in a choice of configurations to suit your requirements: incorporating full height glass or panels, single or double doors with sidelights, or with combination windows. Different units can be combined to create more complex constructions such as curtain walling, screens, patios, to your exact specifications.

* CASEMENT Side opening

PREMIUM FEATURES & SPECIFICATION

- * High quality energy efficient timber doors
- * Choice of Pine, Oak, Larch and Meranti
- * Pre-hung, factory fitted door sets
- * Heat transfer coefficient $U=1.3 \text{ W/m}^2\text{K}$ **
- * 60mm profile made of 3 layers of exclusive wood beam
- * Outward or inward opening
- * Internally beaded for enhanced security
- * 24 mm double-glazed unit
- * Multi point locking, high security espagnolette locks, latch and mortice deadlock
- * Hardwood cill or low aluminium threshold
- * Wide choice of colours for varnishes and paints
- * Modern ecological and durable timber, FSC® certificate
- * 4 (600 Pa) air-tightness
- * 1A water-tightness
- * C3 (1200 Pa) wind load resistance
- * PAS 24 Certified
- * Made to Measure, to your exact sizes.

** Values are tested for 60mm sash 2003mm x 2183mm, double glazed 24mm argon filled glass unit, "warm edge" spacer and two layers of Low-E coating.

SPECIFICATION & OPTIONS see pages 126 - 135

- * Choice of Door Configurations
- * Glazing options
- * Made to measure sizes
- * Choice of handles
- * Materials & Finishes



TIMBER - CASEMENT 78 WINDOWS & DOORS

Timber Casement 78 triple glazed windows offer unparalleled performance, excellent quality and durability.



TIMBER - CASEMENT 78 WINDOWS

The stylish design includes perfectly flush joints with no unsightly grooves to give a feeling of traditional elegance combined with modern day technology - an excellent choice in more contemporary properties as well as traditional homes.



Our Casement 78 windows are perfect for low energy projects. Triple glazed and argon filled windows with 42 mm thickness glass unit, "warm edge" spacer and two layers of Low-E coating achieves a superior U value of 0.9 W/m²K, making this a truly versatile window choice. Good acoustic values can be achieved, suitable for houses close to busy roads or other high noise generating objects.

TIMBER PROFILE

78mm profile made of 3 layers of selected wood beam.



EXTERIOR



INTERIOR



TIMBER - CASEMENT 78 WINDOWS

Casement 78 Timber Windows are made to measure and can be made in a choice of configurations to suit your requirements: fixed sash, direct glazed, single sash, multi sash, combination windows. Opening sashes can be side hung or top hung. Different units can be combined to create more complex constructions such as curtain walling, screens, patios, bays and bows, to your exact specifications. Fire escape windows can be configured to match your design, and to comply with Fire Safety Regulations Part B1.

PREMIUM FEATURES & SPECIFICATION

- * High quality energy efficient timber windows
- * Choice of Pine, Oak, Larch and Meranti
- * Heat transfer coefficient $U=0.9 \text{ W/m}^2\text{K}$ **
- * Outward opening, externally beaded
- * 78 mm profile made of 3 layers of selected wood beam
- * 42 mm triple glazed unit
- * Triple sealing system, provides extremely good heat and sound insulation
- * Long-lasting hardware mechanisms made of stainless steel, coated with zinc and aluminium
- * Multi point locking, high security espagnolette locks
- * Low maintenance aluminium profile
- * Wide choice of colours for varnishes and paints
- * Modern ecological and durable timber, FSC® certificate
- * 4 (600 Pa) air-tightness
- * 5A (200 Pa) water-tightness
- * C3 (1200 Pa) wind load resistance
- * PAS 24 Option
- * Made to Measure, to your exact sizes
 - Sash width: 280mm - 1600mm
 - Sash height: 350mm - 2450mm
 - Direct glazed width: 250mm - 3500mm
 - Direct glazed height: 250mm - 2500mm

** Values are tested for 1230mm x 1480mm single opening window. Triple glazed 42 mm argon filled glass unit, "warm edge" spacer and two layers of Low-E coating.

SPECIFICATION & OPTIONS see pages 126 - 135

- | | |
|---------------------------|------------------------|
| * Choice of Window Styles | * Materials & Finishes |
| * Fire Escape options | * Glazing options |
| * Made to measure sizes | * Choice of handles |



TIMBER - CASEMENT 78 DOORS

Our made to measure French and Single Casement doors offer unparalleled performance, excellent quality and durability. Manufactured from engineered, multi-layered timber and fully factory finished. Opening in or out, fully equipped with integrated high security locking and internally beaded to ensure the safety of your home.

The stylish design includes perfectly flush joints with no unsightly grooves to give a feeling of traditional elegance combined with modern day technology - an excellent choice in more contemporary properties as well as traditional homes.

Double glazed and argon filled windows with 24mm thickness glass unit, "warm edge" spacer and two layers of Low-E coating achieves a U value of 1.3 W/m²K.

Timber Casement Doors can be made in a choice of configurations to suit your requirements: incorporating full height glass or panels, single or double doors with sidelights or combination windows. Different units can be combined to create more complex constructions such as curtain walling, screens, patios, to your exact specifications.

- * **CASEMENT**
Side opening sashes

PREMIUM FEATURES & SPECIFICATION

- * High quality energy efficient timber doors
- * Choice of Pine, Oak, Larch and Meranti
- * Pre-hung, factory fitted door sets
- * Heat transfer coefficient $U=1.3 \text{ W/m}^2\text{K}$ **
- * 78mm profile made of 3 layers of exclusive wood beam
- * Outward or inward opening
- * Internally beaded for enhanced security
- * 42mm triple glazed unit
- * Multi point locking, high security espagnolette locks, latch and mortice deadlock
- * Hardwood cill or low aluminium threshold
- * Wide choice of colours for varnishes and paints
- * Modern ecological and durable timber, FSC® certificate
- * 4 [600 Pa] air-tightness
- * 1A water-tightness
- * C3 [1200 Pa] wind load resistance
- * PAS 24 Certified
- * Made to Measure, to your exact sizes.

** Values are tested for 60mm sash 2003mm x 2183mm, double glazed 24mm argon filled glass unit, "warm edge" spacer and two

SPECIFICATION & OPTIONS see pages 126 - 135

- * Choice of Door Configurations
- * Glazing options
- * Made to measure sizes
- * Choice of handles
- * Materials & Finishes



A two-story red brick house with a balcony and large bi-fold doors. The house has a gabled roof with white fascia. The balcony is on the first floor, featuring a black metal railing and a set of white-framed bi-fold doors. Below the balcony, on the ground floor, is a larger set of white-framed bi-fold doors. The house is surrounded by a garden with a wooden fence, a swing set, and some plants. The sky is blue with some clouds.

TIMBER - BI-FOLD DOORS

Our Timber Bi-Fold Doors will open up any room to the outside garden space, adding an extra dimension to your living area

TIMBER - BI-FOLD DOORS

Our Timber Bi-Fold Doors will open up any room to the outside garden space, adding an extra dimension to your living area. Bi-fold doors are a top hung exterior folding system designed to accommodate large door sections with precision and ease. Large openings of 2.5m high and 16m wide can be achieved with 8 equal size panels folding seamlessly in each direction with inward or outward opening functionality.

Doors are manufactured from engineered, multi-layered timber and fully factory finished to offer security, insulation, a long life and style to your home. Folding out as standard, fully equipped with integrated high security locking and internally beaded to ensure the safety of your home. Glazing beads and glazing bars are available to match the style of our timber casement windows.

The stylish design includes perfectly flush joints with no unsightly grooves to give a feeling of traditional elegance combined with modern day technology - an excellent choice in more contemporary properties as well as traditional homes.

Double glazed and argon filled doors with 24mm thickness glass unit, "warm edge" spacer and two layers of Low-E coating achieves a U value of 1.3 W/m²K.

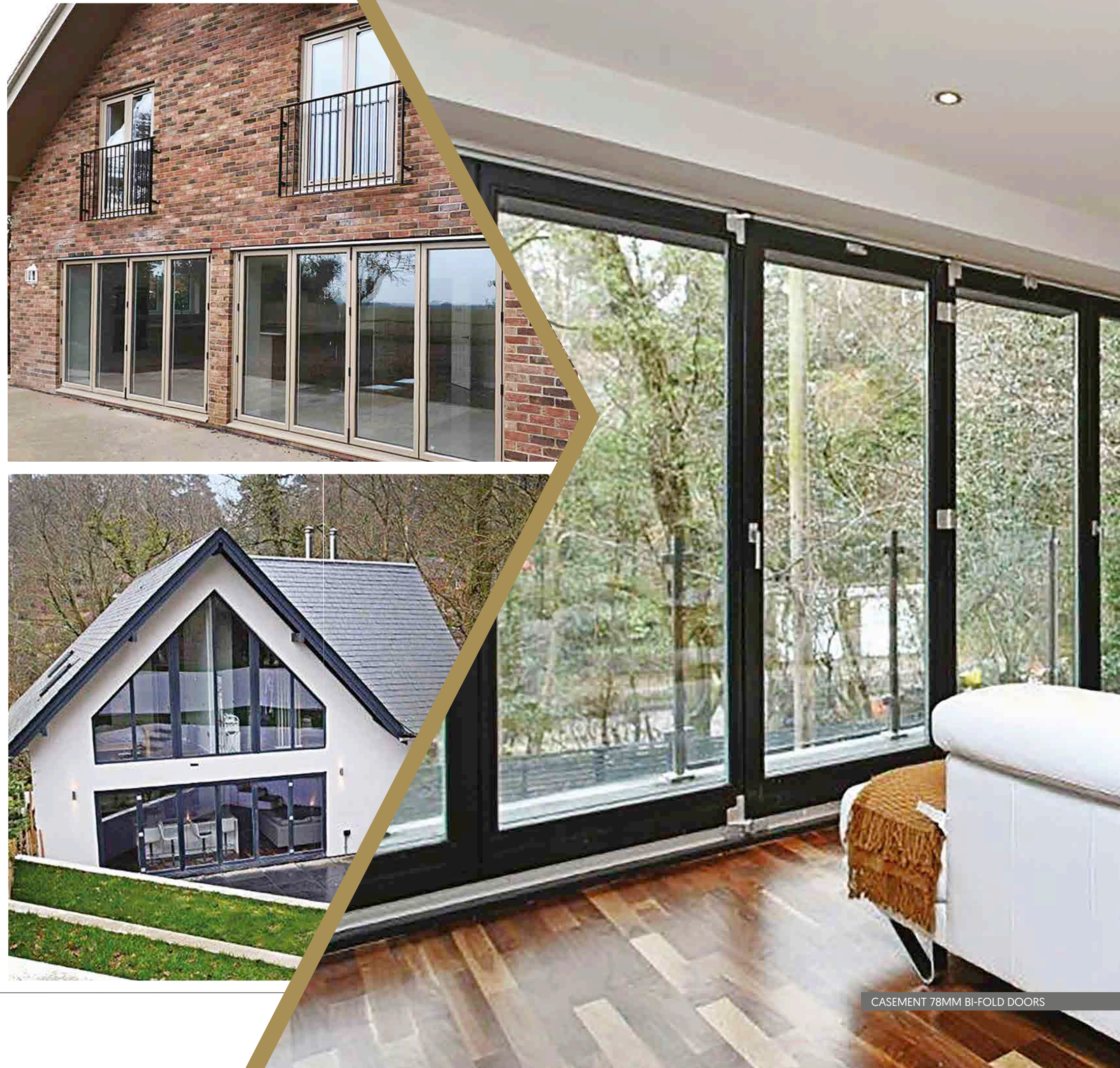
PREMIUM FEATURES & SPECIFICATION

- * High quality energy efficient timber doors
- * Choice of Pine, Oak, Larch and Meranti
- * Pre-hung, factory fitted door sets
- * Heat transfer coefficient $U=1.3 \text{ W/m}^2\text{K}$ **
- * Casement 60mm or 78mm profile made of 3 layers of exclusive wood beam
- * Outward or inward opening
- * Internally beaded for enhanced security
- * 24mm double glazed units or 42mm triple-glazed units
- * Multi point locking, high security espagnolette locks, latch and mortice deadlock
- * Hardwood cill or low aluminium threshold
- * Wide choice of colours for varnishes and paints
- * Modern ecological and durable timber, FSC® certificate
- * 4 (600 Pa) air-tightness
- * 1A water-tightness
- * C2 (1200 Pa) wind load resistance
- * PAS 24 Certified
- * Made to Measure, to your exact sizes.

** Values are tested for 60mm sash 2003mm x 2183mm, double glazed 24mm argon filled glass unit, "warm edge" spacer and two layers of Low-E coating.

SPECIFICATION & OPTIONS see pages 126 - 135

- * Choice of Door Configurations
- * Glazing options
- * Made to measure sizes
- * Choice of handles
- * Materials & Finishes



CASEMENT 78MM BI-FOLD DOORS

TIMBER - SLIDING SASH WINDOWS

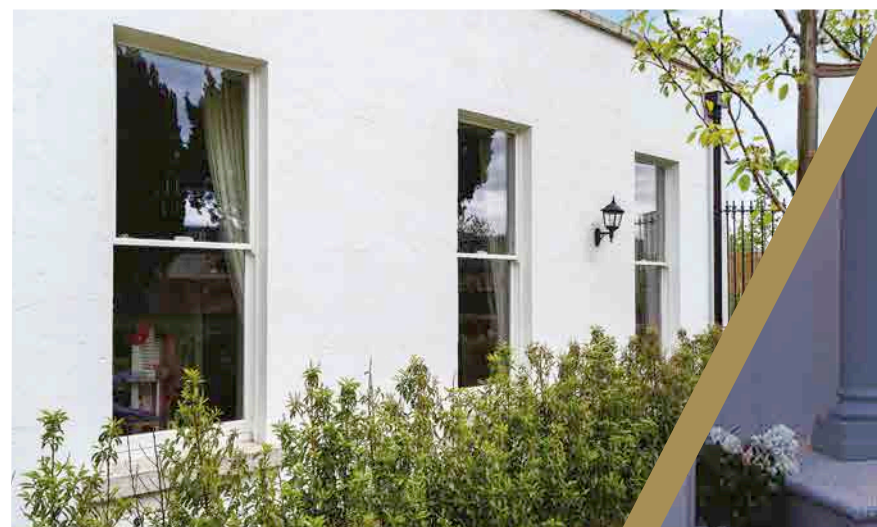
ARCHiPROD's Timber Sash Windows are perfect for projects where architects are looking to create beautiful period properties but also need to meet current building regulations or client's requirements.



TIMBER - SLIDING SASH WINDOWS

ARCHIPROD's modern day version of traditional timber Sash Windows can incorporate either box or spring sashes. These are perfect for projects where architects are looking to create beautiful period properties but also need to meet current Building Regulations, along with the client's requirement.

Box sashes use pre-stretched nylon cords, weights and pulleys to counter balance the sashes in the traditional way suitable for conservation areas and new builds, which capture historical detail while providing modern performance. Spring sashes are a more economical alternative, using a spring loaded mechanism. This allows for a smaller rebate and is often used in new builds where a flush reveal has been detailed by the architect. Sash horns can be incorporated, as an option to add a traditional feel.



TIMBER - SLIDING SASH WINDOWS

Timber Sash Windows are made to order, available in a choice of frame profiles and glazing bars, along with a variety of specifications to ensure that aesthetic, thermal and acoustic requirements are achieved. Internally glazed providing a secure anti-burglar solution and easier maintenance.

Timber Sash Windows are made to measure and can be made in a choice of configurations to suit your requirements. Fire escape windows can be configured to match your design, and to comply with Fire Safety Regulations Part B1.

PREMIUM FEATURES & SPECIFICATION

- * High quality energy efficient timber windows
- * Choice of Pine, Oak, Larch and Meranti
- * Box Sash or Spring Sash operation
- * Sash horn option
- * Heat transfer coefficient $U=1.3 \text{ W/m}^2\text{K}$ ** Spring Sash
- * Heat transfer coefficient $U=1.4 \text{ W/m}^2\text{K}$ ** Box Sash
- * 176mm or 156mm jamb and head profile made of 3 layers of exclusive wood beam
- * 60mm or 50mm sash profile made of 3 layers of selected wood beam
- * 68mm or 65mm height cill profile made of 3 layers of selected wood beam
- * Internally glazed providing a secure anti-burglar solution and easier maintenance
- * Multi point locking, high security espagnolette locks
- * 24mm double-glazed units
- * Wide choice of colours for varnishes and paints
- * Modern ecological and durable timber, FSC® certificate
- * 3 [600 Pa] air-tightness
- * 6A [250 Pa] water-tightness - spring sash
- * 7A [300 Pa] water-tightness - box sash
- * C3 [1200 Pa] wind load resistance
- * PAS 24 Certification (in process)
- * Made to Measure, to your exact sizes.
Sash width: 280mm - 1600mm,
Sash height: 350mm - 2450mm.
Direct glazed width: 250mm - 3500mm,
Direct glazed height: 250mm - 2500mm.

** Values are tested for 1230mm x 1480mm single opening window. Double glazed 24 mm argon filled glass unit, "warm edge" spacer and two layers of Low-E coating.

SPECIFICATION & OPTIONS see pages 126 - 135

- * Choice of Window Styles
- * Fire Escape options
- * Made to measure sizes
- * Materials & Finishes
- * Glazing options
- * Choice of handles



WINDOW STYLES & DOOR CONFIGURATIONS

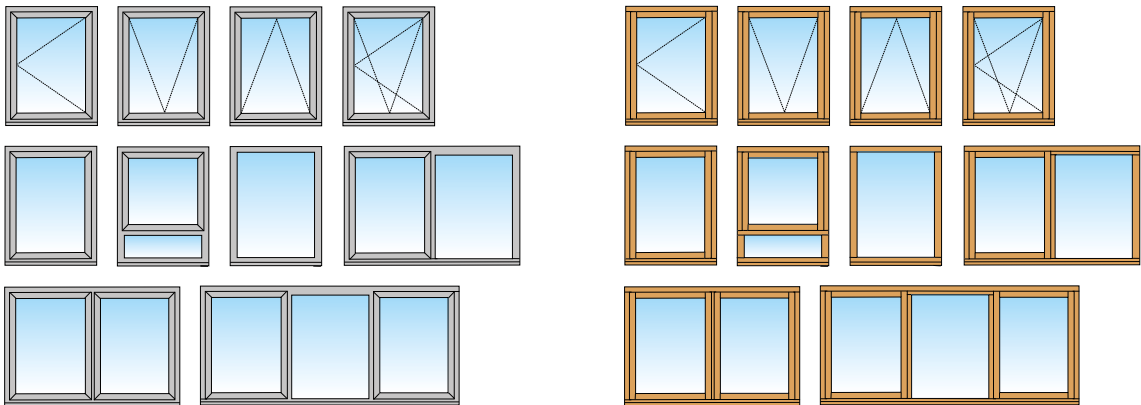
ARCHiPROD's extensive range of bespoke aluminium, aluminium clad timber and timber windows offer a choice of styles to suit every application. With our bespoke service, the possibility is endless. ARCHiPROD windows are made to measure and can be made in a choice of configurations to suit your requirements: fixed sash, direct glazed, single sash fixed sash, multi sash, combination windows. Different units can be combined to create more complex constructions such as curtain walling, screens, patios, bays and bows, to your exact specifications.

Fire escape windows can be configured to match your design, and to comply with Fire Safety Regulations Part B1.

Our range of aluminium, aluminium clad timber and timber doors are made to measure, available in a choice of configurations. Doors can be combined to create complex constructions such as curtain walling, or screens to your exact specifications.

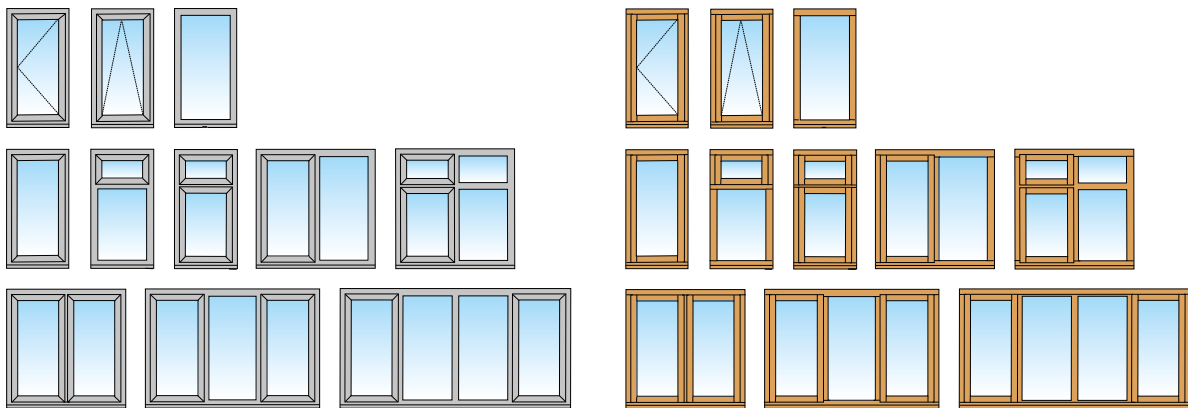
TILT & TURN WINDOWS MASTERLINE 8, CS77, EURO 78, EURO 94

Windows can be made in a choice of configurations to suit your requirements: fixed sash, direct glazed, single sash fixed sash, multi sash, combination windows. Opening sashes can be specified as fixed, opening out or opening in, tilt, or tilt & turn. OPENING INWARD OR OUTWARD.



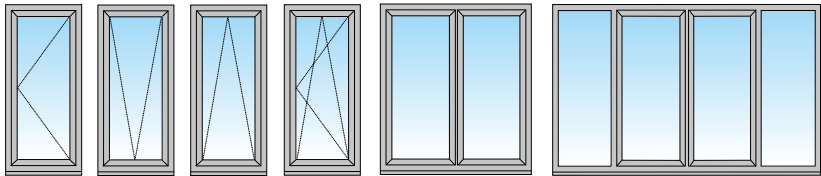
CASEMENT WINDOWS SLIMLINE 38, SLIMLINE 68 , COTO 62, CASEMENT 60, CASEMENT 78

Casement Windows can be made in a choice of configurations to suit your requirements: fixed sash, direct glazed, single sash fixed sash, multi sash, combination windows. Opening sashes can be specified as fixed, side hung or top hung. OPENING OUTWARD.



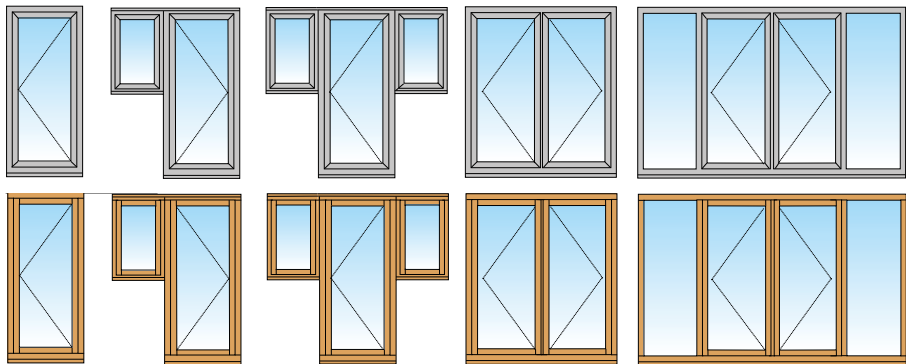
TILT & TURN DOORS MASTERLINE 8

Aluminium Tilt & Turn Doors can be made with single or double opening doors, direct glazed sidelights and combination frames. Doors can be specified as fixed, opening in, tilt, or tilt & turn. OPENING INWARD OR OUTWARD.



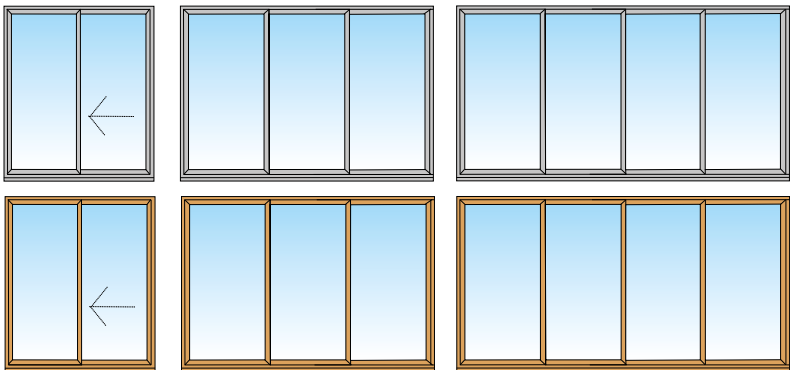
CASEMENT DOORS MASTERLINE 8, CS77, SLIMLINE 38, CASEMENT 60, CASEMENT 78

French Casement Doors can be made in a choice of configurations to suit your requirements: single or double opening door, direct glazed sidelights and combination frames. OPENING OUTWARD.



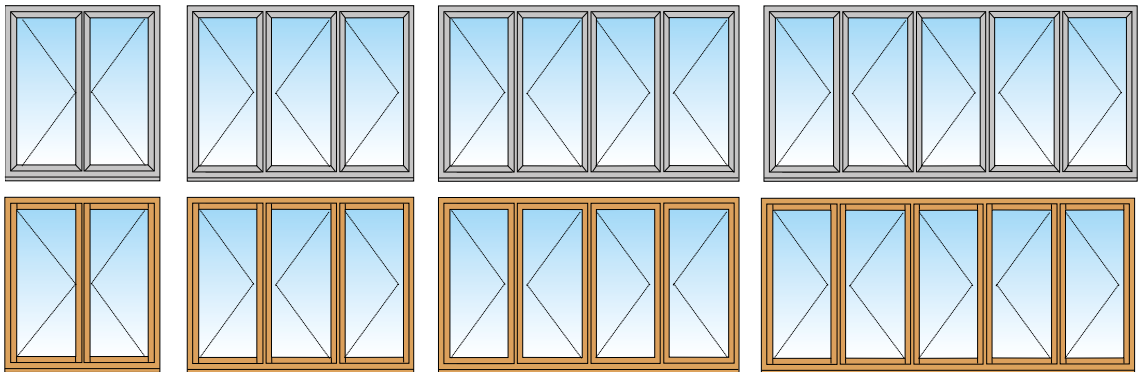
SLIDING DOORS CS77, CP 130, EURO 78, EURO 94

Sliding Doors can be made in a choice of opening configurations to suit your requirements:



BI-FOLD DOORS CF 77, CASEMENT 60, CASEMENT 78

Doors can be designed to fit almost any space, size, or configuration using up to 8 door leaves. Available in maximum sizes up to a very impressive 3m in height for aluminium, 2.5m for timber.



MATERIALS & FINISHES

We offer a choice of woods to create your perfect style. As standard we apply a 20% Satin Lacquer applied to the natural wood. All of our lacquers are environmentally friendly, ecologically clean and harmless to the environment.



WOOD STAINS

We offer a selection of stains which can be applied to Oak windows and doors to enhance the overall effect, whilst still retaining the unique, natural properties of the wood. As standard, a durable 20% Stain Lacquer is applied to stained finishes. We also offer various levels of oiled and polished finishes.



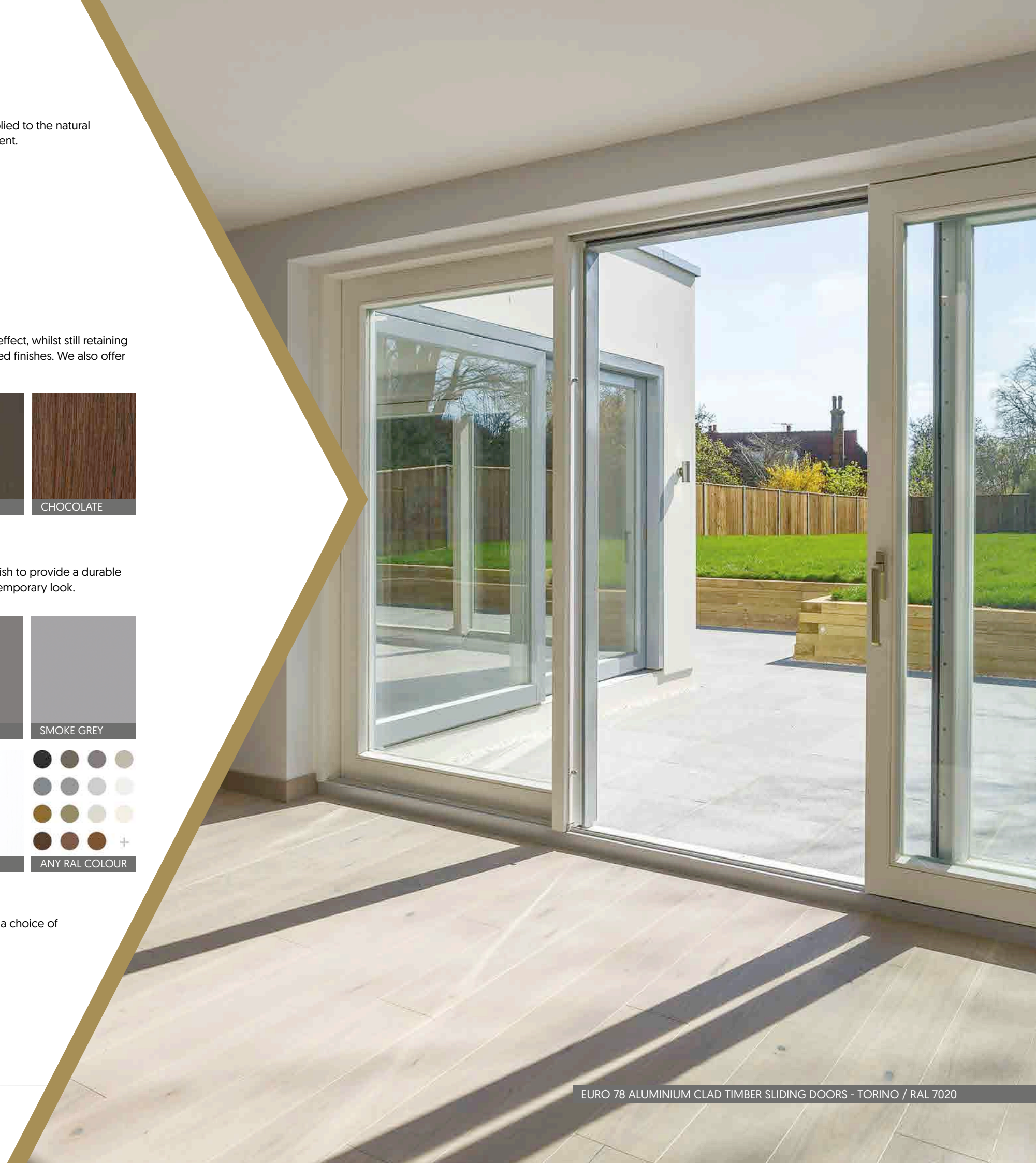
PAINTED FINISHES FOR TIMBER

ARCHiPROD offer a range of painted colours for timber windows and doors, with a 10% satin lacquer finish to provide a durable protective layer to the wood. The natural grain is captured through the wood to create a stunning contemporary look.



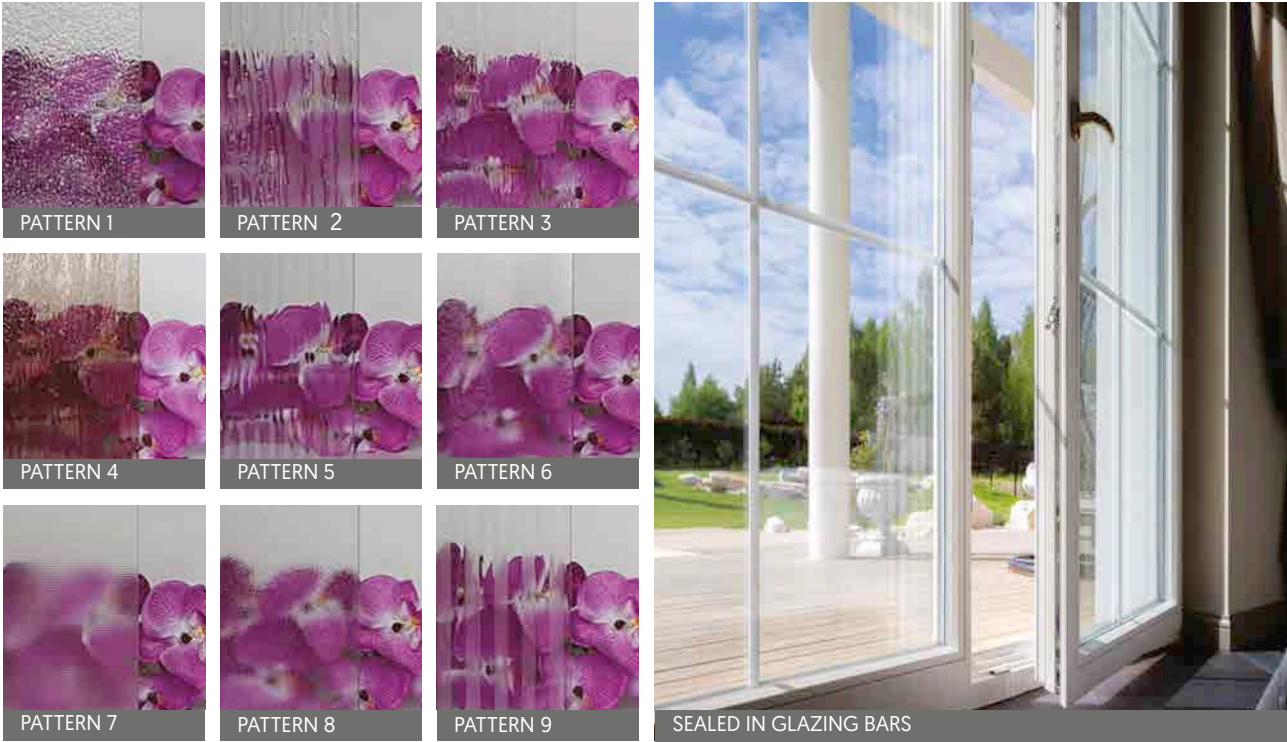
PAINTED FINISHES FOR ALUMINIUM PROFILES

Aluminium windows and doors can be finished in a choice of 9 anodised colours, or powder coated in a choice of RAL colour. As standard, a 20% Satin Lacquer is applied to Aluminium profile systems.



GLASS SPECIFICATION

We offer a choice of double and triple glazed units in various thicknesses, with different performance characteristics - energy saving, solar control, noise reduction, safety and fire resistance. Our glass panels are Clear Safety Toughened Glass (6mm) as standard. Our range of obscure glass patterns will add a good level of privacy for any room.



SEALED IN BARS

We offer a choice of aluminium bars, either cross bar or horizontal bar, sealed inside the glass unit for easy cleaning.

Width: 7.5mm Height: 5.6mm - Gold, Silver
Width: 18mm or 25mm Height: 8mm
White, Brown, White/Brown

FACE FIXED BARS

Face fixed timber bars enhance styling. Internal bars can also be set within the glass unit to add depth to the bar.

Standard: Width 25mm or 32mm. Height 12mm.
Rustic: Width 25mm or 32mm. Height 12mm.
Traditional: Width 25mm. Height 14mm.

THERMAL SPACER BARS

A colour choice of thermo spacers bars can be chosen to match the interior and exterior finishes.



WINDOW VENTS

FOR TIMBER & ALUMINIUM CLAD
TIMBER WINDOWS

We offer a choice of trickle ventilation options, installed in the frame or sash, to comply with building requirements. Glazed-in window ventilators and acoustic vents are also available, in a range of colours.



WINDOW GASKETS

FOR TIMBER & ALUMINIUM CLAD
TIMBER WINDOWS

To blend with your window's colour scheme and ironmongery, a colour choice of gaskets is available in white, brown, or sand.

EXTENSIVE CHOICE OF WINDOW HANDLES

Choosing the correct door handle can not only complement your internal door, it can add the perfect finishing touch to any room and complete your interior design. The choice of timeless designs and high quality will give a feeling of luxury, without compromising on functionality.

HANDLES - FOR ALUMINIUM WINDOWS

Our choice of high quality handles suit various opening applications, with or without cylinder locking. Available in either Stainless Steel, Anodised in a choice of 9 colours, or powder coated in a choice of RAL colours in matt, gloss or coatex surface finish.



HANDLES - FOR ALUMINIUM CLAD TIMBER WINDOWS & TIMBER WINDOWS (EXC. COTO 62)

Our modern handles are elegantly designed in a wide range of colour finishes, with locking options.



HANDLES - FOR ALUMINIUM CLAD TIMBER WINDOWS, (COTO 62 ONLY)

Our modern handles are elegantly designed in a range of colour finishes, with locking options.



ALUMINIUM WINDOW HANDLES SPECIFICATION

Handle	Tilt & Turn, Opening In	Opening In	Opening Out	Stainless Steel	Anodised Colours	Any RAL Colour	Roseless option
Contour	✓			✓			
Touch			✓		✓	✓	✓
Olimpo		✓			✓	✓	✓
Horizon		✓			✓	✓	✓

WINDOW FITTINGS - FOR TIMBER SASH WINDOWS

Our range high quality traditional fittings, is available in a choice of colours. Locking and Non locking Heritage Fitch Fasteners.



EXTENSIVE CHOICE OF DOOR HANDLES

ARCHIPROD offer a choice of high quality handles to suit various opening applications. Carefully chosen handles can add a pleasing finishing touch to your doors, complement any room and add style to your design.

HANDLES - FOR ALUMINIUM DOORS

Timeless designs. Our choice of high quality handles with or without locking options. Available in either Stainless Steel, Anodised in a choice of 9 colours, or powder coated in a choice of RAL colours in matt, gloss or coatex surface finish.



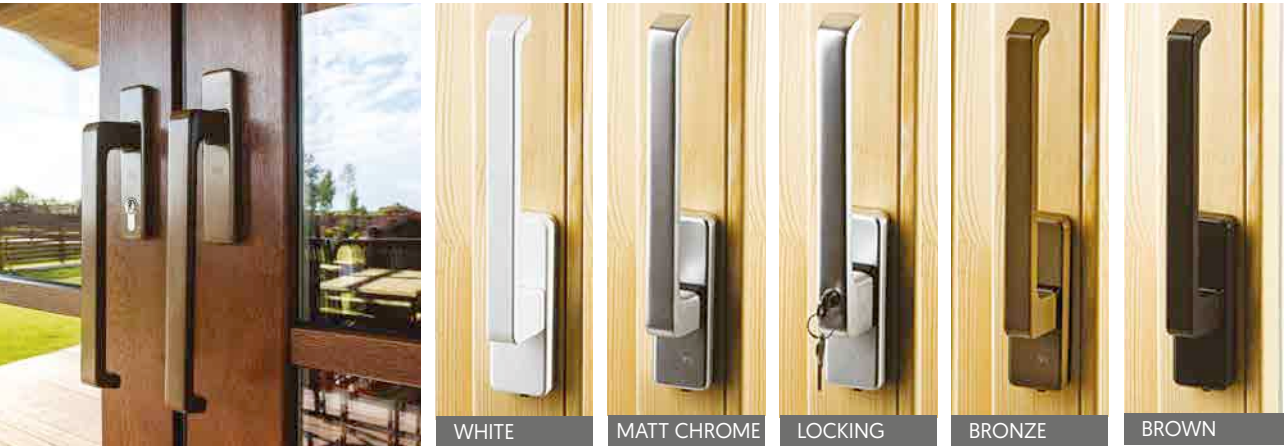
HANDLES - FOR ALUMINIUM SLIDING DOORS

Our modern handles are elegantly designed in a wide range of colour finishes, with locking options. Available in either Stainless Steel, Anodised in a choice of 9 colours, or powder coated in a choice of RAL colours in matt, gloss or coatex surface finish.



HANDLES - FOR TIMBER SLIDING DOORS

Our handles are elegantly designed in a range of colour finishes, with locking options.



ALUMINIUM DOOR HANDLES SPECIFICATION

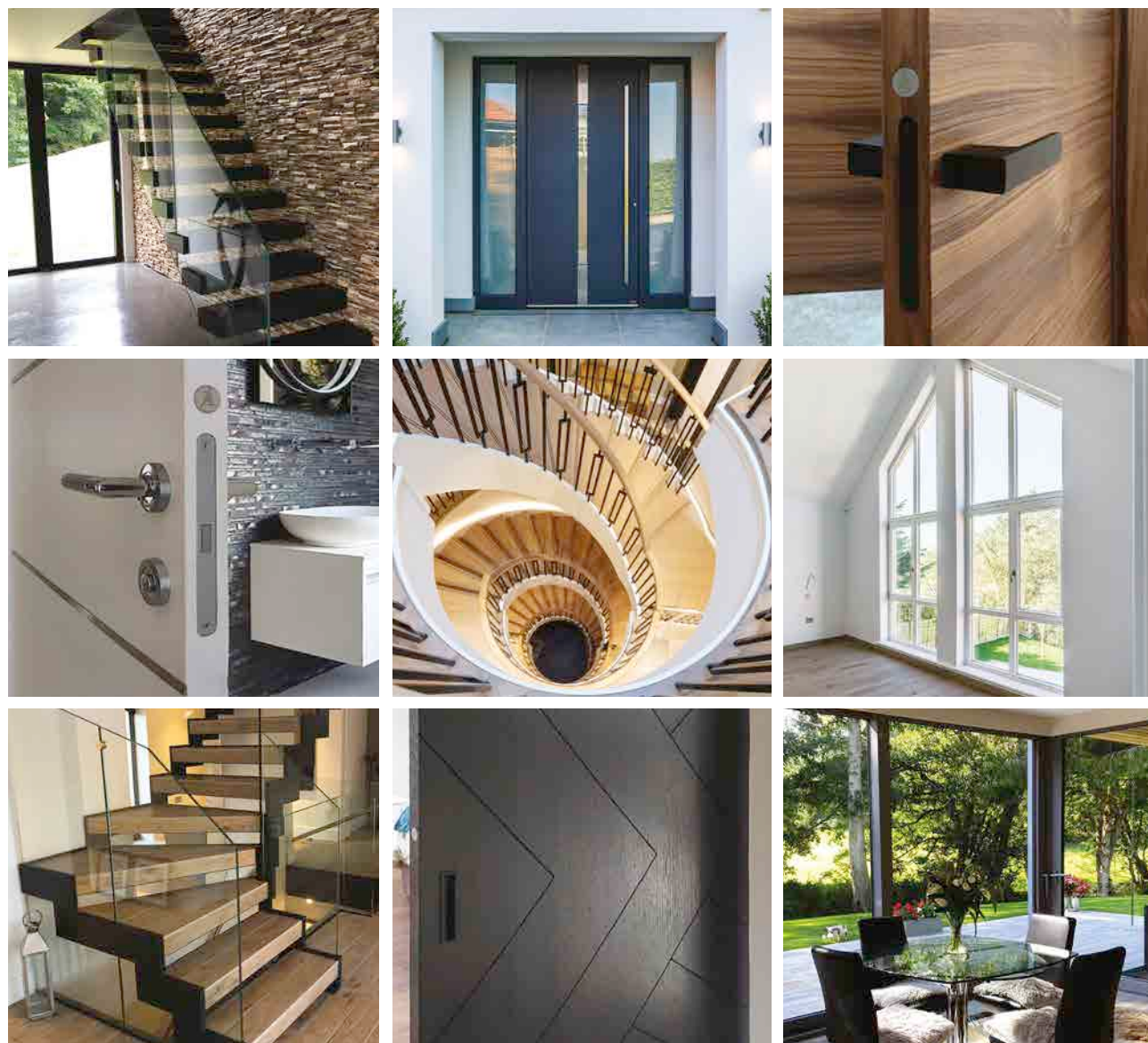
Handle	Tilt & Turn, Opening In	Opening In	Opening Out	Stainless Steel	Anodised Colours	Any RAL Colour
Contour	✓	✓		✓		
Touch			✓		✓	✓
Olimpo		✓			✓	✓
Horizon		✓			✓	✓

HANDLES - FOR TIMBER CASEMENT DOORS

Available in a choice of finishes, Polished Chrome, Polished Brass and Satin Chrome, with locking options.



Creating dynamic spaces



We work closely with customers, interior designers, architects and contractors to provide a fully bespoke service for residential and commercial staircases. With our endless design possibilities we can also offer colour cohesion across our product range.

Our highly experienced project management team provides each of our clients with a highly personal service to suit the specific requirements of design, quality, specification, budget and installation. We can advise and help complement your project, selecting products that will enhance, add value and exude quality.

Our expertise, fast response and enthusiasm are key to delivering products on time. Our production team provides meticulous control over manufacturing, attention to detail and installation. Ultimately, we thrive to deliver unique and exciting design solutions to maximise the success of your project.

INTERNAL STAIRCASES

INTERNAL TIMBER DOOR SETS

FERRO PORTE STEEL & GLASS INTERNAL DOORS

INTERNAL WALL CLADDING

EXTERNAL STAIRCASES

ENTRANCE DOORS

EXTERNAL DOORS

WINDOWS

EXTERNAL WALL CLADDING

