

There is no style
that is beyond our reach.
Think big, dare to dream
and explore all the possibilities
to achieve your perfect look.

From inspiration to installation,
you can expect the highest level
of personal service at every stage
of your ARCHiPROD experience.



ARCHiPROD UAB
Linkmenų g. 5,
Vilnius,
LT-09300
Lithuania

Tel: +370 5 200 2626
Email: info@archiprod.eu
www.archiprod.eu



JUNE 2025



ARCHiPROD®

TIMBER INTERNAL
DOOR SETS

Welcome to ARCHIPROD,

Creating Dynamic Spaces

We specialise in creating quality bespoke solutions for any space, whether its a luxury residential property or the latest commercial development.

ARCHIPROD Door Sets exude quality, beauty and perfection. They are stunning, crafted masterpieces. Each component is engineered with unparalleled precision.

We work closely with customers, interior designers, architects and contractors to provide a personal service. This includes consultation to determine the design, configuration and specification. We make the entire process as simple as possible, offering solutions to challenges presented by complex design issues, building regulations and installation systems.

With our endless design possibilities we also offer colour cohesion, complementing flooring, staircases and interior decor.

Every product can be perfectly tailored to suit your exciting project and to meet your exact requirements. Every detail has its own place and special purpose. The love of perfection is shown in the selection of our high quality materials. Only the best makes the grade.

Bespoke Design Service

Our craftsmanship and variety of options gives customers, builders, architects and designers, the confidence to challenge the parameters of design and individuality. From design to installation, ARCHIPROD will guide you through the process.



CHOOSING YOUR INTERIOR DOORS

Every ARCHIPROD door set is crafted from the highest quality timber, engineered for precision and includes premium features such as concealed hinges, flexible door seals, magnetic door latches which add to the minimal design and prevent slamming.

Choose from single, double, bi-fold, full height (floor to ceiling), sliding and pocket door configurations.

Our bespoke service allows you to personalise our doors to your interior design project and create a unique and stunning impression.

FLUSH PLANA S100 - ESPRESSO, STAINED OAK



TIMBER INTERNAL DOOR SETS

Premium Features	4
FLUSH PLANA	6
FLUSH UNI	12
FLUSH STILE	18
DESIGNO GROOVED	22
DESIGNO INLAID	30
FINESTRATO	38
CLASSIC NOUVEAU	46

OPTIONS

Door Configurations	56
Fire Door Options	57
Acoustic Door Options	57
Pocket Doors	58
Sliding Doors	59
Materials & Finishes	60
Door Handles	64
Architraves	68
Plinth Blocks	68
CNC Cutter Patterns	69
Architrave Door Frame System NFR & FD30	70
Standard Sizes & Structural Openings	71
Made to Measure Size Guide	72
Shadow Gap Door Frame System NFR & FD30	74
Standard Sizes & Structural Openings.....	75
Made to Measure Size Guide	76
Concealed Door Frame System NFR	78
Standard Sizes & Structural Openings	79
Made to Measure Size Guide	80
Concealed Door Frame System FD30	82
Standard Sizes & Structural Openings	83
Made to Measure Size Guide	84
Door Handing	86

ARCHiPROD TIMBER INTERNAL DOOR SETS

Our door sets consist of a door leaf, door frame, architrave and ironmongery. Each door set is pre-hung in the factory for perfect alignment and closure with CNC precision engineering of fittings for high performance operation. Components are then unassembled, packaged and supplied loose for re-assembly after delivery. The finish of the door leaf, lining and architraves are all carefully matched for total cohesion. Our door sets are simple to install, requiring less labour time for fitting and reduced costs than traditional build methods. Shadow Gap Door Frame Systems and Concealed Door Frame Systems are also available to suit your design requirements.



PREMIUM FEATURES

With a host of premium features, our doors will look stunning and enhance any space.



Matching Timbers

FSC approved. The door leaf, lining and architraves are carefully matched for total cohesion.

Magnetic Closing

Flush magnetic latches ensure automatic closure, a secure hold and easy opening.

Soft Closure

Door seals provide a soft closure, prevent draughts and door slamming.

Perfect Alignment

Door fittings are CNC precision drilled and factory fitted for perfect operation and alignment.

Concealed Hinges

For clean lines and a minimalistic look, concealed hinges are hidden within the door return.

Choice of Handles

Choosing the correct door handle can not only complement your internal door, it can add the perfect finishing touch to any room and complete your interior design. Our range of elegant and modern styles, in various finishes, are designed to blend seamlessly with our internal door sets, to create the look you desire.

Why choose an ARCHiPROD Timber Internal Door Set ?

- * Reduced fitting time and cost saving as door leaves and frames are easier and quicker to install than traditional build methods.
- * Late stage fixing - Door frames can be installed late in the build process, meaning that there is less chance of damage by other trades.
- * In addition to the high quality of our woodwork and craftsmanship, the hinges, locks and latches are machine positioned and drilled for total precision and complete alignment. The quality is significantly higher than that achieved by a skilled carpenter using hand tools.
- * The door frame will match the door, not just in colour but the veneer is from the same log, so there is no difference in the colour or grain structure.
- * Bespoke sizes can be manufactured, in addition standard sizes.
- * Matching skirting can be ordered to maintain the same look and feel throughout your project.
- * Fire Doors can be manufactured to match the same design and style as non-fire rated doors.

When taking into consideration the time saved on installing a door frame, architrave and door, in the traditional manner, plus the cost saved in fitting hinges, lock and latches, there is only a slight difference in the total costs, compared to an average quality, traditional door.



FLUSH PLANA

With unsurpassed natural beauty, our FLUSH PLANA range of simple designs will instil striking aesthetics to any room.



FLUSH PLANA P102 - ESPRESSO, STAINED OAK

FLUSH PLANA

The FLUSH PLANA range of interior doors is one of our most popular door styles. The simplistic designs, with various grain direction are both classic and contemporary in style. These door models are ideal for any interior, due to the timeless designs.



FLUSH PLANA P101
White Oak



FLUSH PLANA P102
White Oak



FLUSH PLANA P103
White Oak



FLUSH PLANA P104
White Oak



FLUSH PLANA P100
Smoke Grey

The Flush Plana P100 is a solid MDF door supplied primed or factory painted in any RAL colour.

This is the ideal door to accompany our pocket door system or concealed frame system.

Matching wall cladding and 'floor to ceiling' hidden doors can achieve an uninterrupted harmonious flow to a feature wall, with seamless clean lines for a dramatic effect.



FLUSH PLANA P100 - JET BLACK

PREMIUM FEATURES see page 4
OPTIONS see pages 56 - 87



- * Extensive choice of woods, stains and finishes
- * Choice of door configurations, Pocket Doors, Sliding Doors
- * Architrave, Shadow Gap, Concealed Door Frame Systems
- * Fire rated door options

- * Acoustic door options
- * Standard sizes or made to measure sizes
- * Choice of handles



FLUSH PLANA P102 - WALNUT



FLUSH PLANA P102 - WALNUT



FLUSH PLANA P101 POCKET DOOR - TORINO, ASH



FLUSH PLANA P102 - SLATE, STAINED OAK

FLUSH UNI

Our Flush Uni doors are beautifully understated in design. They are modern flush doors with an intricate pattern of wood grains travelling in various directions.

FLUSH UNI

Our FLUSH UNI range of interior doors are beautifully understated in design. They are modern flush doors with an intricate pattern of wood grains travelling in various directions.



FLUSH UNI U002
Oak



FLUSH UNI U003
Oak



FLUSH UNI U004
Oak



FLUSH UNI U005
Oak



FLUSH UNI U006
Oak



FLUSH UNI U010
Oak



FLUSH UNI U013
Oak



FLUSH UNI U016
Oak

PREMIUM FEATURES see page 4
OPTIONS see pages 56 - 87

- * Extensive choice of woods, stains and finishes
 - * Choice of door configurations, Pocket Doors, Sliding Doors
 - * Architrave, Shadow Gap, Concealed Door Frame Systems
 - * Fire rated door options
- * Acoustic door options
 - * Standard sizes or made to measure sizes
 - * Choice of handles



FLUSH UNI U006 - WHITE OAK



FLUSH UNI U004 - OAK



FLUSH UNI U013 - WALNUT



FLUSH UNI U006 - BIRCH



FLUSH UNI U004 - WALNUT

FLUSH STILE

These classic door styles create a minimal and contemporary design that will compliment your décor. Horizontal and vertical grains emulate traditional rails and/or stiles with book match veneer between them, seamlessly stitched.



FLUSH STILE

These classic door styles create a minimal and contemporary design that will compliment your décor. Horizontal and vertical grains emulate traditional rails and/or stiles with book match veneer between them, seamlessly stitched.



FLUSH STILE S100
White Oak



FLUSH STILE R100
White Oak



FLUSH STILE R101
White Oak



FLUSH STILE S100 - OAK



FLUSH STILE S100 - TEAK

PREMIUM FEATURES see page 4
OPTIONS see pages 56 - 87

- * Extensive choice of woods, stains and finishes
- * Choice of door configurations, Pocket Doors, Sliding Doors
- * Architrave, Shadow Gap, Concealed Door Frame Systems
- * Fire rated door options

- * Acoustic door options
- * Standard sizes or made to measure sizes
- * Choice of handles



FLUSH STILE S100 - ESPRESSO, STAINED OAK

DESIGNO GROOVED

The DESIGNO GROOVED range of interior doors features modern designs CNC machined into the surface of the door, either 3mm 'U' shaped or 5mm 'V' shaped.



DESIGNO GROOVED

The DESIGNO GROOVED range of interior doors features modern designs CNC machined into the surface of the door, either 3mm 'U' shaped or 5mm 'V' shaped.



DESIGNO GROOVED G100
White Oak



DESIGNO GROOVED G101
White Oak



DESIGNO GROOVED G102
White Oak



DESIGNO GROOVED G103
White Oak



DESIGNO GROOVED G104
White Oak



DESIGNO GROOVED G105
White Oak



DESIGNO GROOVED G106
White Oak



DESIGNO GROOVED G107
White Oak

PREMIUM FEATURES see page 4
OPTIONS see pages 56 - 87



- * Extensive choice of woods, stains and finishes
- * Choice of door configurations, Pocket Doors, Sliding Doors
- * Architrave, Shadow Gap, Concealed Door Frame Systems

- * Fire rated door options, acoustic options
- * Standard sizes or made to measure sizes
- * Choice of handles



DESIGNO GROOVED [continued]

The DESIGNO GROOVED range of interior doors features modern designs CNC machined into the surface of the door, either 3mm 'U' shaped or 5mm 'V' shaped.



DESIGNO GROOVED G108
White Oak



DESIGNO GROOVED G109
White Oak



DESIGNO GROOVED G110
White Oak



DESIGNO GROOVED G111
White Oak



DESIGNO GROOVED G112
White Oak

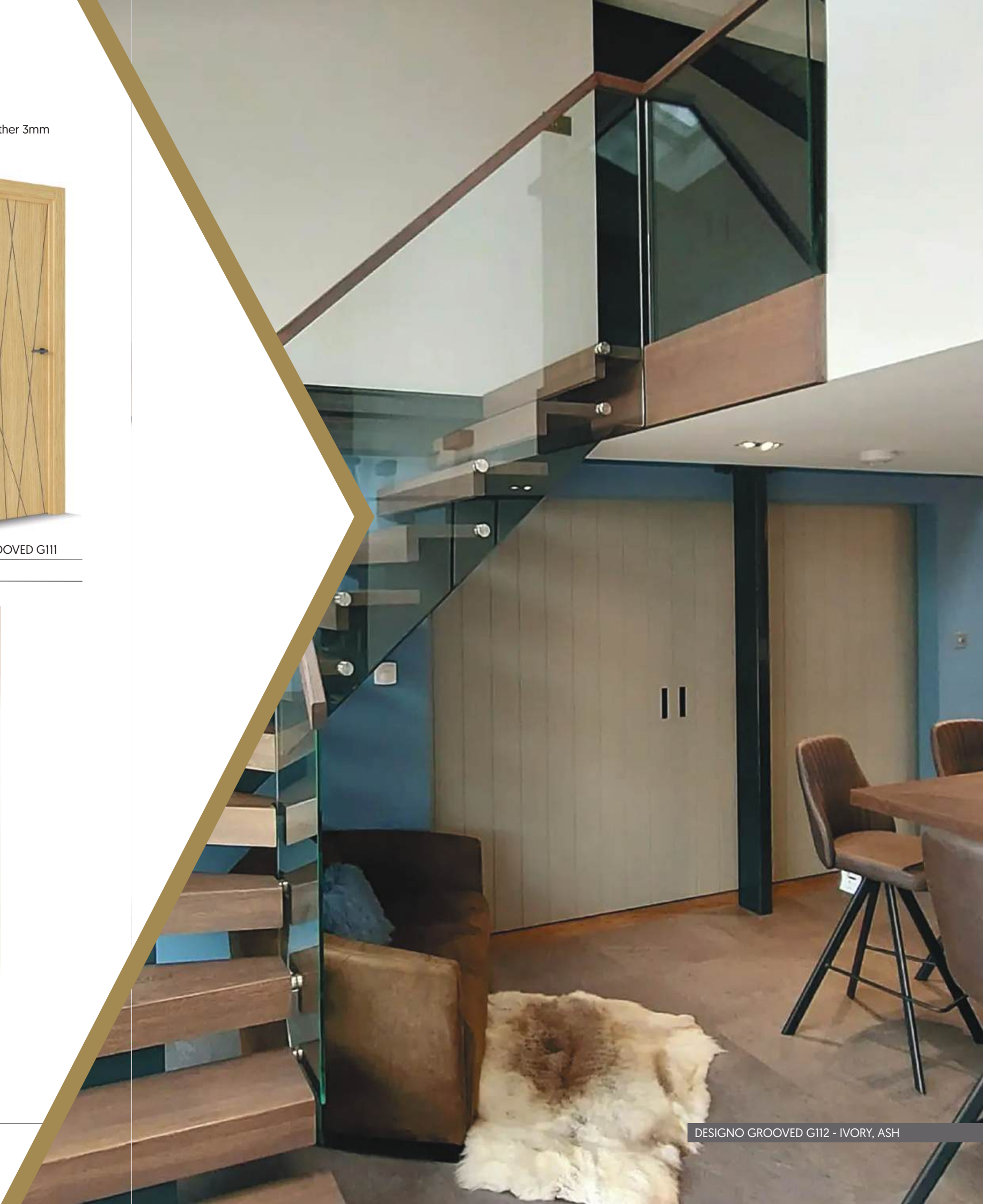


DESIGNO GROOVED G111 - CHOCOLATE, STAINED OAK

PREMIUM FEATURES see page 4
OPTIONS see pages 56 - 87



- * Extensive choice of woods, stains and finishes
- * Choice of door configurations, Pocket Doors, Sliding Doors
- * Architrave, Shadow Gap, Concealed Door Frame Systems
- * Fire rated door options
- * Acoustic door options
- * Standard sizes or made to measure sizes
- * Choice of handles



DESIGNO GROOVED G112 - IVORY, ASH



DESIGNO GROOVED G101 - TORINO, ASH



DESIGNO GROOVED G102 - TORINO, ASH



DESIGNO GROOVED G101 - OAK



DESIGNO GROOVED G100 - STAINED WALNUT

DESIGNO INLAID

Our DESIGNO INLAID range has been co-ordinated to inspire your designs with a contemporary feel and a wide range of inlays in any style, colour and finish.

DESIGNO INLAID

Our DESIGNO INLAID range has been co-ordinated to inspire your designs with a contemporary feel and a wide range of inlays and outlays in any style, colour and finish. Inlays to IN103 will stand proud of the door surface.



DESIGNO INLAID IN100
Stained Walnut - Brass Inlay



DESIGNO INLAID IN101
Stained Walnut - Brass Inlay



DESIGNO INLAID IN102
Stained Walnut - Brass Inlay



DESIGNO INLAID IN103
Stained Walnut - Brass Inlay



DESIGNO INLAID IN104
Stained Walnut - Brass Inlay



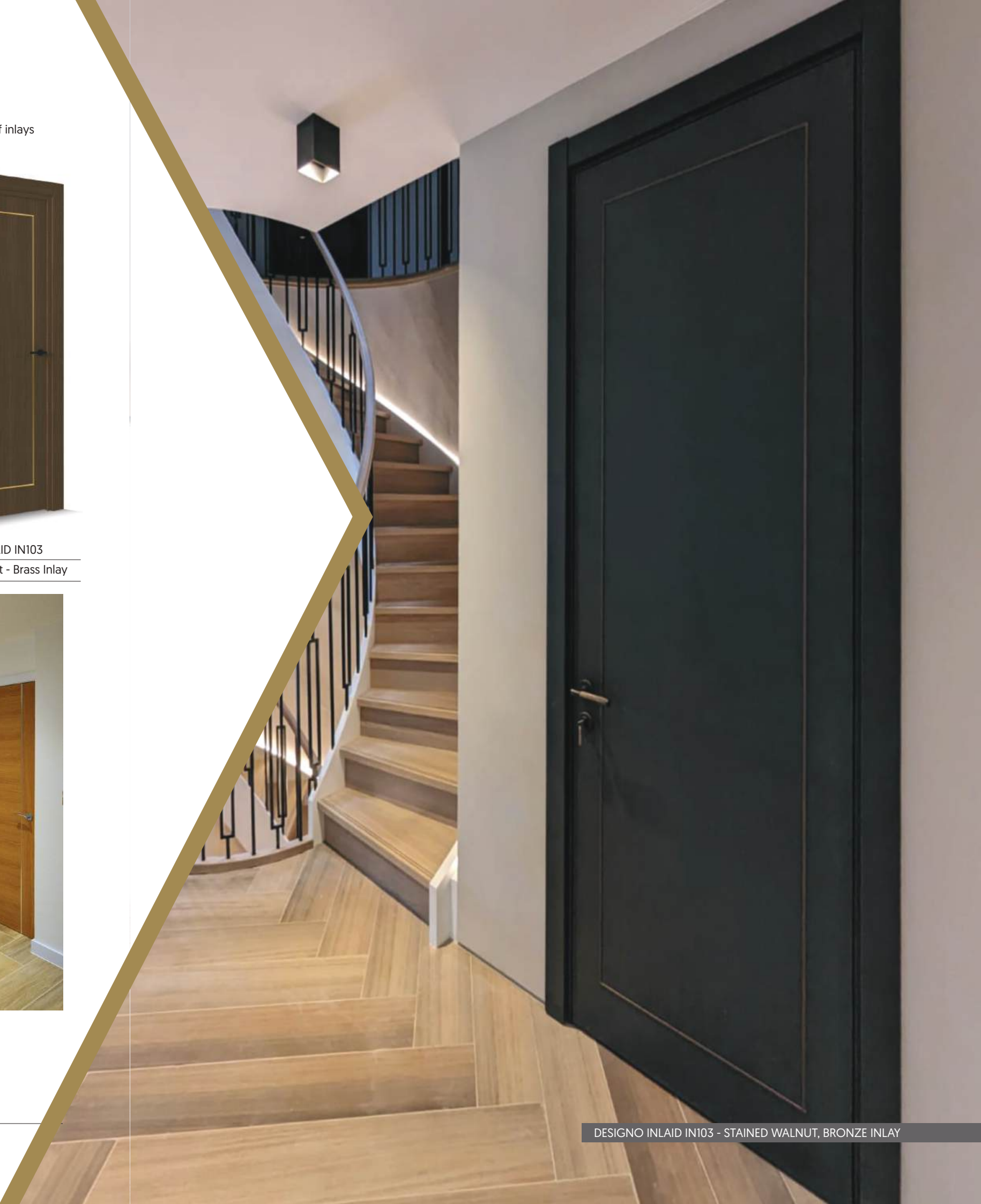
DESIGNO INLAID IN101 - STAINED OAK, STAINLESS STEEL INLAY

PREMIUM FEATURES see page 4
OPTIONS see pages 56 - 87



- * Extensive choice of woods, stains and finishes
- * Choice of door configurations, Pocket Doors, Sliding Doors
- * Architrave, Shadow Gap, Concealed Door Frame Systems
- * Fire rated door options

- * Acoustic door options
- * Standard sizes or made to measure sizes
- * Choice of inlays and outlays
- * Choice of handles



DESIGNO INLAID IN103 - STAINED WALNUT, BRONZE INLAY

DESIGNO INLAID

Our DESIGNO INLAID range has been co-ordinated to inspire your designs with a contemporary feel and a wide range of inlays and outlays in any style, colour and finish. Inlays to IN105 and IN108 will stand proud of the door surface.



DESIGNO INLAID IN105
Stained Walnut - Brass Inlay



DESIGNO INLAID IN106
Stained Walnut - Brass Inlay



DESIGNO INLAID IN107
Stained Walnut - Brass Inlay



DESIGNO INLAID IN108
Stained Walnut - Brass Inlay



DESIGNO INLAID IN110
Stained Walnut - Brass Inlay



DESIGNO INLAID IN105 - NERO, ASH, BRASS INLAY

PREMIUM FEATURES see page 4
OPTIONS see pages 56 - 87



- * Extensive choice of woods, stains and finishes
- * Choice of door configurations, Pocket Doors, Sliding Doors
- * Architrave, Shadow Gap, Concealed Door Frame Systems
- * Fire rated door options

- * Acoustic door options
- * Standard sizes or made to measure sizes
- * Choice of inlays and outlays
- * Choice of handles



DESIGNO INLAID IN110 - JET BLACK WITH ANTHRACITE INLAY



DESIGNO INLAID IN103 - STAINED OAK, JET BLACK INLAY



DESIGNO INLAID IN101 - ESPRESSO, STAINED OAK, BRASS INLAY



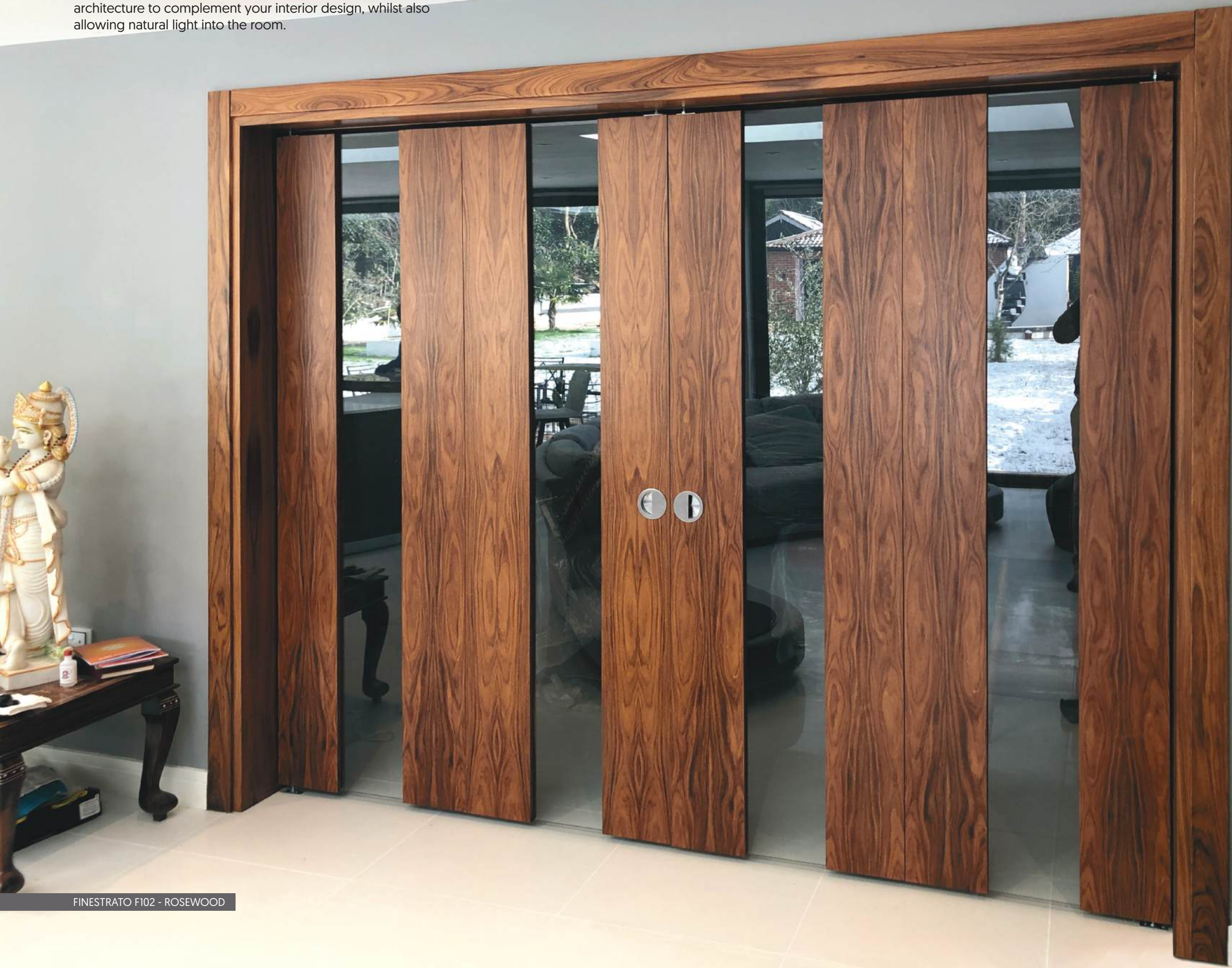
DESIGNO INLAID IN100 - OAK, STEEL INLAY



DESIGNO INLAID IN103 - TORINO, ASH, JET BLACK STEEL INLAY

FINESTRATO - GLASS & MIRROR

These stunning designs can create a feature piece of modern architecture to complement your interior design, whilst also allowing natural light into the room.



FINESTRATO - GLASS & MIRROR

The Finestrato Glass & Mirror Interior Door range offers modern designs or doors with frameless glass doors, traditional beading and framed styles. Choice of wood veneers, stain and painted finishes, and glass patterns.



FINESTRATO F101
White Oak / Clear Glass



FINESTRATO F102
White Oak / Clear Glass



FINESTRATO F103
White Oak / Clear Glass



FINESTRATO F104
White Oak / Clear Glass



FINESTRATO F105
White Oak / Clear Glass



FINESTRATO F106
White Oak / Clear Glass



F103 - SLATE GREY, OAK

PREMIUM FEATURES see page 4
OPTIONS see pages 56 - 87



- * Extensive choice of woods, stains and finishes
- * Choice of door configurations, Pocket Doors, Sliding Doors
- * Architrave, Shadow Gap, Concealed Door Frame Systems
- * Fire rated door options

- * Acoustic door options
- * Standard sizes or made to measure sizes
- * Choice of glass patterns
- * Choice of handles



FINESTRATO F102 - TEAK

FINISTRATO - GLASS & MIRROR (continued)

The Finestrato Glass & Mirror Interior Door range offers modern designs or doors with frameless glass doors, traditional beading and framed styles. Choice of wood veneers, stain and painted finishes, and glass patterns.



FINISTRATO F107
MDF / Jet Black / Clear Glass



FINISTRATO F108
MDF / Jet Black / Clear Glass



FINISTRATO F109
MDF / Jet Black / Clear Glass



FINISTRATO F110
MDF / Jet Black / Clear Glass



FINISTRATO F111
White Oak / Clear Glass



FINISTRATO F112
White Oak / Clear Glass



FINISTRATO F113
White Oak / Clear Glass



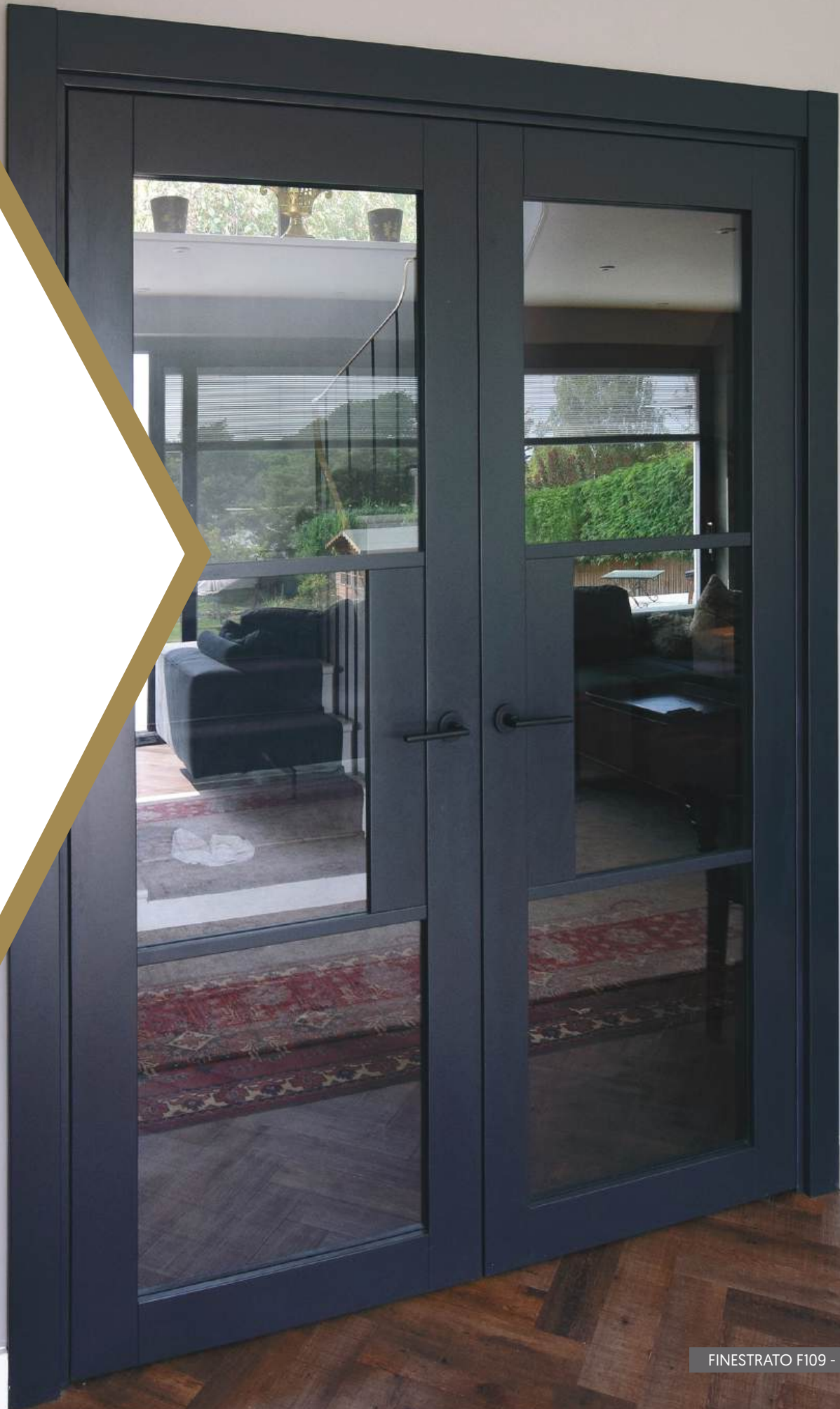
FINISTRATO F114
White Oak / Clear Glass

PREMIUM FEATURES see page 4
OPTIONS see pages 56 - 87

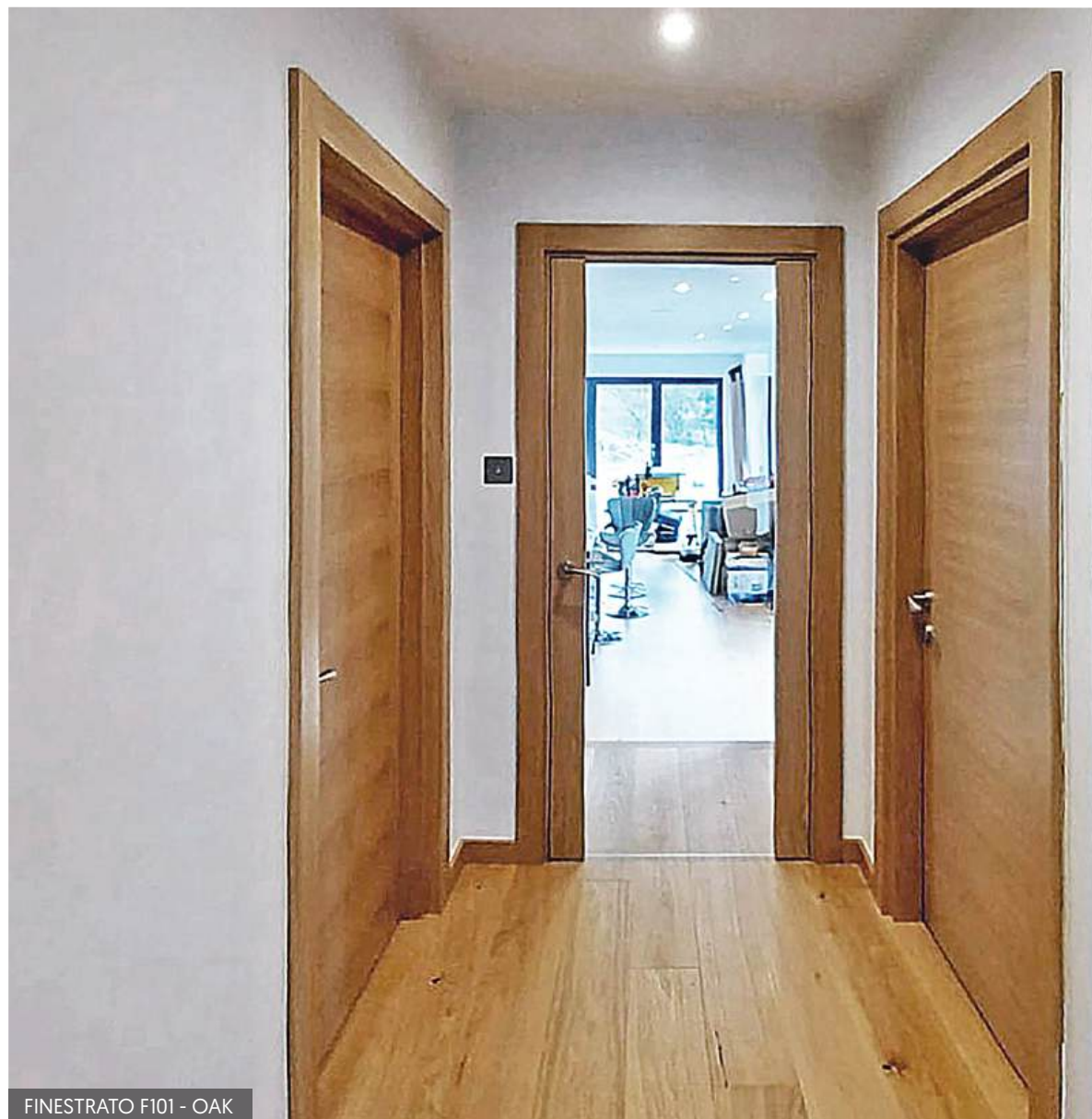


- * Extensive choice of woods, stains and finishes
- * Choice of door configurations, Pocket Doors, Sliding Doors
- * Architrave, Shadow Gap, Concealed Door Frame Systems
- * Fire rated door options

- * Acoustic door options
- * Standard sizes or made to measure sizes
- * Choice of glass patterns
- * Choice of handles



FINISTRATO F109 - RAL 7021



FINISTRATO F101 - OAK



FINISTRATO F105 - NERO, ASH



FINISTRATO F103 - ESPRESSO, STAINED OAK



FINISTRATO F102 - TEAK

CLASSIC NOUVEAU

Our CLASSIC NOUVEAU range of internal door sets are modern designs, characteristically flush painted doors, precision machined using CNC technology to cut and emulate panel designs.

For a modern contemporary feel, doors can be veneered which can give a striking contrast against where the cutter cuts through.

A range of CNC cutter patterns can be applied to the panel style, from stepped profiles to ovolo, straight and chamfer detailing, to create beautiful and stunning effects.

CLASSIC NOUVEAU

Our CLASSIC NOUVEAU range of internal door sets are modern designs, characteristically flush painted doors, precision machined using CNC technology to cut and emulate panel designs.



CLASSIC NOUVEAU C010
MDF / Dove Grey / APC03



CLASSIC NOUVEAU C020
MDF / Dove Grey / APC03



CLASSIC NOUVEAU C021
MDF / Dove Grey / APC03



CLASSIC NOUVEAU C022
MDF / Dove Grey / APC03



CLASSIC NOUVEAU C023
MDF / Dove Grey / APC03



CLASSIC NOUVEAU C024
MDF / Dove Grey / APC03



CLASSIC NOUVEAU C030
MDF / Dove Grey / APC03



CLASSIC NOUVEAU C031
MDF / Dove Grey / APC03

PREMIUM FEATURES see page 4
OPTIONS see pages 56 - 87



- * Extensive choice of painted finishes
- * Choice of door configurations, Pocket Doors, Sliding Doors
- * Architrave, Shadow Gap, Concealed Door Frame Systems
- * Fire rated door options
- * Acoustic door options
- * Standard sizes or made to measure sizes
- * Choice of CNC cutter designs
- * Choice of handles



CLASSIC NOUVEAU C021 - SMOKE GREY

CLASSIC NOUVEAU [continued]

For a modern contemporary feel, our CLASSIC NOUVEAU range of internal door sets doors can be veneered to give a striking contrast against where the cutter cuts through.



CLASSIC NOUVEAU C032
MDF / Dove Grey / APC03



CLASSIC NOUVEAU C033
MDF / Dove Grey / APC03



CLASSIC NOUVEAU C034
MDF / Dove Grey / APC03



CLASSIC NOUVEAU C040
MDF / Dove Grey / APC03



CLASSIC NOUVEAU C041
MDF / Dove Grey / APC03



CLASSIC NOUVEAU C042
MDF / Dove Grey / APC03



CLASSIC NOUVEAU C050
MDF / Dove Grey / APC03



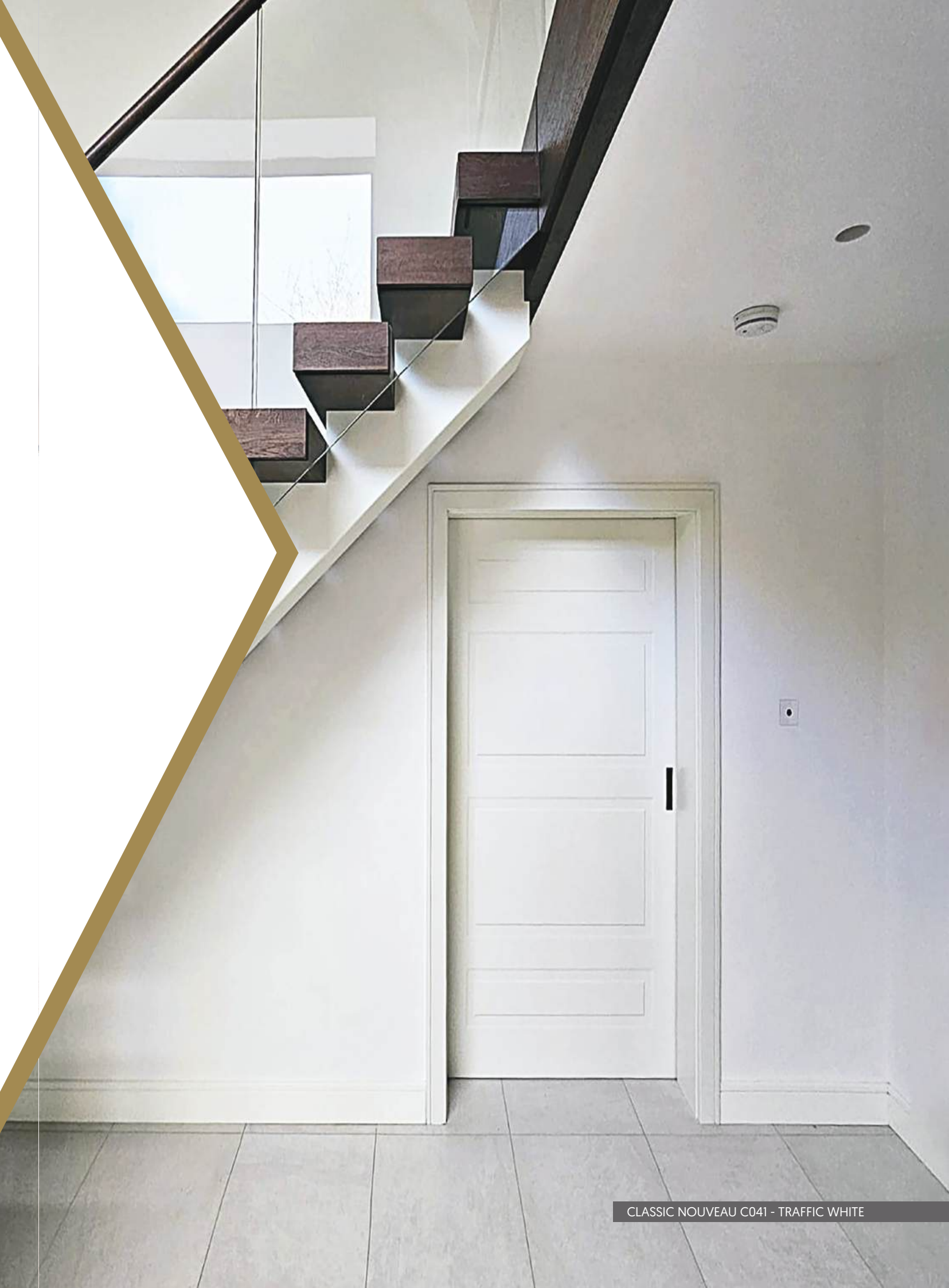
CLASSIC NOUVEAU C060
MDF / Dove Grey / APC03

PREMIUM FEATURES see page 4
OPTIONS see pages 56 - 87



- * Extensive choice of painted finishes
- * Choice of door configurations, Pocket Doors, Sliding Doors
- * Architrave, Shadow Gap, Concealed Door Frame Systems
- * Fire rated door options

- * Acoustic door options
- * Standard sizes or made to measure sizes
- * Choice of CNC cutter designs
- * Choice of handles



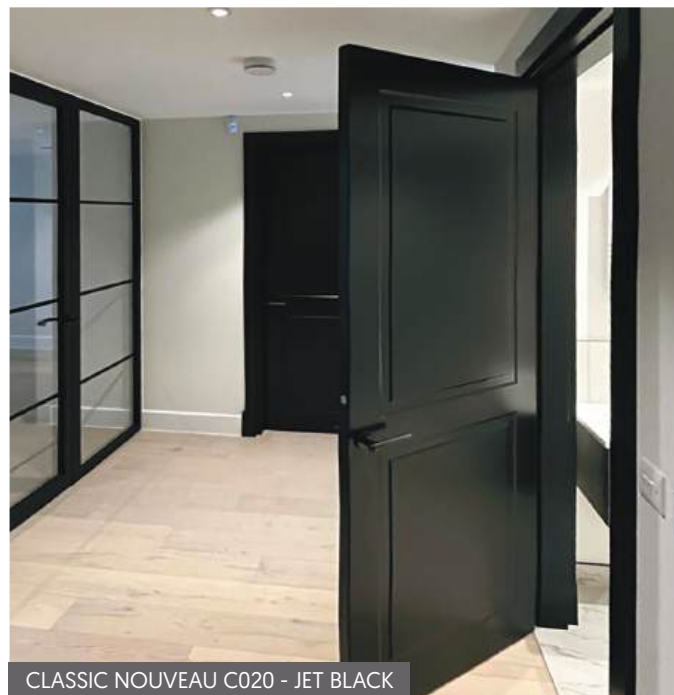
CLASSIC NOUVEAU C041 - TRAFFIC WHITE



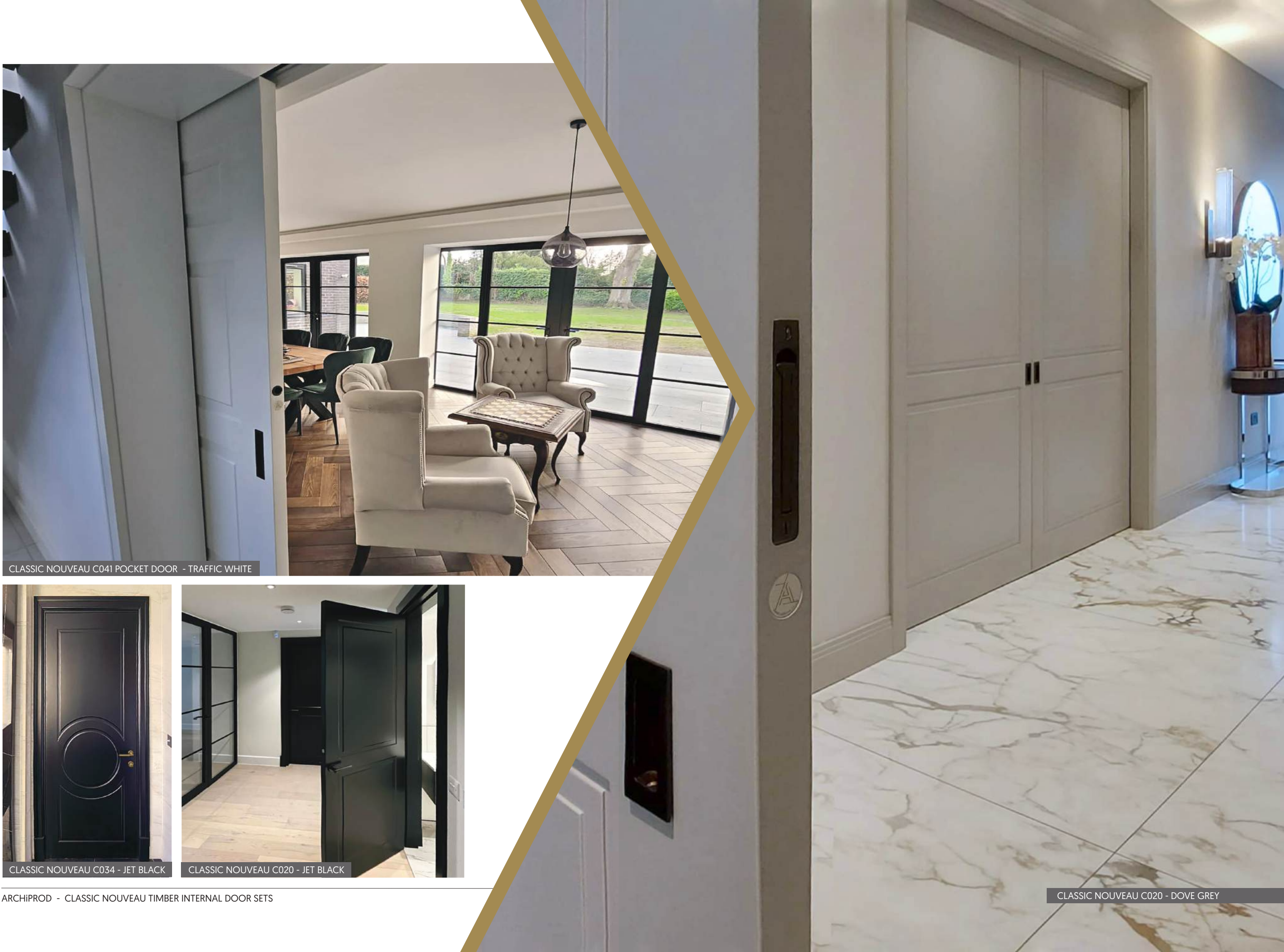
CLASSIC NOUVEAU C041 POCKET DOOR - TRAFFIC WHITE



CLASSIC NOUVEAU C034 - JET BLACK



CLASSIC NOUVEAU C020 - JET BLACK



CLASSIC NOUVEAU C020 - DOVE GREY

Choosing your Internal Doors

Every ARCHiPROD door set is made to order and crafted from the highest quality timber, engineered for precision and includes premium features such as concealed hinges, flexible door seals, magnetic door latches which add to the minimal design and prevent slamming.

Our door sets consist of a door leaf, door frame, architrave and ironmongery. Each door set is pre-hung in the factory for perfect alignment and closure with CNC precision engineering of fittings for high performance operation. Components are then unassembled, packaged and supplied loose for re-assembly after delivery. The finish of the door leaf, lining and architraves are all carefully matched for total cohesion. Our door sets are simple to install, requiring less labour time for fitting and reduced costs than traditional build methods. Shadow Gap Door Frame Systems and Concealed Door Frame Systems are also available to suit your design requirements.

Choose from single, double, bi-fold, full height (floor to ceiling), sliding and pocket door configurations. Our bespoke service allows you to personalise our doors to your interior design project and create a unique and stunning impression.

With a host of premium features, and an extensive choice of options, our internal door sets will look stunning and enhance any room.



DOOR CONFIGURATIONS

ARCHiPROD's extensive range of bespoke internal doors can be made to suit any configuration or application.



SINGLE DOOR SETS
Our single hinged doors are pre-hung in the factory for perfect alignment and closure with CNC precision engineering.



DOUBLE DOOR SETS
Double door sets have rebated leading edges, with pre-installed shoot-bolts, as standard.



DOOR SETS WITH SIDELIGHTS
Sidelights increase the flow of natural light around the home. A practical solution for greater vision to open up any interior.



POCKET DOORS
Our Pocket Doors create privacy or acoustic screens, or open up rooms without taking up space [see page 58].



SLIDING DOORS
Our Sliding Door Sets come in a variety of styles and systems that can enhance the aesthetics of any room [see page 59].



BI-FOLD DOORS
Bi-Fold Doors create a stylish open plan living space that can be divided into smaller rooms when needed.



TELESCOPIC DOORS
This system can operate with 2, 3 or 4 door variants with doors neatly stacked to the side.



PIVOT DOORS
The mechanism is fully integrated into the door, a feature for any home or office.



FLOOR TO CEILING DOORS
An uninterrupted harmonious flow with seamless clean lines.

FIRE RATED DOORS

ARCHiPROD Internal Door Sets can be manufactured with FD30 or FD60 cores and Fire Rated Glass (7mm). Door leaf thickness for Fire Rated Doors are 45mm for FD30, 52mm for FD60.

Smoke seals, thresholds and intumescent strips can also be installed within the door where necessary. If you require a self-closer for FD30S and FD60S, our concealed hinges can be upgraded to a hidden self-closing mechanism within the frame and door, with no visible difference to our standard concealed hinges.

ACOUSTIC DOORS

As an option, ARCHiPROD Internal Door Sets can be manufactured with an acoustic rating of 40dB to reduce sound transmission.



FINISTRATO F102 - TEAK

POCKET DOORS

Our Pocket Doors can help maximise space, create privacy or provide acoustic screens when needed. Complementary to our single hinged door sets, our Pocket Doors can be made in any door style and is a perfect solution for many purposes, whether for a commercial office, boutique hotel or luxury home.

- * Single, Double and Telescopic Doors
- * Standard Sizes & Made to Measure Sizes
- * Aluminium track / Hardwood frame
- * Architrave / Shadow Gap / Concealed Frame System
- * Fire Rated Door option (FD30)
- * Acoustic Door option
- * Self-closing and Touch Latch options
- * Choice of flush handles



ARCHITRAVE FRAME SYSTEM - CLASSIC NOUVEAU CO21



CONCEALED FRAME SYSTEM - FLUSH PLANA P101



ARCHITRAVE FRAME SYSTEM - CLASSIC NOUVEAU CO21



CONCEALED FRAME - FLUSH PLANA P103



CONCEALED FRAME - FLUSH UNI U004



BARN STYLE SLIDING DOORS - DESIGNO GROOVED G111

SLIDING DOOR SYSTEMS

Our Interior Door Sets are available with a variety of sliding systems that can suit the aesthetics of any room. Suitable for residential or commercial applications such as offices, meeting rooms or hotels.

A Sliding Door is different to a Pocket Door, in that the door bypasses in front of the wall rather than entering between a gap (pocket) in a wall. They are a good option where pocket doors may not be suitable, as they can fit over existing walls and spaces. Ideal if you wish to create a room separator, such as between a kitchen and living area. The doors are fixed to a track which allows the 'left to right' movement to occur. This means that these doors are perfect for saving space, ideal for small rooms such as bathrooms.

CONCEALED FRAME SLIDING DOORS

Our Concealed Frame Sliding Door creates the illusion that the door is floating, you can never see the track that the door glides on because it is always hidden behind the door. The door runs on wheels at the bottom to create a smooth and consistent movement. Please note the bottom rollers need to run on a solid floor, if carpet is present then a running strip must be used.

- * Door widths 800 - 1800mm, maximum door weight 80kg, minimum door thickness 30mm
- * Suitable for a wide variety of door widths and thickness
- * High quality smooth running systems
- * Top track can be recessed into the door for a wall to door clearance of 12 - 22mm or face fixed with a clearance of 32mm for skirting boards

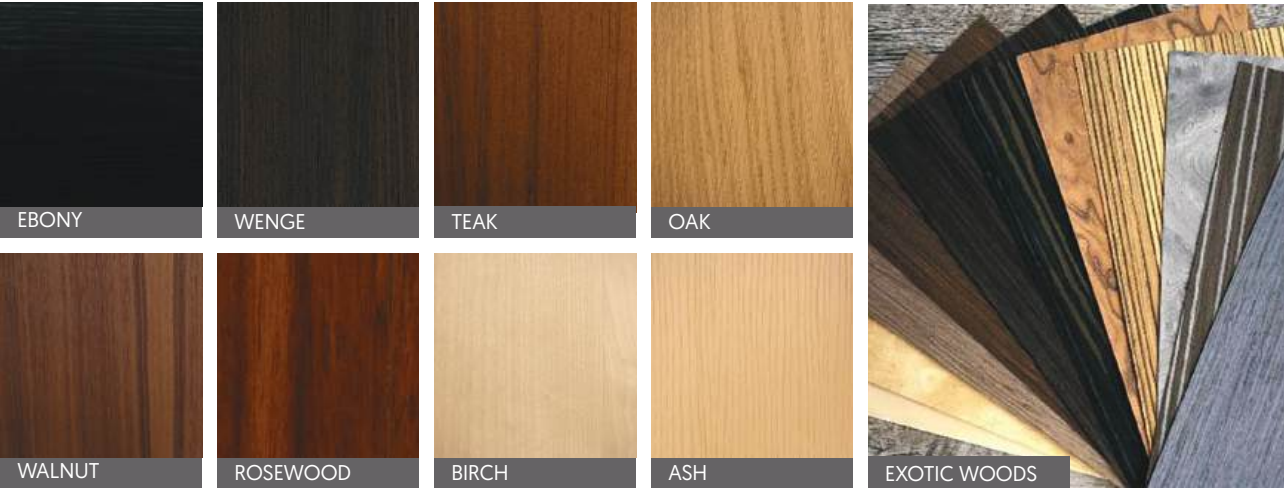
BARN STYLE SLIDING DOORS

Our Barn Style Sliding Doors incorporate beautifully steel crafted hangers and wheels for doors running on a wall mounted exposed visible track. Ideal for barn conversions, period properties or simply for a unique feature in the home.

- * Single or Double Sliding Doors
- * Available in 2000mm or 3000mm track lengths
- * Door weights up to 100kg
- * Two finishes available - Matt Black and Stainless Steel
- * Available as standard, single, or double soft stop
- * Soft Close option

MATERIALS & FINISHES

We offer an extensive choice of wood veneers to match your design requirements and create your perfect style, from our standard range, or from our exotic range of woods. Veneers can be specified as quarter sawn or crown cut. As standard, a gloss level of 20% Satin is applied to natural wood veneers. We also offer a 10% matt finish or a 60% gloss finish. We also offer various levels of oiled finishes for a more natural look. All of our lacquers are environmentally friendly, ecologically clean and harmless to the environment.



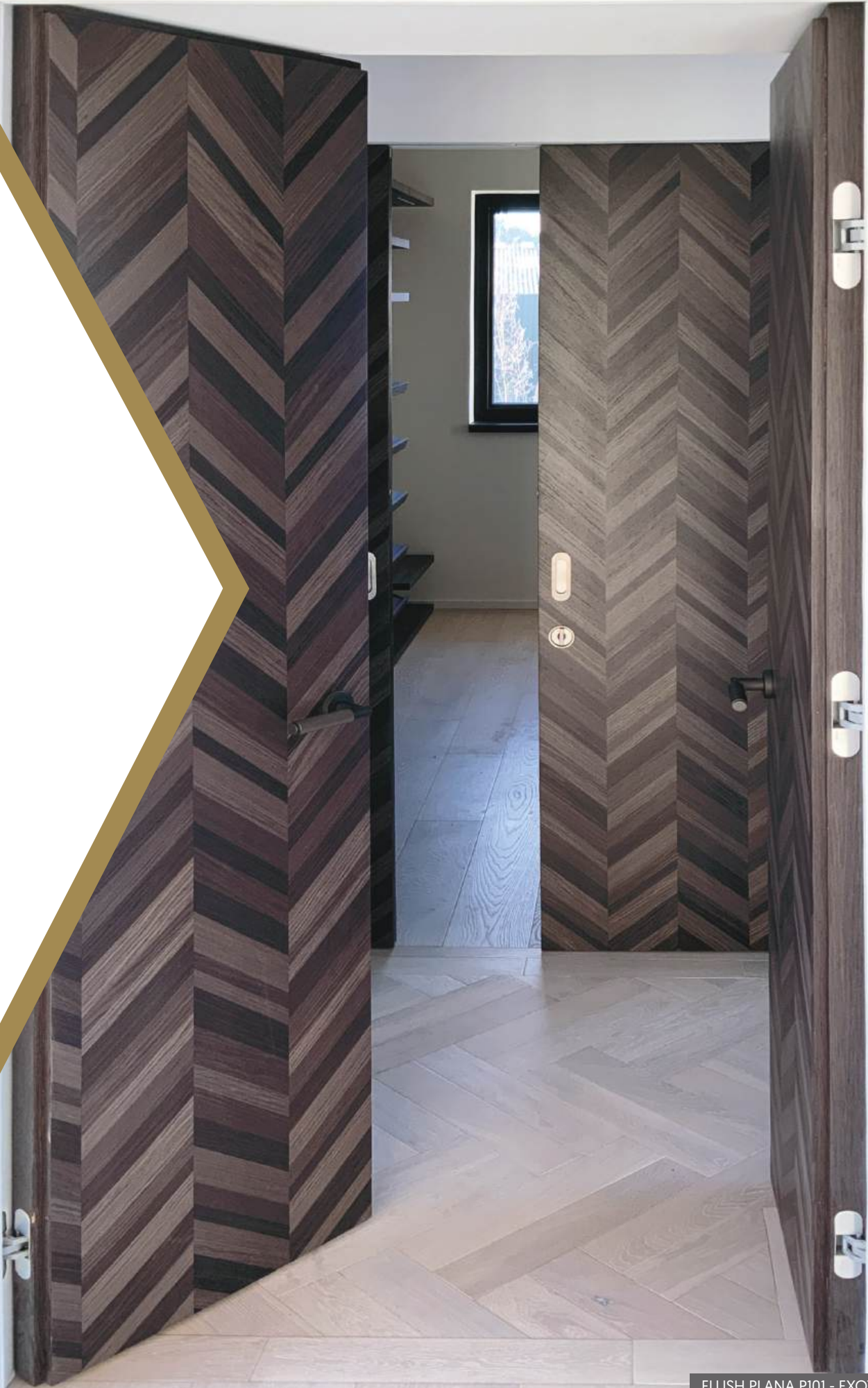
WOOD STAINS

We offer an extensive selection of stains which can be applied to Oak and Walnut doors to enhance the overall effect and provide a durable finish, whilst still retaining the unique, natural properties of the wood. As standard, a 20% Gloss Lacquer is applied to stained finishes. Gloss lacquer can also be applied at 60%, 80% and 100% levels for durable higher gloss finishes. We also offer various levels of oiled and polished finishes.



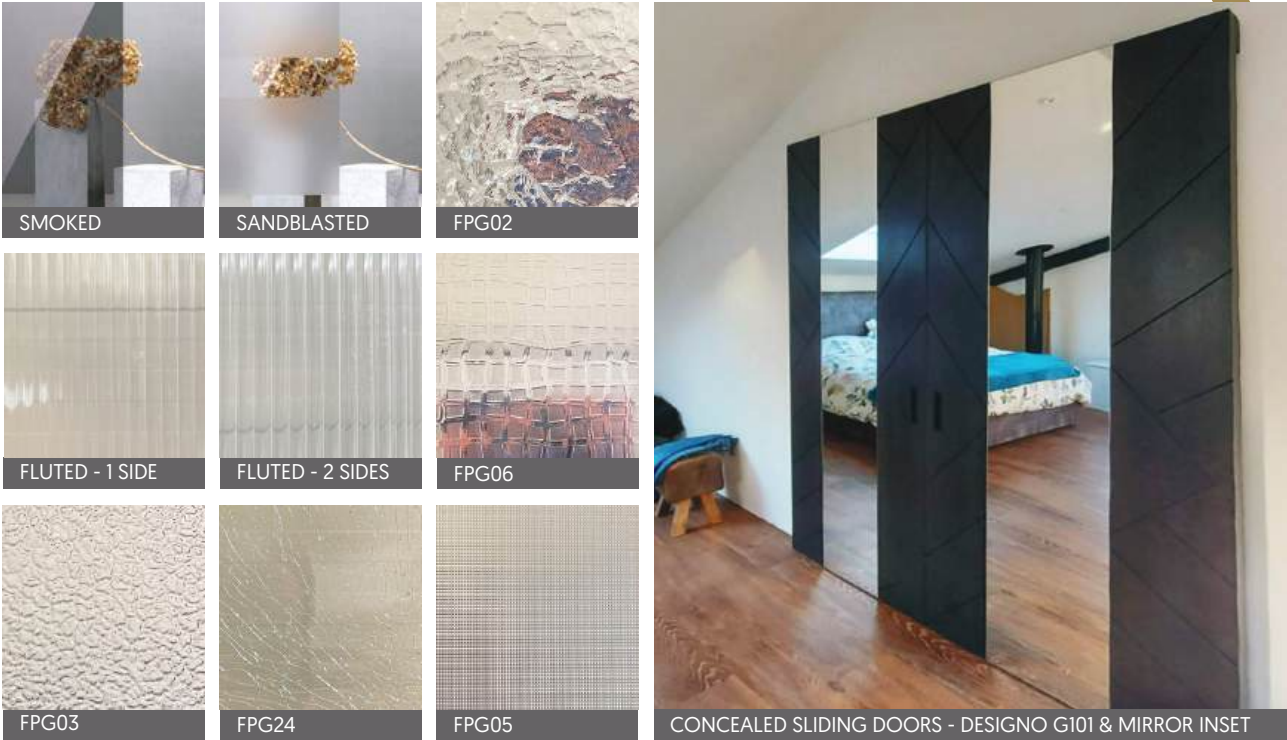
PAINTED FINISHES

We offer a range of colours with a 10% satin lacquer finish to provide a durable protective layer to the wood. The natural grain is captured through the wood to create a stunning contemporary look. Painted finished can also be applied to doors specified in MDF, to achieve a smooth finish without a visible wood grain.. Door sets can also be supplied primed, ready for painting on site.



GLASS SPECIFICATION

Our glass panels are Clear Safety Toughened Glass [6mm] as standard. We also offer an extensive choice of glass options, including Fluted or Reeded Glass, Tinted, Smoked, Mirrored, Frosted or Sandblasted Motif Patterns, Laminated Glass [4+4mm], Fire Rated Glass [7mm] and Acoustic Glass [9.5mm].



LATCHES

A slim latch design to suit our modern style internal doors. The flush magnetic latches ensure an automatic closure, secure hold and easy opening. Latches and latch keeps are available in a choice of colours to blend with either the door finish or to match the finish of your door handles.



CONCEALED HINGES

For clean lines and a minimalistic look, concealed hinges are hidden within the door return. These are CNC precision drilled and factory fitted into our pre-hung door sets for perfect operation and alignment. Available in a choice of colours to blend with either the door finish or to match with your door handles.



DOOR SEALS

Flexible door seals provide a soft closure, prevent draughts and door slamming. Available in a choice of colours to match your door finish.



INLAYS

We offer flush inlays in a choice of finishes, widths and colours.

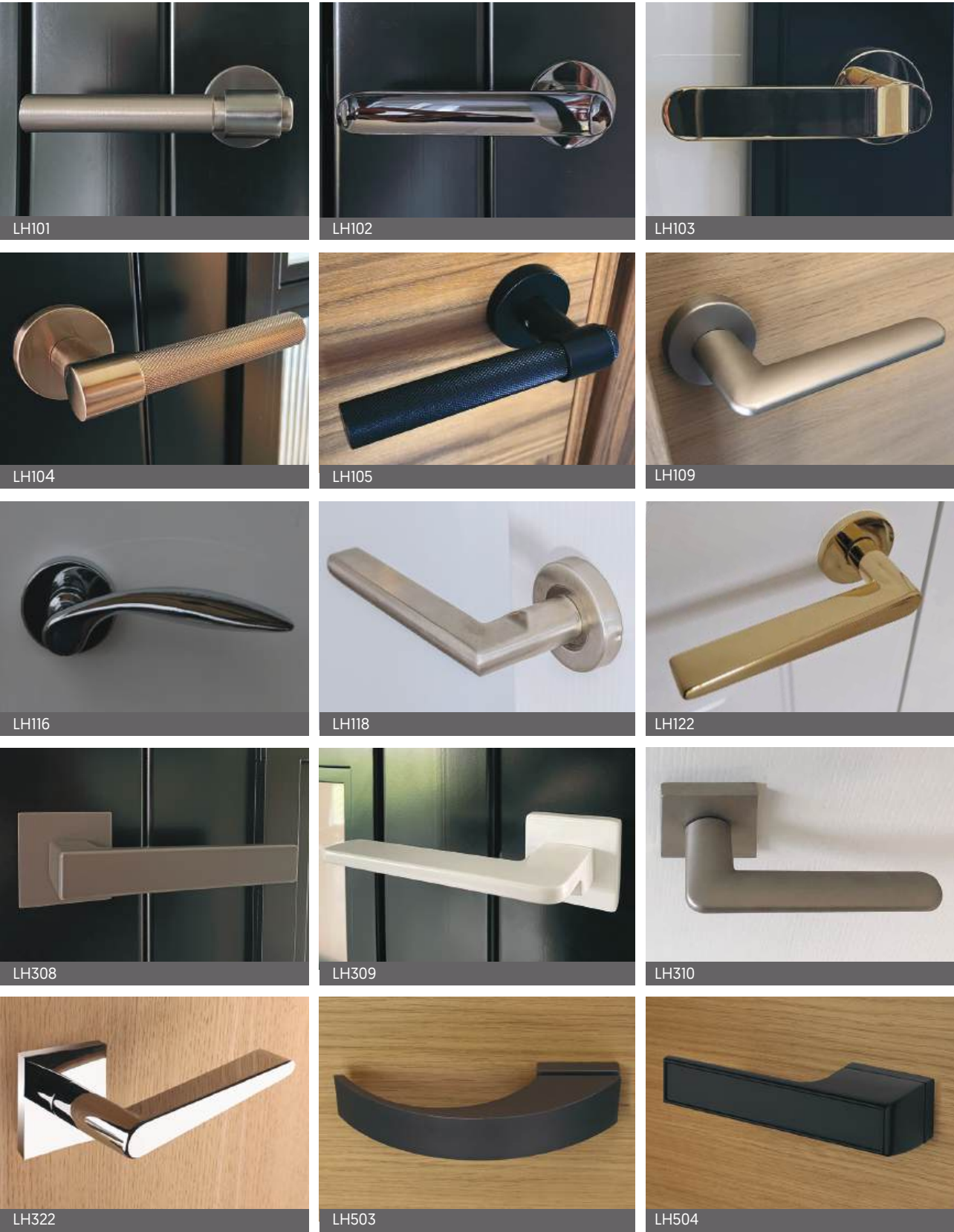
Inlays for IN103, IN105 and IN108 will stand proud of the door surface.



EXTENSIVE CHOICE OF DOOR LEVER HANDLES

Choosing the correct door handle will add the perfect finishing touch to any room and complete your interior design.

Our range of elegant and modern handles are designed to blend seamlessly with our internal door sets. Each handle is manufactured to exacting high standards with a strong durable finish, ideal for use in high traffic areas. Thumb turns, escutcheons and cylinder sets can be specified, as required.



DOOR LEVER HANDLES - FINISHES & SIZES

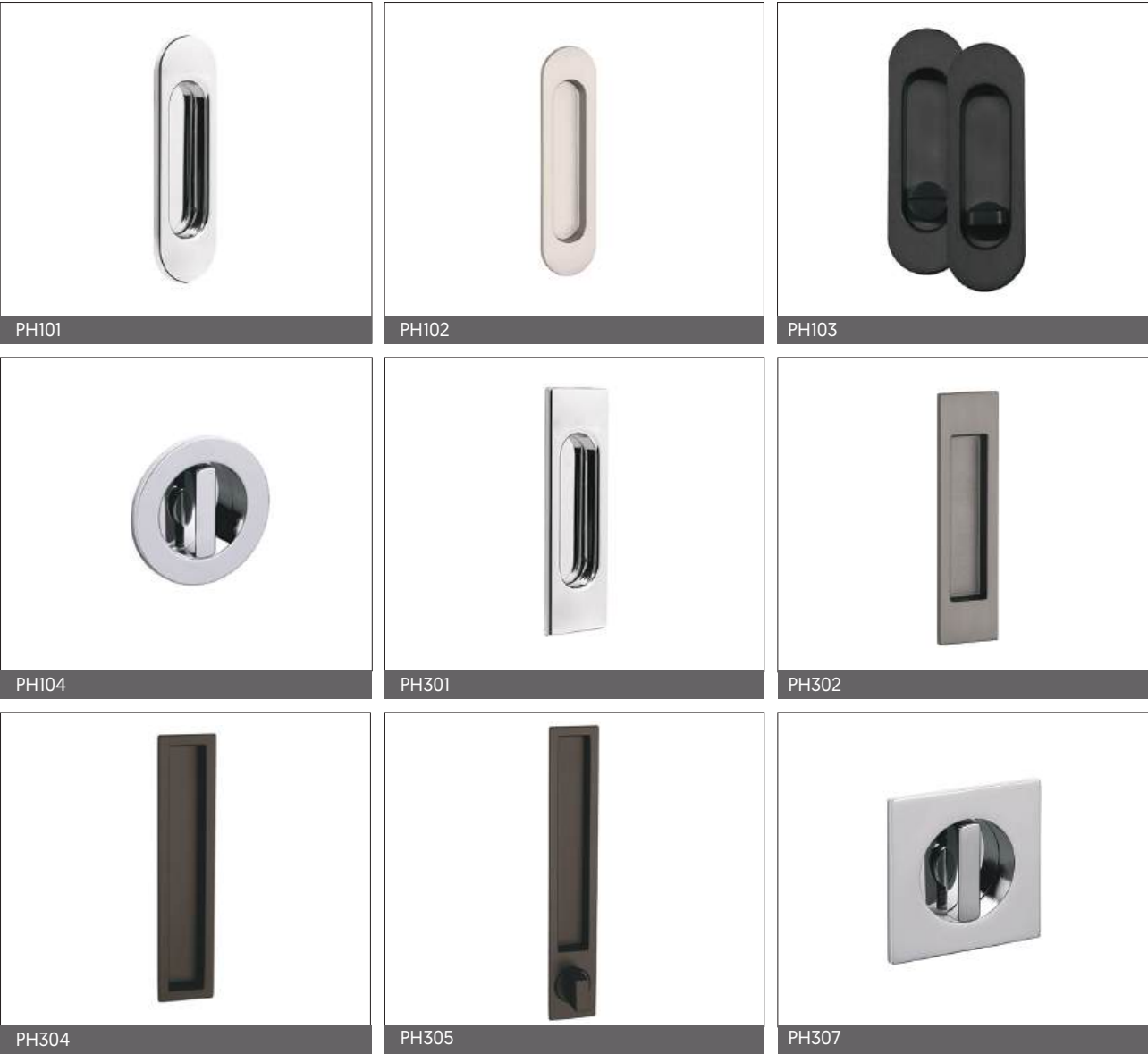
Handle	Base/Rose dia. mm	Handle Length	Handle Projection	Satin black [01]	Satin white [02]	Satin titan grey [04]	Satin chrome[10]	Satin nickel [13]	Satin brass [14]	Satin bronze [15]	Antique Brass [30]	Polished brass [40]	Polished chrome [42]	Polished gold [44]	Polished black nickel [47]	Brushed black nickel [50]	Brushed brass [51]	Brushed copper [52]	Brushed satin nickel [54]	Brushed stainless steel [55]	Satin gold / Satin black [81]	Satin brushed nickel / Satin black [82]	Brushed brass / Satin black [84]
LH101	52	151	64	●												●	●	●			●		
LH102	52	156	58	●									●	●	●								
LH103	52	148	52											●					●				
LH104	52	151	64	●										●	●			●				●	
LH105	52	141	56	●	●					●						●	●		●			●	
LH109	52	161	72	●	●	●	●	●	●	●			●				●						
LH116	52	121	59	●				●			●	●	●										
LH118	52	124	63	●																●			
LH122	52	161	72	●		●	●	●				●	●					●					
LH308	52	130	51	●	●	●	●	●		●			●					●					
LH309	52	150	68	●	●									●	●		●	●	●				
LH310	52	161	72	●	●	●	●	●					●					●					
LH322	52	161	72	●		●	●	●				●	●					●					
LH503	52x35	180	58	●		●	●	●															
LH504*	52x35	154	52	●		●	●	●															
LH506	52x35	160	72	●		●	●	●	●														
LH508	52x35	161	55	●		●	●	●															
LH701	24	130	58	●	●		●		●		●		●										
LH702	25	132	50	●	●		●	●	●		●	●	●										
LH703	22	140	61	●	●		●	●	●		●	●	●										

* LH504 Handle inserts can be in wood to match the detail of the door, stainless steel, PVC (white or black), glass, stone effect or Swarovski crystal.



FLUSH HANDLES FOR POCKET DOORS & SLIDING DOORS

Our range of elegant and modern Flush Handles are designed to suit pocket doors and sliding doors. Each handle is manufactured to exacting high standards with a strong durable finish, ideal for use in high traffic areas. Thumb turns, escutcheons and cylinder sets can be specified, as required.



FLUSH PULL BAR HANDLES FOR SLIDING DOORS

Each handle is manufactured to exacting high standards with a strong durable finish. Non locking only.



DOOR KNOBS

Our range of Door Knobs are manufactured to exacting high standards with a strong durable finish. Thumb turns, escutcheons and cylinder sets can be specified, as required.

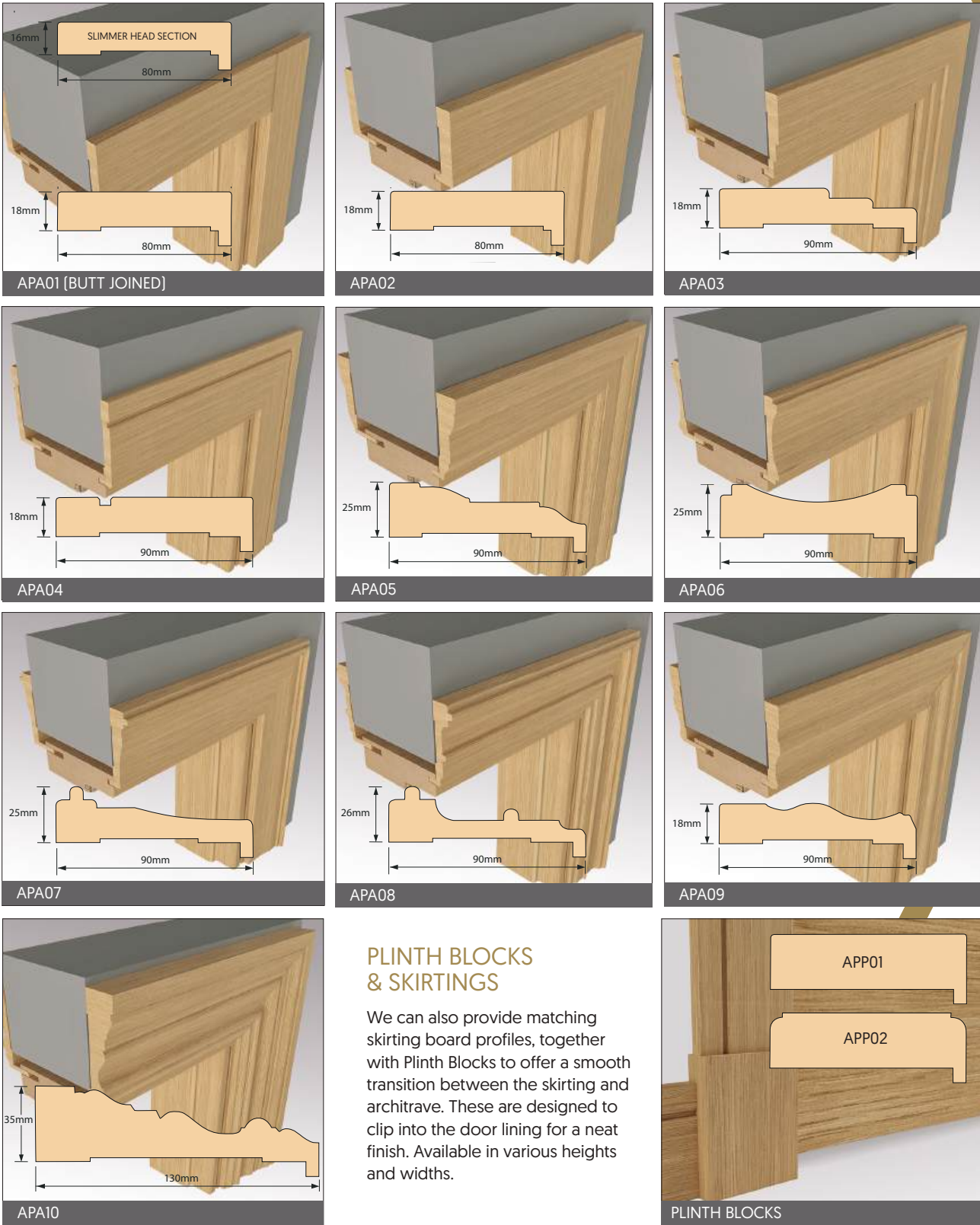


FLUSH HANDLES PULL BAR HANDLES & DOOR KNOBS - FINISHES & SIZES

Handle	Handle Width	Handle Length	Handle Projection	Satin black [01]	Satin white [02]	Satin titan grey [04]	Satin chrome [10]	Satin gold [12]	Satin nickel [13]	Satin brass [14]	Satin bronze [15]	Polished brass [40]	Polished chrome [42]	Polished gold [44]	Polished nickel [45]	Polished black nickel [47]	Brushed stainless steel [55]
PH101	39	125	4	•	•	•	•		•								
PH102	39	152	4	•	•	•	•		•				•	•			
PH103	40	125	5	•													
PH104	42	42	4	•	•	•	•		•	•	•	•	•		•		•
PH301	39	125	4	•	•	•	•		•			•					
PH302	39	152	4	•		•	•	•	•				•	•			
PH304	32	150	2.5	•		•	•		•				•				
PH305	32	190	2.5	•		•	•		•				•				
PH307	42	65	4	•	•	•	•		•	•	•	•	•		•		•
FH101	90	90	2														•
FH301	70	70	2														•
FH302	60	150	4	Any RAL colour													
DK101	57	57	56	•		•											•
DK102	57	57	40	•		•										•	•

ARCHITRAVES

Our Architraves are designed to be used with our telescopic Architrave Door Frame System (page 70). These are carefully matched with each door leaf for total cohesion. Choose from our range of modern architraves with traditional mitred joints, or butt joined with a slimmer head section to create a stylish feature joint for a contemporary look. Our range of classic style architraves will add character to any room and create a continuous design throughout your home. Architraves can be lacquered, stained or painted to any RAL colour.



CNC CUTTER PATTERNS FOR CLASSIC NOUVEAU DOOR SETS

Using the latest technology, CNC machining with intricate detail can create beautiful and stunning effects to enhance your home. All our Classic Nouveau door designs are Flush doors with your choice of CNC cutter patterns, applied to the panel style. We offer a choice of CNC cutter designs from stepped profiles to ovolo, straight and chamfer detailing, to create beautiful and stunning effects.

For a modern contemporary feel, doors can also be veneered which can give a striking contrast against where the cutters cuts through. In addition to our standard range of cutter patterns, we can also offer bespoke cutter designs, for endless possibilities.



ARCHITRAVE DOOR FRAME SYSTEM



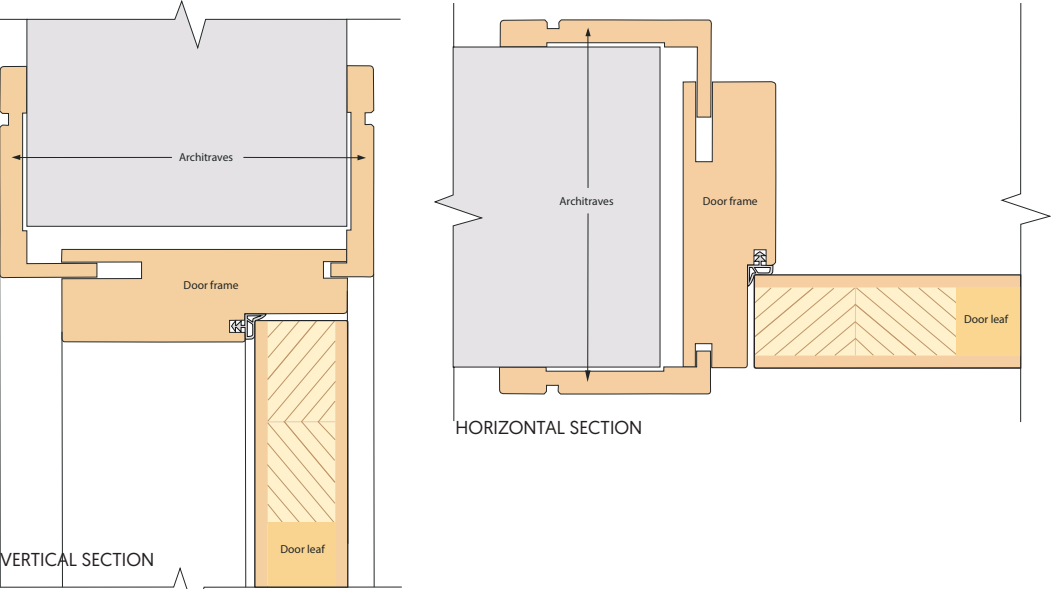
The finish of the door leaf, lining and architraves can be perfectly matched to give an overall stunning impression. The telescopic design incorporates 7mm and 30mm tongues to the architraves.

Once the door set has been secured in the opening, the architrave is clipped into position meaning that there are no visible fixings in the frame or architrave, making a very neat finish. See page 68 for Architrave designs.

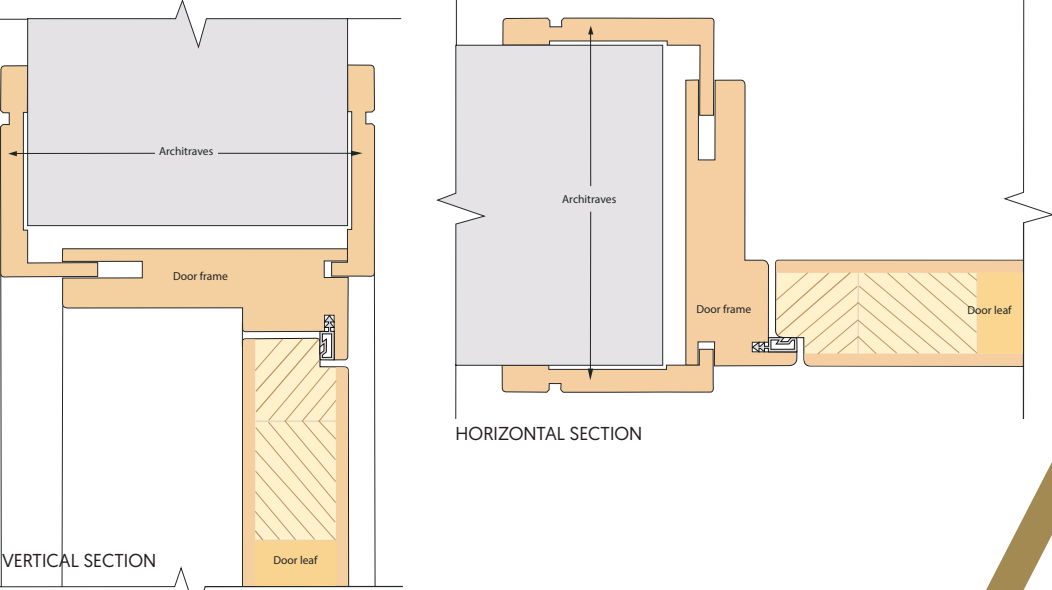
The Architrave Door Frame System provides adjustable fitting for differing wall widths and gives a high level of flexibility for concealing wall unevenness. The installation process is simple and quicker than fitting using traditional methods.

- * Telescopic system - flawless finish
- * Inward or outward opening doors
- * Adjustable fitting
- * FD30, FD30S, FD60
- * Self-closing option

DOOR SETS - OPENING OUTWARD



DOOR SETS - REVERSE OPENING / OPENING INWARD



ARCHITRAVE DOOR FRAME SYSTEM

STANDARD DOOR SIZES & STRUCTURAL OPENING SIZES

Our standard door leaf sizes are shown with structural opening sizes. The necessary tolerances have been included and a 30mm undercut at the bottom of the door is allowed. Standard Door Frame depths are 80mm - 180mm. Made to measure door leaf sizes are up to: 2750mm height, 1300mm width, 180mm+ depth. See Measuring Size Guide overleaf.

SINGLE DOOR SETS - Opening Outward

		STANDARD DOOR WIDTH						
STANDARD DOOR HEIGHT		533mm	610mm	762mm	826mm	838mm	915mm	926mm
	1981mm	2056 x 623	2056 x 700	2056 x 852	2056 x 916	2056 x 928	2056 x 1005	2056 x 1016
	2040mm	2115 x 623	2115 x 700	2115 x 852	2115 x 916	2115 x 928	2115 x 1005	2115 x 1016
	2083mm	2158 x 623	2158 x 700	2158 x 852	2158 x 916	2158 x 928	2158 x 1005	2158 x 1016
	2200mm	2275 x 623	2275 x 700	2275 x 852	2275 x 916	2275 x 928	2275 x 1005	2275 x 1016
	2400mm	2475 x 623	2475 x 700	2475 x 852	2475 x 916	2475 x 928	2475 x 1005	2475 x 1016
	2700mm	2775 x 623	2775 x 700	2775 x 852	2775 x 916	2775 x 928	2775 x 1005	2775 x 1016

DOUBLE DOOR SETS (REBATED) - Opening Outward

		STANDARD DOOR WIDTH					
STANDARD DOOR HEIGHT		2 x 533mm	2 x 610mm	2 x 762mm	2 x 826mm	2 x 838mm	2 x 915mm
	1981mm	2056 x 1151	2056 x 1305	2056 x 1609	2056 x 1737	2056 x 1761	2056 x 1915
	2040mm	2115 x 1151	2115 x 1305	2115 x 1609	2115 x 1737	2115 x 1761	2115 x 1915
	2083mm	2158 x 1151	2158 x 1305	2158 x 1609	2158 x 1737	2158 x 1761	2158 x 1915
	2200mm	2275 x 1151	2275 x 1305	2275 x 1609	2275 x 1737	2275 x 1761	2275 x 1915
	2400mm	2475 x 1151	2475 x 1305	2475 x 1609	2475 x 1737	2475 x 1761	2475 x 1915
	2700mm	2775 x 1151	2775 x 1305	2775 x 1609	2775 x 1737	2775 x 1761	2775 x 1915

SINGLE DOOR SETS - Reverse Opening / Opening Inward

		STANDARD DOOR WIDTH						
STANDARD DOOR HEIGHT		533mm	610mm	762mm	826mm	838mm	915mm	926mm
	1981mm	2061 x 633	2061 x 710	2061 x 862	2061 x 926	2061 x 938	2061 x 1015	2061 x 1026
	2040mm	2120 x 633	2120 x 710	2120 x 862	2120 x 926	2120 x 938	2120 x 1015	2120 x 1026
	2083mm	2163 x 633	2163 x 710	2163 x 862	2163 x 926	2163 x 938	2163 x 1015	2163 x 1026
	2200mm	2280 x 633	2280 x 710	2280 x 862	2280 x 926	2280 x 938	2280 x 1015	2280 x 1026
	2400mm	2480 x 633	2480 x 710	2480 x 862	2480 x 926	2480 x 938	2480 x 1015	2480 x 1026
	2700mm	2780 x 633	2780 x 710	2780 x 862	2780 x 926	2780 x 938	2780 x 1015	2780 x 1026

DOUBLE DOOR SETS (REBATED) - Reverse Opening / Opening Inward

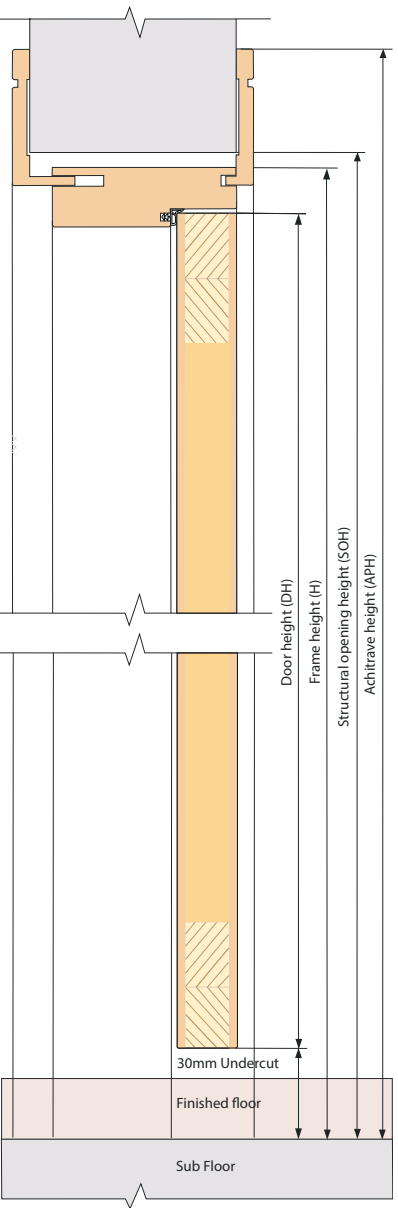
		STANDARD DOOR WIDTH					
STANDARD DOOR HEIGHT		2 x 533mm	2 x 610mm	2 x 762mm	2 x 826mm	2 x 838mm	2 x 915mm
	1981mm	2061 x 1161	2061 x 1315	2061 x 1619	2061 x 1747	2061 x 1771	2061 x 1925
	2040mm	2120 x 1161	2120 x 1315	2120 x 1619	2120 x 1747	2120 x 1771	2120 x 1925
	2083mm	2163 x 1161	2163 x 1315	2163 x 1619	2163 x 1747	2163 x 1771	2163 x 1925
	2200mm	2280 x 1161	2280 x 1315	2280 x 1619	2280 x 1747	2280 x 1771	2280 x 1925
	2400mm	2480 x 1161	2480 x 1315	2480 x 1619	2480 x 1747	2480 x 1771	2480 x 1925
	2700mm	2780 x 1161	2780 x 1315	2780 x 1619	2780 x 1747	2780 x 1771	2780 x 1925

MADE TO MEASURE SIZE GUIDE

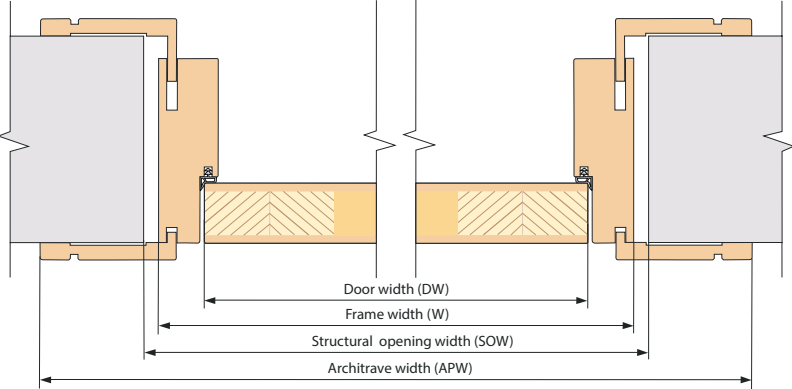
To calculate 'Made to Measure' Door Set sizes and structural opening sizes, the following formulas MUST be adhered to.

ARCHITRAVE DOOR FRAME SYSTEM (FD30 & NFR)

DOOR SETS - OPENING OUTWARD



VERTICAL SECTION



HORIZONTAL SECTION

TO CALCULATE STRUCTURAL OPENING from door leaf size

SINGLE DOOR SETS

Structural opening width = Door width + 90mm
Structural opening height = Door height + 75mm

DOUBLE DOOR SETS (REBATED)

Structural opening width = (Door width x 2) + 85mm
Structural opening height = Door height + 75mm

TO CALCULATE FRAME SIZE from Structural Opening

SINGLE DOOR SETS / DOUBLE DOOR SETS (REBATED)

Frame width = Structural opening width – 28mm
Frame height = Structural opening height – 14mm
Frame depth* = Finished wall reveal depth – 1mm (rounded down to nearest multiple of 20mm e.g. 140mm)
*Frame depth is full wall build up for Architraves to sit over

TO CALCULATE DOOR LEAF SIZE from Structural Opening

SINGLE DOOR SETS

Door width = Structural opening width – 90mm
Door height = Structural opening height – 75mm

DOUBLE DOOR SETS (REBATED)

Each door width = (Structural opening width - 85mm) ÷ 2
Door height = Structural opening height – 75mm

TO CALCULATE DOOR LEAF SIZE from frame size

SINGLE DOOR SETS

Door width = Frame width – 62mm
Door height = Frame height – 61mm
Door depth: Standard = 40mm, FD30 = 45mm

DOUBLE DOOR SETS (REBATED)

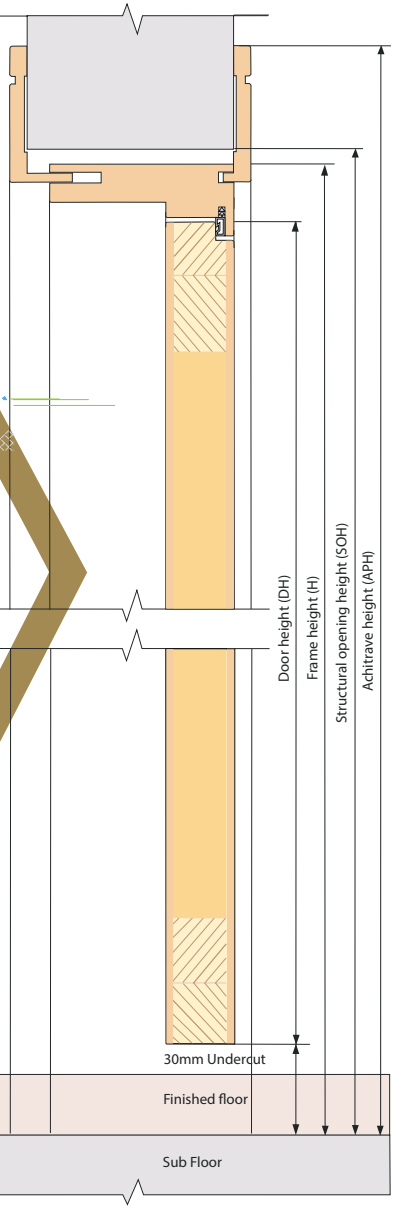
Each door width = (Frame width – 57mm) ÷ 2
Door height = Frame height – 61mm
Door depth: Standard = 40mm, FD30 = 45mm

TO CALCULATE ARCHITRAVE MEASUREMENTS ON WALL from frame size

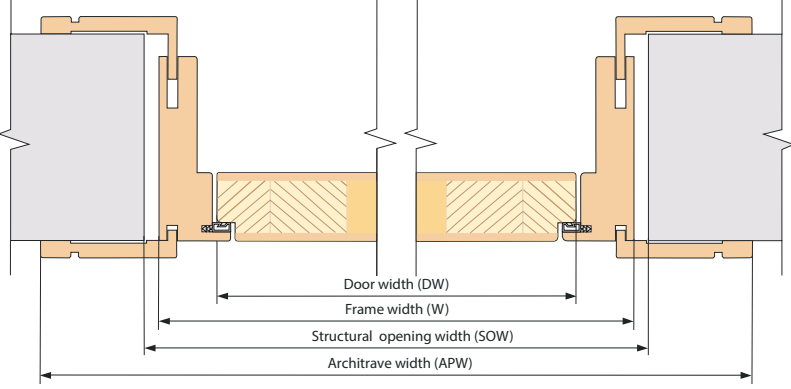
Overall width = Frame width + [Architrave width – 12mm x 2]
Overall height = Frame height + Architrave width – 12mm

Please note, the necessary tolerances have been included within these calculations.

DOOR SETS - REVERSE OPENING / OPENING INWARD



VERTICAL SECTION



HORIZONTAL SECTION

TO CALCULATE STRUCTURAL OPENING from door leaf size

SINGLE DOOR SETS

Structural opening width = Door width + 100mm
Structural opening height = Door height + 80mm

DOUBLE DOOR SETS (REBATED)

Structural opening width = (Door width x 2) + 95mm
Structural opening height = Door height + 80mm

TO CALCULATE FRAME SIZE from Structural Opening

SINGLE DOOR SETS / DOUBLE DOOR SETS (REBATED)

Frame width = Structural opening width – 24mm
Frame height = Structural opening height – 12mm
Frame depth* = Finished wall reveal depth – 1mm (rounded down to nearest multiple of 20mm e.g. 140mm)
*Frame depth is full wall build up for Architraves to sit over

TO CALCULATE DOOR LEAF SIZE from Structural Opening

SINGLE DOOR SETS

Door width = Structural opening width – 100mm
Door height = Structural opening height – 80mm

DOUBLE DOOR SETS (REBATED)

Each door width = (Structural opening width - 95mm) ÷ 2
Door height = Structural opening height – 80mm

TO CALCULATE DOOR LEAF SIZE from frame size

SINGLE DOOR SETS

Door width = Frame width – 76mm
Door height = Frame height – 68mm
Door depth: Standard = 52mm, FD30 = 52mm

DOUBLE DOOR SETS (REBATED)

Each door width = (Frame width – 71mm) ÷ 2
Door height = Frame height – 68mm
Door depth: Standard = 45mm, FD30 = 45mm

TO CALCULATE ARCHITRAVE MEASUREMENTS ON WALL from frame size

Overall width = Frame width + [Architrave width – 12mm x 2]
Overall height = Frame height + Architrave width – 12mm

Please note, the necessary tolerances have been included within these calculations.

SHADOW GAP DOOR FRAME SYSTEM



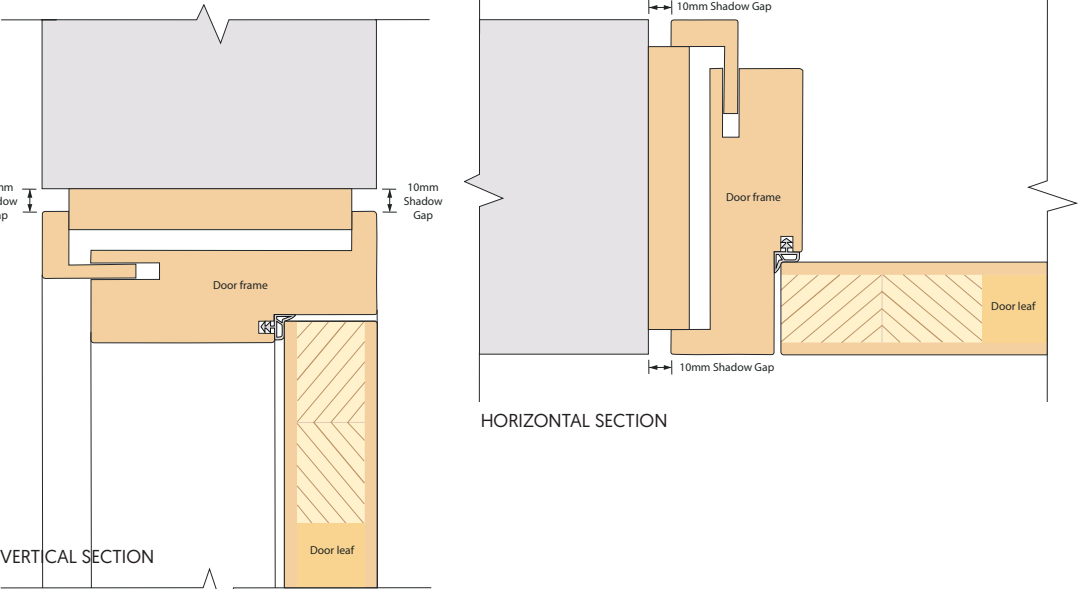
Our Shadow Gap Door Frame System has an innovative design featuring a groove at the junction between the frame and the wall, creating a modern and minimalistic look. There is no requirement for architraves, making it the perfect solution for a contemporary design.

Door frames can be colour matched to the door or wall, and with a painted finish within the shadow gap itself. LED lighting can also be set within the profile for a dramatic effect. Matching skirting boards can provide a continuous groove.

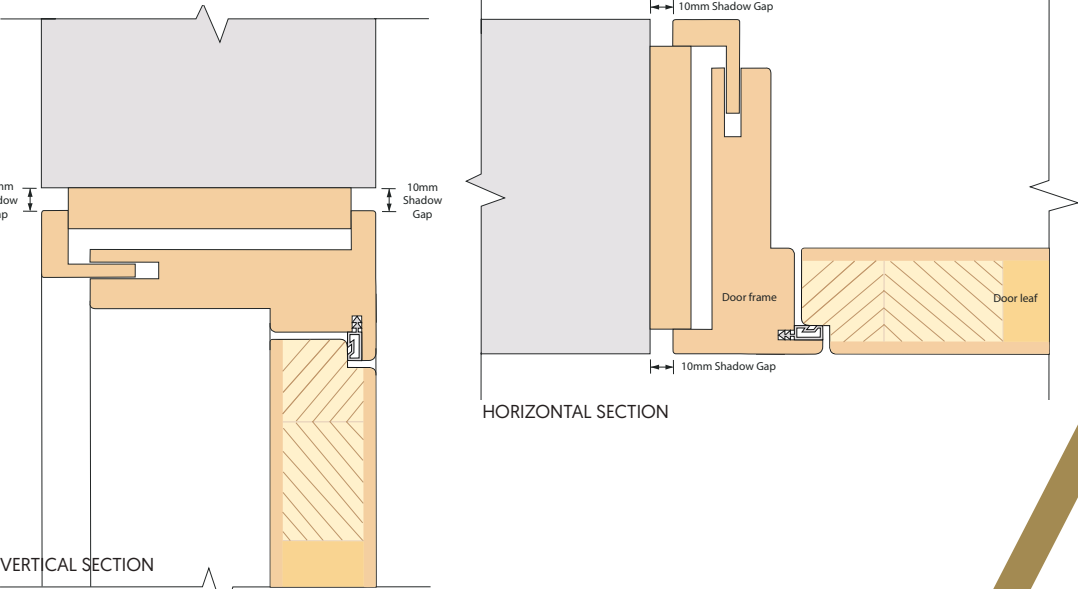
The system has a special snap-in plastering mesh incorporated within the profile. This is covered using a plaster skim or is filled, ensuring cracks do not appear between the wall and the frame. The size of the shadow gap can also be altered to between 3mm and 15mm, using varied thickness frame packers. The system is suitable for single or double-boarded walls.

- * Clean lines with no need for architrave
- * Inward or outward opening doors
- * Self-closing hinge option

DOOR SETS - OPENING OUTWARD



DOOR SETS - REVERSE OPENING / OPENING INWARD



SHADOW GAP DOOR FRAME SYSTEM

STANDARD DOOR SIZES & STRUCTURAL OPENING SIZES

Our standard door leaf sizes are shown with structural opening sizes. The necessary tolerances have been included and a 30mm undercut at the bottom of the door is allowed. Standard Door Frame depths are 80mm - 180mm. Made to measure door leaf sizes are up to: 2750mm height, 1300mm width, 180mm+ depth. See Measuring Size Guide overleaf.

SINGLE DOOR SETS - Opening Outward

		STANDARD DOOR WIDTH						
STANDARD DOOR HEIGHT		533mm	610mm	762mm	826mm	838mm	915mm	926mm
	1981mm	2071 x 653	2071 x 730	2071 x 882	2071 x 946	2071 x 958	2071 x 1035	2071 x 1046
	2040mm	2130 x 653	2130 x 730	2130 x 882	2130 x 946	2130 x 958	2130 x 1035	2130 x 1046
	2083mm	2173 x 653	2173 x 730	2173 x 882	2173 x 946	2173 x 958	2173 x 1035	2173 x 1046
	2200mm	2290 x 653	2290 x 730	2290 x 882	2290 x 946	2290 x 958	2290 x 1035	2290 x 1046
	2400mm	2490 x 653	2490 x 730	2490 x 882	2490 x 946	2490 x 958	2490 x 1035	2490 x 1046
	2700mm	2790 x 653	2790 x 730	2790 x 882	2790 x 946	2790 x 958	2790 x 1035	2790 x 1046

DOUBLE DOOR SETS (REBATED) - Opening Outward

		STANDARD DOOR WIDTH					
STANDARD DOOR HEIGHT		2 x 533mm	2 x 610mm	2 x 762mm	2 x 826mm	2 x 838mm	2 x 915mm
	1981mm	2071 x 1181	2071 x 1335	2071 x 1639	2071 x 1767	2071 x 1791	2071 x 1945
	2040mm	2130 x 1181	2130 x 1335	2130 x 1639	2130 x 1767	2130 x 1791	2130 x 1945
	2083mm	2173 x 1181	2173 x 1335	2173 x 1639	2173 x 1767	2173 x 1791	2173 x 1945
	2200mm	2290 x 1181	2290 x 1335	2290 x 1639	2290 x 1767	2290 x 1791	2290 x 1945
	2400mm	2490 x 1181	2490 x 1335	2490 x 1639	2490 x 1767	2490 x 1791	2490 x 1945
	2700mm	2790 x 1181	2790 x 1335	2790 x 1639	2790 x 1767	2790 x 1791	2790 x 1945

SINGLE DOOR SETS - Reverse Opening / Opening Inward

		STANDARD DOOR WIDTH						
STANDARD DOOR HEIGHT		533mm	610mm	762mm	826mm	838mm	915mm	926mm
	1981mm	2076 x 663	2076 x 740	2076 x 892	2076 x 956	2076 x 968	2076 x 1045	2076 x 1056
	2040mm	2135 x 663	2135 x 740	2135 x 892	2135 x 956	2135 x 968	2135 x 1045	2135 x 1056
	2083mm	2178 x 663	2178 x 740	2178 x 892	2178 x 956	2178 x 968	2178 x 1045	2178 x 1056
	2200mm	2295 x 663	2295 x 740	2295 x 892	2295 x 956	2295 x 968	2295 x 1045	2295 x 1056
	2400mm	2495 x 663	2495 x 740	2495 x 892	2495 x 956	2495 x 968	2495 x 1045	2495 x 1056
	2700mm	2795 x 663	2795 x 740	2795 x 852	2795 x 956	2795 x 968	2795 x 1045	2795 x 1056

DOUBLE DOOR SETS (REBATED) - Reverse Opening / Opening Inward

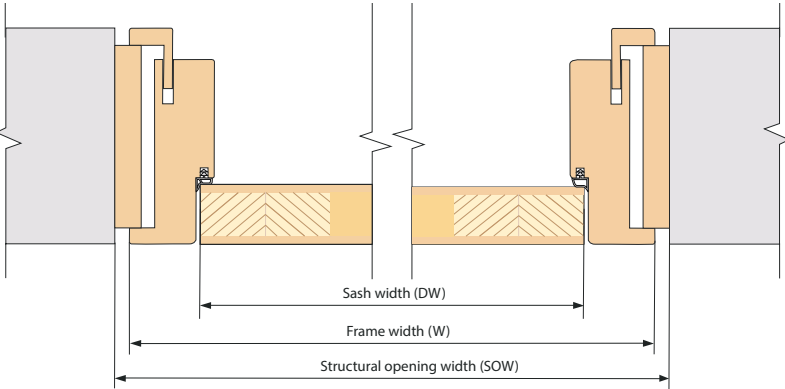
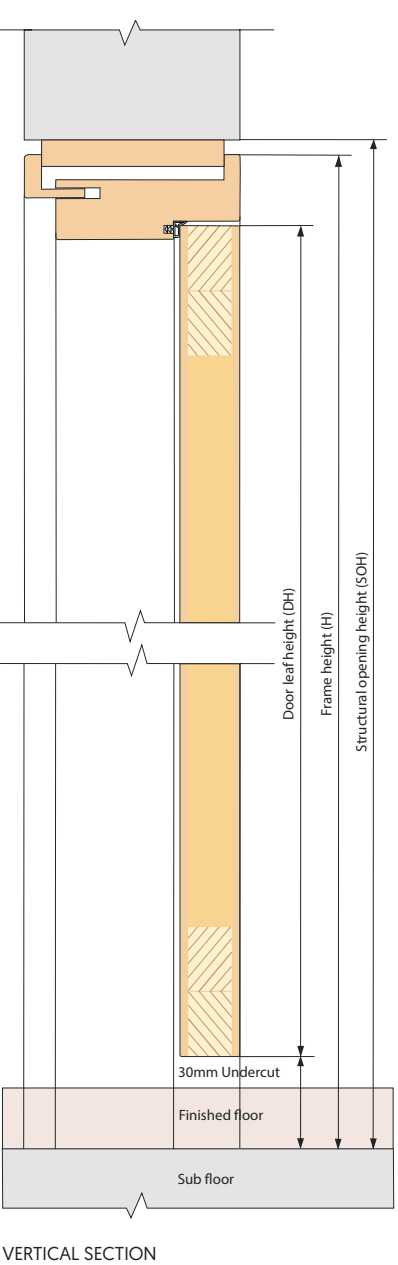
		STANDARD DOOR WIDTH					
STANDARD DOOR HEIGHT		2 x 533mm	2 x 610mm	2 x 762mm	2 x 826mm	2 x 838mm	2 x 915mm
	1981mm	2076 x 1191	2076 x 1345	2076 x 1649	2076 x 1777	2076 x 1801	2076 x 1955
	2040mm	2135 x 1191	2135 x 1345	2135 x 1649	2135 x 1777	2135 x 1801	2135 x 1955
	2083mm	2178 x 1191	2178 x 1345	2178 x 1649	2178 x 1777	2178 x 1801	2178 x 1955
	2200mm	2295 x 1191	2295 x 1345	2295 x 1649	2295 x 1777	2295 x 1801	2295 x 1955
	2400mm	2495 x 1191	2495 x 1345	2495 x 1649	2495 x 1777	2495 x 1801	2495 x 1955
	2700mm	2795 x 1191	2795 x 1345	2795 x 1649	2795 x 1777	2795 x 1801	2795 x 1955

MADE TO MEASURE SIZE GUIDE

To calculate 'Made to Measure' Door Set sizes and structural opening sizes, the following formulas MUST be adhered to.

SHADOW GAP DOOR FRAME SYSTEM (FD30 & NFR)

DOOR SETS - OPENING OUTWARD



HORIZONTAL SECTION

TO CALCULATE STRUCTURAL OPENING from door leaf size

SINGLE DOOR SETS

Structural opening width = Door width + 120mm
Structural opening height = Door height + 90mm

DOUBLE DOOR SETS (REBATED)

Structural opening width = [Door width x 2] + 115mm
Structural opening height = Door height + 90mm

TO CALCULATE FRAME SIZE from Structural Opening

SINGLE DOOR SETS / DOUBLE DOOR SETS (REBATED)

Frame width = Structural opening width – 22mm
Frame height = Structural opening height – 11mm
Frame depth* = Structural opening depth – 24mm
* Frame depth is full wall build up. We advise to plaster reveals.
Walls must be straight and level

TO CALCULATE DOOR LEAF SIZE from Structural Opening

SINGLE DOOR SETS

Door width = Structural opening width – 120mm
Door height = Structural opening height – 90mm

DOUBLE DOOR SETS (REBATED)

Each door width = [Structural opening width - 115mm] ÷ 2
Door height = Structural opening height – 90mm

TO CALCULATE DOOR LEAF SIZE from frame size

SINGLE DOOR SETS

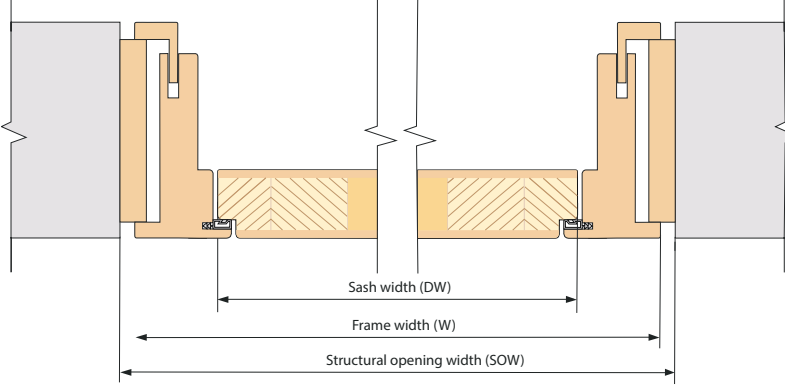
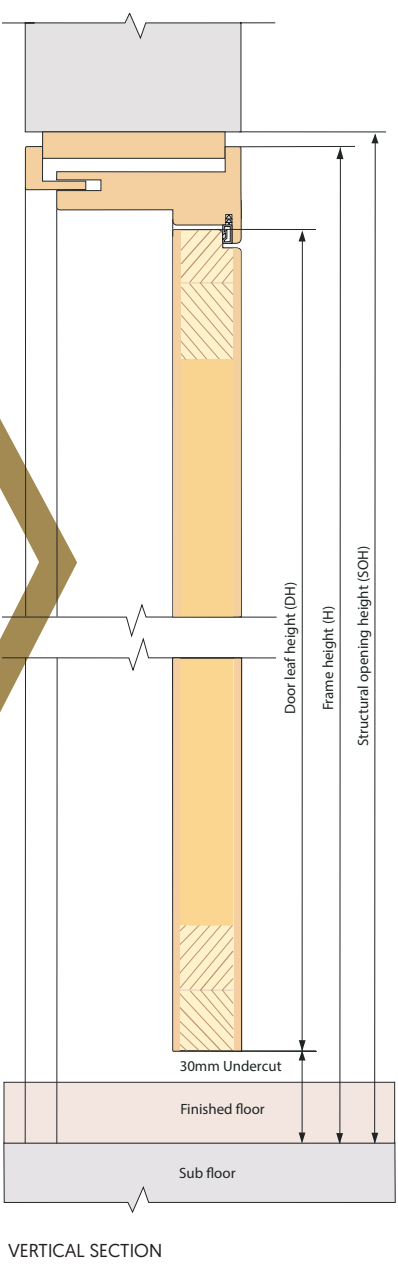
Door width = Frame width – 98mm
Door height = Frame height – 79mm
Door depth: Standard = 40mm, FD30 = 45mm

DOUBLE DOOR SETS (REBATED)

Each door width = [Frame width – 93mm] ÷ 2
Door height = Frame height – 79mm
Door depth: Standard = 40mm, FD30 = 45mm

Please note, the necessary tolerances have been included within these calculations.

DOOR SETS - REVERSE OPENING / OPENING INWARD



HORIZONTAL SECTION

TO CALCULATE STRUCTURAL OPENING from door leaf size

SINGLE DOOR SETS

Structural opening width = Door width + 130mm
Structural opening height = Door height + 95mm

DOUBLE DOOR SETS (REBATED)

Structural opening width = [Door width x 2] + 125mm
Structural opening height = Door height + 95mm

TO CALCULATE FRAME SIZE from Structural Opening

SINGLE DOOR SETS / DOUBLE DOOR SETS (REBATED)

Frame width = Structural opening width – 18mm
Frame height = Structural opening height – 9mm
Frame depth* = Structural opening depth – 24mm
* Frame depth is full wall build up. We advise to plaster reveals.
Walls must be straight and level

TO CALCULATE DOOR LEAF SIZE from Structural Opening

SINGLE DOOR SETS

Door width = Structural opening width – 130mm
Door height = Structural opening height – 95mm

DOUBLE DOOR SETS (REBATED)

Each door width = [Structural opening width - 125mm] ÷ 2
Door height = Structural opening height – 95mm

TO CALCULATE DOOR LEAF SIZE from frame size

SINGLE DOOR SETS

Door width = Frame width – 112mm
Door height = Frame height – 86mm
Door depth: Standard = 52mm, FD30 = 52mm

DOUBLE DOOR SETS (REBATED)

Each door width = [Frame width – 107mm] ÷ 2
Door height = Frame height – 86mm
Door depth: Standard = 45mm, FD30 = 45mm

Please note, the necessary tolerances have been included within these calculations.

CONCEALED DOOR FRAME SYSTEM [NFR]

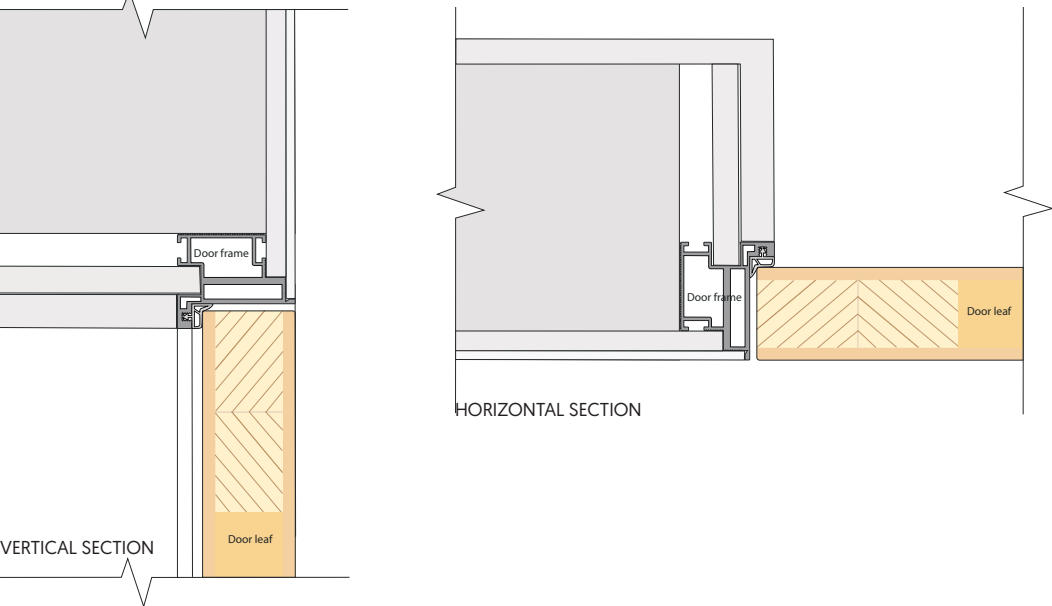


Our Concealed Door Frame System is designed to blend perfectly with the surrounding façade, flush fitting to give the effect of a hidden frame. Each frame system is crafted to suit its individual opening, wall depth and build up type such as stud, masonry, tile or plasterboard, without the need to plaster the reveal. It can also be applied to other materials such as wood cladding, metal, plastic, concrete or porcelain.

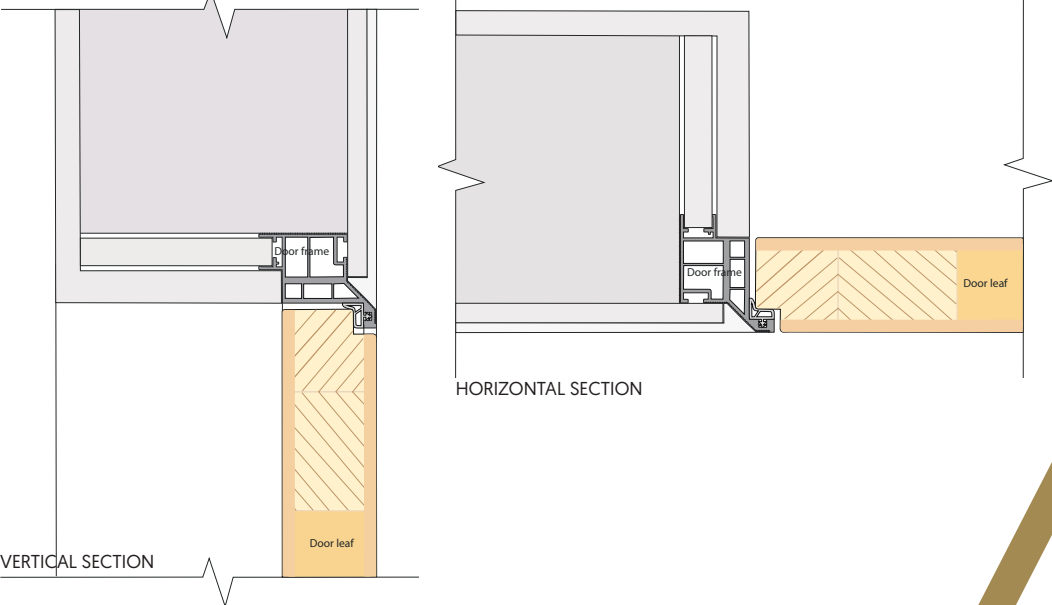
Our concealed door set system can also be configured without a head in the ceiling, for floor to ceiling openings.

- * Clean lines with no need for architrave
- * Inward or outward opening doors
- * Self-closing hinge option
- * Hidden flush handle option
- * Biometric fingerprint entry options

DOOR SETS - OPENING OUTWARD



DOOR SETS - REVERSE OPENING / OPENING INWARD



CONCEALED DOOR FRAME SYSTEM [NFR]

STANDARD DOOR SIZES & STRUCTURAL OPENING SIZES

Our standard door leaf sizes are shown with structural opening sizes. The necessary tolerances have been included and a 30mm undercut at the bottom of the door is allowed. Standard Door Frame depths are 80mm - 180mm. Made to measure door leaf sizes are up to: 2750mm height, 1300mm width, 180mm+ depth. See Measuring Size Guide overleaf.

SINGLE DOOR SETS - Opening Outward

		STANDARD DOOR WIDTH						
STANDARD DOOR HEIGHT		533mm	610mm	762mm	826mm	838mm	915mm	926mm
	1981mm	2056 x 623	2056 x 700	2056 x 852	2056 x 916	2056 x 928	2056 x 1005	2056 x 1016
	2040mm	2115 x 623	2115 x 700	2115 x 852	2115 x 916	2115 x 928	2115 x 1005	2115 x 1016
	2083mm	2158 x 623	2158 x 700	2158 x 852	2158 x 916	2158 x 928	2158 x 1005	2158 x 1016
	2200mm	2275 x 623	2275 x 700	2275 x 852	2275 x 916	2275 x 928	2275 x 1005	2275 x 1016
	2400mm	2475 x 623	2475 x 700	2475 x 852	2475 x 916	2475 x 928	2475 x 1005	2475 x 1016
	2700mm	2775 x 623	2775 x 700	2775 x 852	2775 x 916	2775 x 928	2775 x 1005	2775 x 1016

DOUBLE DOOR SETS (REBATED) - Opening Outward

		STANDARD DOOR WIDTH					
STANDARD DOOR HEIGHT		2 x 533mm	2 x 610mm	2 x 762mm	2 x 826mm	2 x 838mm	2 x 915mm
	1981mm	2056 x 1151	2056 x 1305	2056 x 1609	2056 x 1737	2056 x 1761	2056 x 1915
	2040mm	2115 x 1151	2115 x 1305	2115 x 1609	2115 x 1737	2115 x 1761	2115 x 1915
	2083mm	2158 x 1151	2158 x 1305	2158 x 1609	2158 x 1737	2158 x 1761	2158 x 1915
	2200mm	2275 x 1151	2275 x 1305	2275 x 1609	2275 x 1737	2275 x 1761	2275 x 1915
	2400mm	2475 x 1151	2475 x 1305	2475 x 1609	2475 x 1737	2475 x 1761	2475 x 1915
	2700mm	2775 x 1151	2775 x 1305	2775 x 1609	2775 x 1737	2775 x 1761	2775 x 1915

SINGLE DOOR SETS - Reverse Opening / Opening Inward

		STANDARD DOOR WIDTH						
STANDARD DOOR HEIGHT		533mm	610mm	762mm	826mm	838mm	915mm	926mm
	1981mm	2056 x 623	2056 x 700	2056 x 852	2056 x 916	2056 x 916	2056 x 928	2056 x 1005
	2040mm	2115 x 623	2115 x 700	2115 x 852	2115 x 916	2115 x 916	2115 x 928	2115 x 1005
	2083mm	2158 x 623	2158 x 700	2158 x 852	2158 x 916	2158 x 916	2158 x 928	2158 x 1005
	2200mm	2275 x 623	2275 x 700	2275 x 852	2275 x 916	2275 x 916	2275 x 928	2275 x 1005
	2400mm	2475 x 623	2475 x 700	2475 x 852	2475 x 916	2475 x 916	2475 x 928	2475 x 1005
	2700mm	2775 x 623	2775 x 700	2775 x 852	2775 x 916	2775 x 916	2775 x 928	2775 x 1005

DOUBLE DOOR SETS (REBATED) - Reverse Opening / Opening Inward

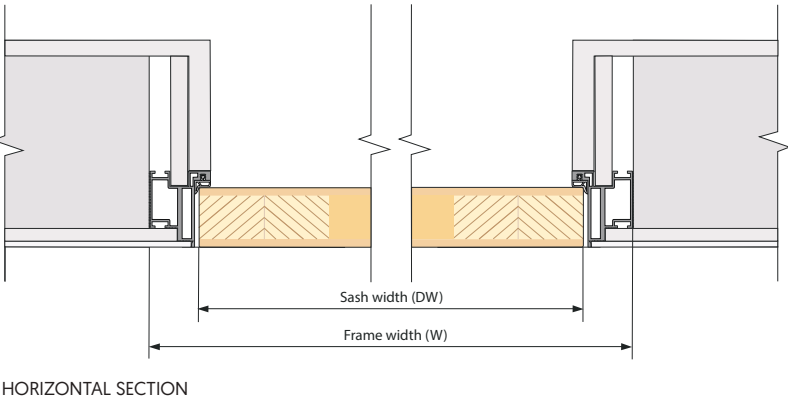
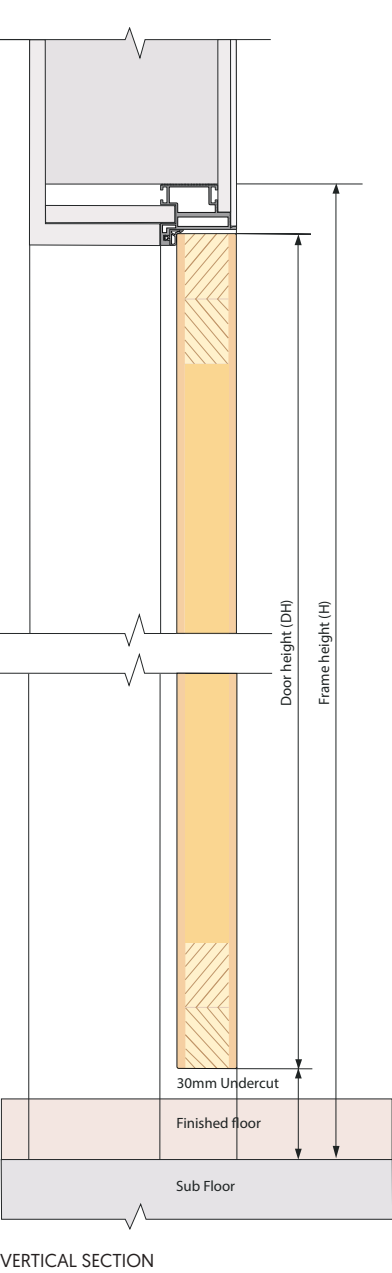
		STANDARD DOOR WIDTH					
STANDARD DOOR HEIGHT		2 x 533mm	2 x 610mm	2 x 762mm	2 x 826mm	2 x 838mm	2 x 915mm
	1981mm	2056 x 1151	2056 x 1305	2056 x 1609	2056 x 1737	2056 x 1761	2056 x 1915
	2040mm	2115 x 1151	2115 x 1305	2115 x 1609	2115 x 1737	2115 x 1761	2115 x 1915
	2083mm	2158 x 1151	2158 x 1305	2158 x 1609	2158 x 1737	2158 x 1761	2158 x 1915
	2200mm	2275 x 1151	2275 x 1305	2275 x 1609	2275 x 1737	2275 x 1761	2275 x 1915
	2400mm	2475 x 1151	2475 x 1305	2475 x 1609	2475 x 1737	2475 x 1761	2475 x 1915
	2700mm	2775 x 1151	2775 x 1305	2775 x 1609	2775 x 1737	2775 x 1761	2775 x 1915

MADE TO MEASURE SIZE GUIDE

To calculate 'Made to Measure' Door Set sizes and structural opening sizes, the following formulas MUST be adhered to.

CONCEALED DOOR FRAME SYSTEM (NFR)

DOOR SETS - OPENING OUTWARD



HORIZONTAL SECTION

TO CALCULATE STRUCTURAL OPENING from door leaf size

SINGLE DOOR SETS

Structural opening width = Door width + 90mm
Structural opening height = Door height + 75mm

DOUBLE DOOR SETS

Structural opening width = [Door width x 2] + 85mm
Structural opening height = Door height + 75mm

TO CALCULATE FRAME SIZE from Structural Opening

SINGLE DOOR SETS / DOUBLE DOOR SETS (REBATED)

Frame width = Structural opening width – 25mm
Frame height = Structural opening height – 12.5mm
Frame depth* = Finished wall reveal depth – 1mm (rounded down to nearest multiple of 20mm e.g. 140mm)
*Frame depth is finished wall to finished wall. Please specify wall construction; ie. masonry/stud/ tiles/plaster/ wall cladding. When measuring Structural Depth walls must be straight and level.

TO CALCULATE DOOR LEAF SIZE from Structural Opening

SINGLE DOOR SETS

Door width = Structural opening width – 90mm
Door height = Structural opening height – 75mm

DOUBLE DOOR SETS (REBATED)

Each door width = (Structural opening width - 85mm) ÷ 2
Door height = Structural opening height – 75mm

TO CALCULATE DOOR LEAF SIZE from frame size

SINGLE DOOR SETS

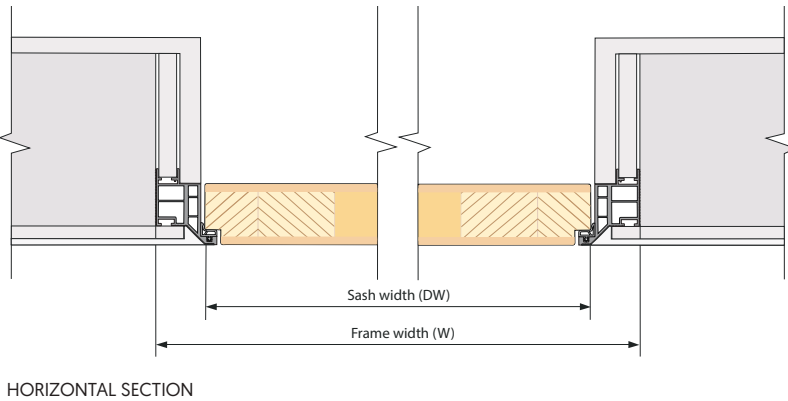
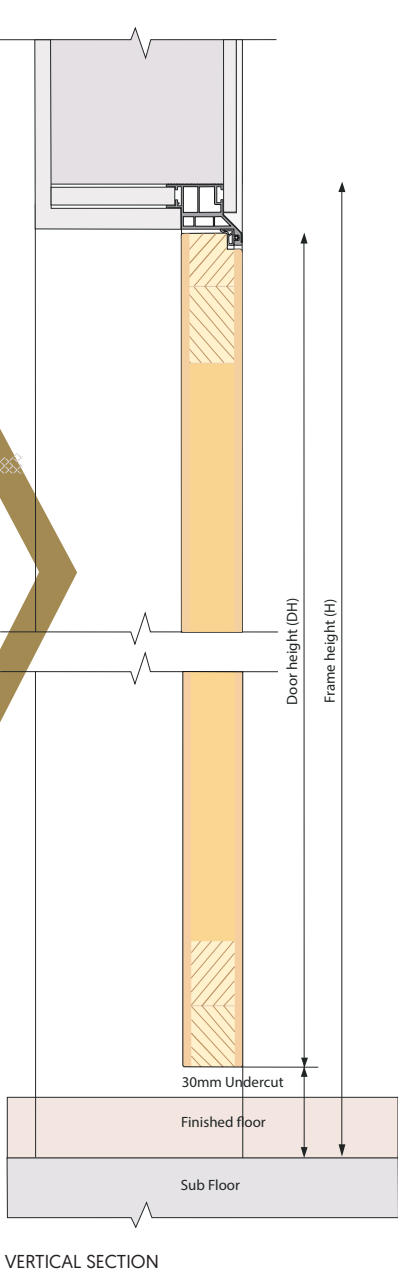
Door width = Frame width – 65mm
Door height = Frame height – 62.5mm
Door depth: Standard = 40mm

DOUBLE DOOR SETS (REBATED)

Each door width = [Frame width – 60mm] ÷ 2
Door height = Frame height – 62.5mm
Door depth: Standard = 40mm

Please note, the necessary tolerances have been included within these calculations.

DOOR SETS - REVERSE OPENING / OPENING INWARD



HORIZONTAL SECTION

TO CALCULATE STRUCTURAL OPENING from door leaf size

SINGLE DOOR SETS

Structural opening width = Door width + 90mm
Structural opening height = Door height + 75mm

DOUBLE DOOR SETS (REBATED)

Structural opening width = [Door width x 2] + 85mm
Structural opening height = Door height + 75mm

TO CALCULATE FRAME SIZE from Structural Opening

SINGLE DOOR SETS / DOUBLE DOOR SETS (REBATED)

Frame width = Structural opening width – 25mm
Frame height = Structural opening height – 12.5mm
Frame depth* = Finished wall reveal depth – 1mm (rounded down to nearest multiple of 20mm e.g. 140mm)
*Frame depth is finished wall to finished wall. Please specify wall construction; ie. masonry/stud/ tiles/plaster/ wall cladding. When measuring Structural Depth walls must be straight and level.

TO CALCULATE DOOR LEAF SIZE from Structural Opening

SINGLE DOOR SETS

Door width = Structural opening width – 90mm
Door height = Structural opening height – 75mm

DOUBLE DOOR SETS (REBATED)

Each door width = (Structural opening width - 85mm) ÷ 2
Door height = Structural opening height – 75mm

TO CALCULATE DOOR LEAF SIZE from frame size

SINGLE DOOR SETS

Door width = Frame width – 65mm
Door height = Frame height – 62.5mm
Door depth: Standard = 45mm

DOUBLE DOOR SETS (REBATED)

Each door width = [Frame width – 60mm] ÷ 2
Door height = Frame height – 62.5mm
Door depth: Standard = 40mm

Please note, the necessary tolerances have been included within these calculations.

CONCEALED DOOR FRAME SYSTEM [FD30]

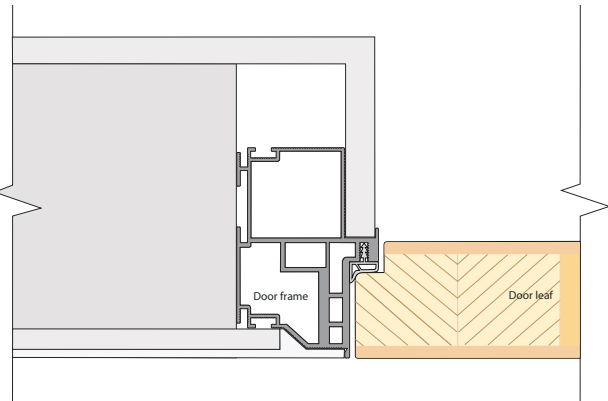
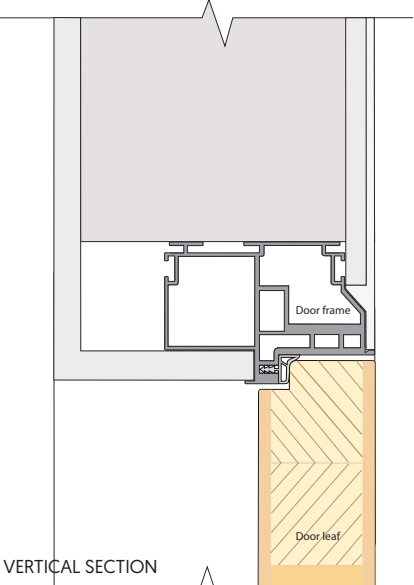


Our Concealed Door Frame System is designed to blend perfectly with the surrounding façade, flush fitting to give the effect of a hidden frame. Each frame system is crafted to suit its individual opening, wall depth and build up type such as stud, masonry, tile or plasterboard, without the need to plaster the reveal. It can also be applied to other materials such as wood cladding, metal, plastic, concrete or porcelain.

Our concealed door set system can also be configured without a head in the ceiling, for floor to ceiling openings.

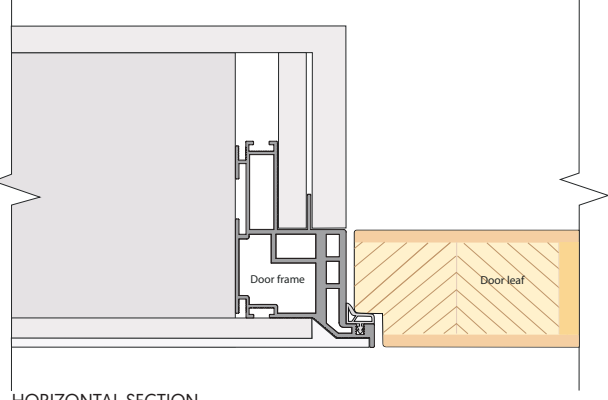
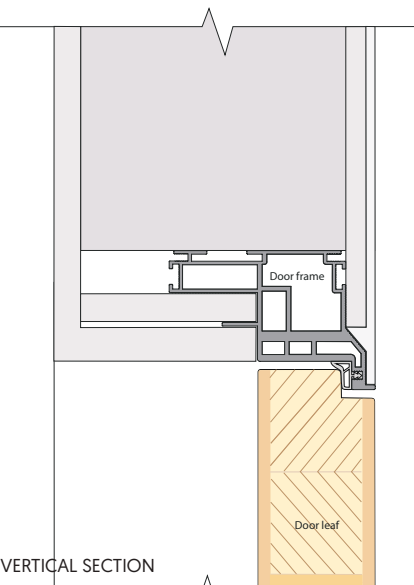
- * Clean lines with no need for architrave
- * Inward or outward opening doors
- * FD30, FD30S, FD60
- * Self-closing hinge option
- * Hidden flush handle option
- * Biometric fingerprint entry options

DOOR SETS - OPENING OUTWARD



HORIZONTAL SECTION

DOOR SETS - REVERSE OPENING / OPENING INWARD



HORIZONTAL SECTION

VERTICAL SECTION

CONCEALED DOOR FRAME SYSTEM [FD30]

STANDARD DOOR SIZES & STRUCTURAL OPENING SIZES

Our standard door leaf sizes are shown with structural opening sizes. The necessary tolerances have been included and a 30mm undercut at the bottom of the door is allowed. Standard Door Frame depths are 80mm - 180mm. Made to measure door leaf sizes are up to: 2750mm height, 1300mm width, 180mm+ depth. See Measuring Size Guide overleaf.

SINGLE DOOR SETS - Opening Outward

		STANDARD DOOR WIDTH						
STANDARD DOOR HEIGHT		533mm	610mm	762mm	826mm	838mm	915mm	926mm
	1981mm	2076 x 663	2076 x 740	2076 x 892	2076 x 956	2076 x 968	2076 x 1045	2076 x 1056
	2040mm	2135 x 663	2135 x 740	2135 x 892	2135 x 956	2135 x 968	2135 x 1045	2135 x 1056
	2083mm	2178 x 663	2178 x 740	2178 x 892	2178 x 956	2178 x 968	2178 x 1045	2178 x 1056
	2200mm	2295 x 663	2295 x 740	2295 x 892	2295 x 956	2295 x 968	2295 x 1045	2295 x 1056
	2400mm	2495 x 663	2495 x 740	2495 x 892	2495 x 956	2495 x 968	2495 x 1045	2495 x 1056
	2700mm	2795 x 663	2795 x 740	2795 x 892	2795 x 956	2795 x 968	2795 x 1045	2795 x 1056

DOUBLE DOOR SETS [REBATED] - Opening Outward

		STANDARD DOOR WIDTH					
STANDARD DOOR HEIGHT		2 x 533mm	2 x 610mm	2 x 762mm	2 x 826mm	2 x 838mm	2 x 915mm
	1981mm	2076 x 1191	2076 x 1345	2076 x 1649	2076 x 1777	2076 x 2001	2076 x 1955
	2040mm	2135 x 1191	2135 x 1345	2135 x 1649	2135 x 1777	2135 x 2001	2135 x 1955
	2083mm	2178 x 1191	2178 x 1345	2178 x 1649	2178 x 1777	2178 x 2001	2178 x 1955
	2200mm	2295 x 1191	2295 x 1345	2295 x 1649	2295 x 1777	2295 x 2001	2295 x 1955
	2400mm	2495 x 1191	2495 x 1345	2495 x 1649	2495 x 1777	2495 x 2001	2495 x 1955
	2700mm	2795 x 1191	2795 x 1345	2795 x 1649	2795 x 1777	2795 x 2001	2795 x 1955

SINGLE DOOR SETS - Reverse Opening / Opening Inward

		STANDARD DOOR WIDTH						
STANDARD DOOR HEIGHT		533mm	610mm	762mm	826mm	838mm	915mm	926mm
	1981mm	2076 x 663	2076 x 740	2076 x 892	2076 x 956	2076 x 968	2076 x 1045	2076 x 1056
	2040mm	2135 x 663	2135 x 740	2135 x 892	2135 x 956	2135 x 968	2135 x 1045	2135 x 1056
	2083mm	2178 x 663	2178 x 740	2178 x 892	2178 x 956	2178 x 968	2178 x 1045	2178 x 1056
	2200mm	2295 x 663	2295 x 740	2295 x 892	2295 x 956	2295 x 968	2295 x 1045	2295 x 1056
	2400mm	2495 x 663	2495 x 740	2495 x 892	2495 x 956	2495 x 968	2495 x 1045	2495 x 1056
	2700mm	2795 x 663	2795 x 740	2795 x 892	2795 x 956	2795 x 968	2795 x 1045	2795 x 1056

DOUBLE DOOR SETS [REBATED] - Reverse Opening / Opening Inward

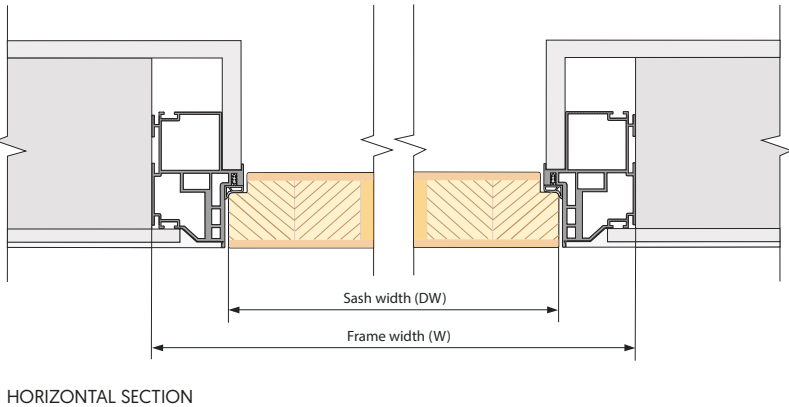
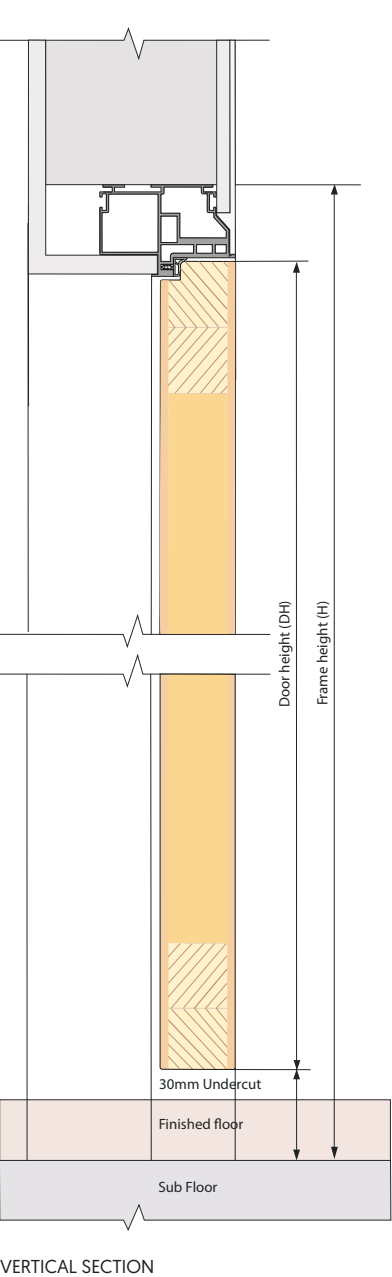
		STANDARD DOOR WIDTHS					
STANDARD DOOR HEIGHT		2 x 533mm	2 x 610mm	2 x 762mm	2 x 826mm	2 x 838mm	2 x 915mm
	1981mm	2076 x 1191	2076 x 1345	2076 x 1649	2076 x 1777	2076 x 2001	2076 x 1955
	2040mm	2135 x 1191	2135 x 1345	2135 x 1649	2135 x 1777	2135 x 2001	2135 x 1955
	2083mm	2178 x 1191	2178 x 1345	2178 x 1649	2178 x 1777	2178 x 2001	2178 x 1955
	2200mm	2295 x 1191	2295 x 1345	2295 x 1649	2295 x 1777	2295 x 2001	2295 x 1955
	2400mm	2495 x 1191	2495 x 1345	2495 x 1649	2495 x 1777	2495 x 2001	2495 x 1955
	2700mm	2795 x 1191	2795 x 1345	2795 x 1649	2795 x 1777	2795 x 2001	2795 x 1955

MADE TO MEASURE SIZE GUIDE

To calculate 'Made to Measure' Door Set sizes and structural opening sizes, the following formulas MUST be adhered to.

CONCEALED DOOR FRAME SYSTEM (FD30)

DOOR SETS - OPENING OUTWARD



HORIZONTAL SECTION

TO CALCULATE STRUCTURAL OPENING from door leaf size

SINGLE DOOR SETS
Structural opening width = Door width + 130mm
Structural opening height = Door height + 95mm

DOUBLE DOOR SETS (REBATED)
Structural opening width = [Door width x 2] + 125mm
Structural opening height = Door height + 95mm

TO CALCULATE FRAME SIZE from Structural Opening

SINGLE DOOR SETS / DOUBLE DOOR SETS (REBATED)
Frame width = Structural opening width – 30mm
Frame height = Structural opening height – 15mm
Frame depth* = Finished wall reveal depth – 1mm (rounded down to nearest multiple of 20mm e.g. 140mm)
*Frame depth is finished wall to finished wall. Please specify wall construction; ie. masonry/stud/ tiles/plaster/ wall cladding. When measuring Structural Depth walls must be straight and level.

TO CALCULATE DOOR LEAF SIZE from Structural Opening

SINGLE DOOR SETS
Door width = Structural opening width – 130mm
Door height = Structural opening height – 95mm

DOUBLE DOOR SETS (REBATED)
Each door width = [Structural opening width - 125mm] ÷ 2
Door height = Structural opening height – 95mm

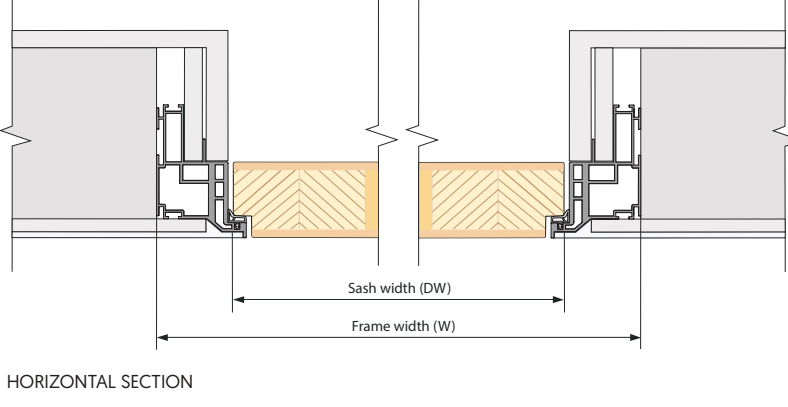
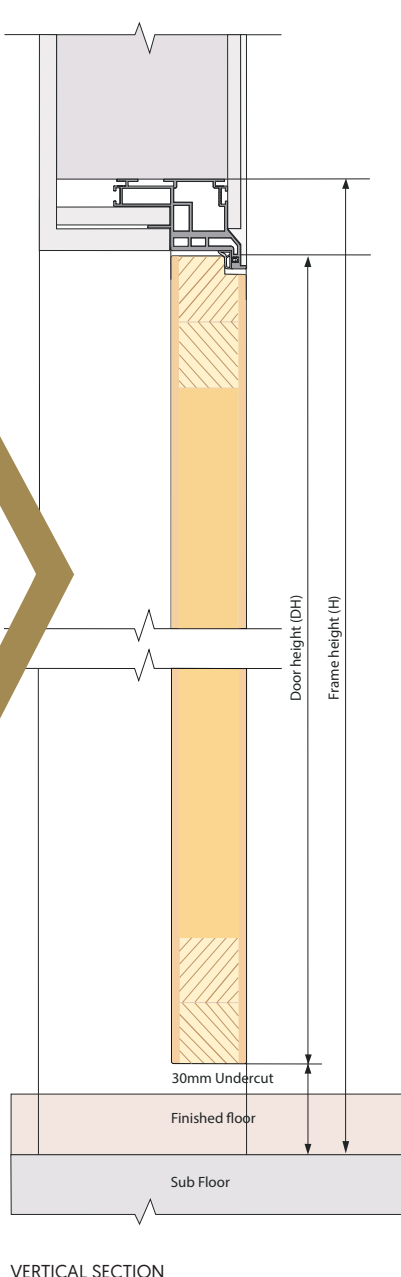
TO CALCULATE DOOR LEAF SIZE from frame size

SINGLE DOOR SETS
Door width = Frame width – 100mm
Door height = Frame height – 80mm
Door depth: FD30 = 50mm

DOUBLE DOOR SETS (REBATED)
Each door width = [Frame width – 95mm] ÷ 2
Door height = Frame height – 80mm
Door depth: FD30 = 50mm

Please note, the necessary tolerances have been included within these calculations.

DOOR SETS - REVERSE OPENING / OPENING INWARD



HORIZONTAL SECTION

TO CALCULATE STRUCTURAL OPENING from door leaf size

SINGLE DOOR SETS
Structural opening width = Door width + 130mm
Structural opening height = Door height + 95mm

DOUBLE DOOR SETS (REBATED)
Structural opening width = [Door width x 2] + 125mm
Structural opening height = Door height + 95mm

TO CALCULATE FRAME SIZE from Structural Opening

SINGLE DOOR SETS / DOUBLE DOOR SETS (REBATED)
Frame width = Structural opening width – 30mm
Frame height = Structural opening height – 15mm
Frame depth* = Finished wall reveal depth – 1mm (rounded down to nearest multiple of 20mm e.g. 140mm)
*Frame depth is finished wall to finished wall. Please specify wall construction; ie. masonry/stud/ tiles/plaster/ wall cladding. When measuring Structural Depth walls must be straight and level.

TO CALCULATE DOOR LEAF SIZE from Structural Opening

SINGLE DOOR SETS
Door width = Structural opening width – 130mm
Door height = Structural opening height – 95mm

DOUBLE DOOR SETS (REBATED)
Each door width = [Structural opening width - 125mm] ÷ 2
Door height = Structural opening height – 95mm

TO CALCULATE DOOR LEAF SIZE from frame size

SINGLE DOOR SETS
Door width = Frame width – 100mm
Door height = Frame height – 80mm
Door depth: FD30 = 50mm

DOUBLE DOOR SETS (REBATED)
Each door width = [Frame width – 95mm] ÷ 2
Door height = Frame height – 80mm
Door depth: FD30 = 50mm

Please note, the necessary tolerances have been included within these calculations.

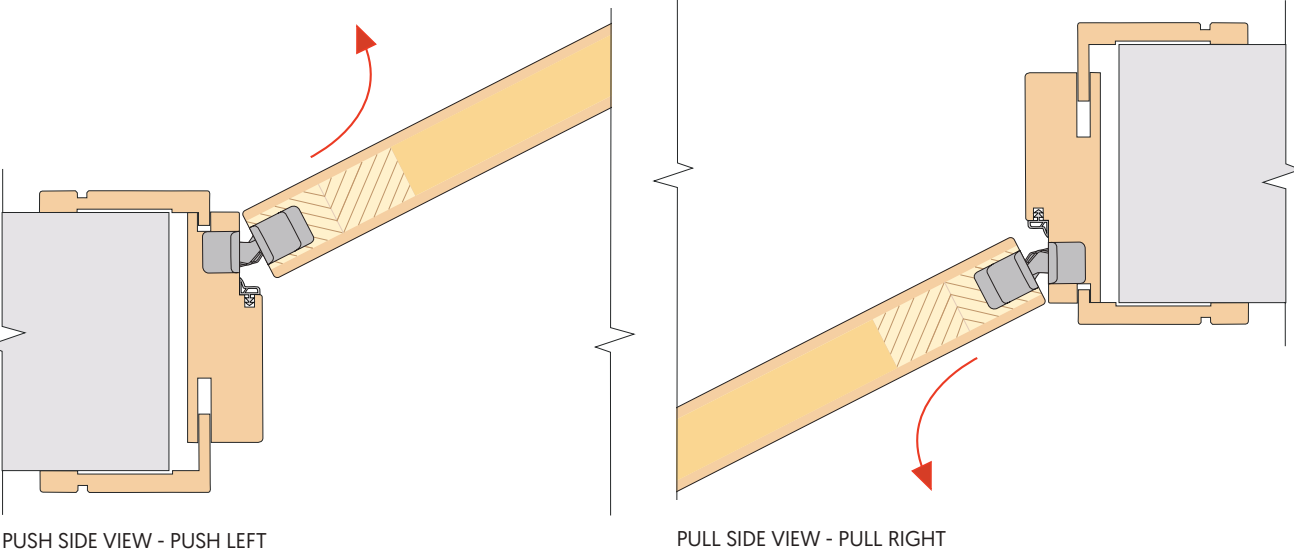
DOOR HANDING

Our Internal Door Sets open outwards as standard. The direction of the door swing as it is opened is referred to as the "handing" of the door. Doors can be right handed or left handed.

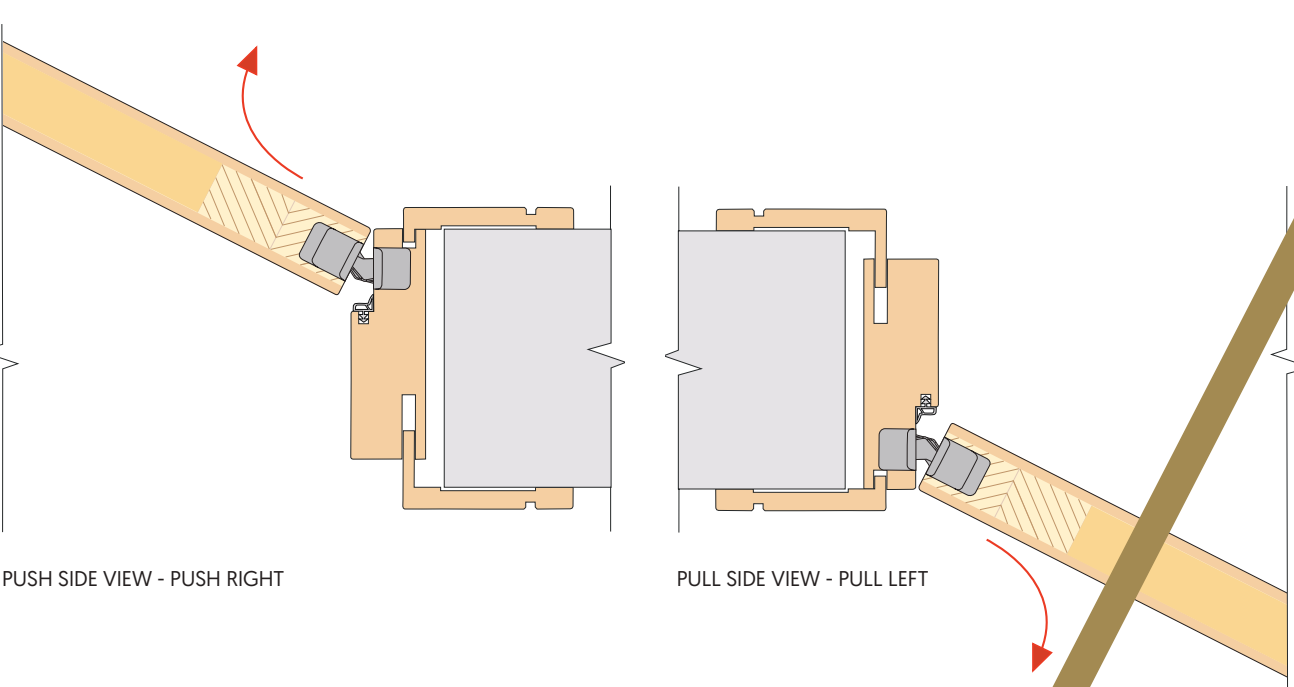
SINGLE DOOR SETS - OPENING OUTWARD

From the push side view of the door, the door reveal can be seen and the door will push away from you. From the pull side view, the door is flush and will pull towards you. Door sets can be fitted to face either way. For example, a right handed door, 'PUSH LEFT' is the same as a right handed door 'PULL RIGHT'. A left handed door, 'PUSH RIGHT' is the same as left handed door, 'PULL LEFT'.

RIGHT HANDED DOOR



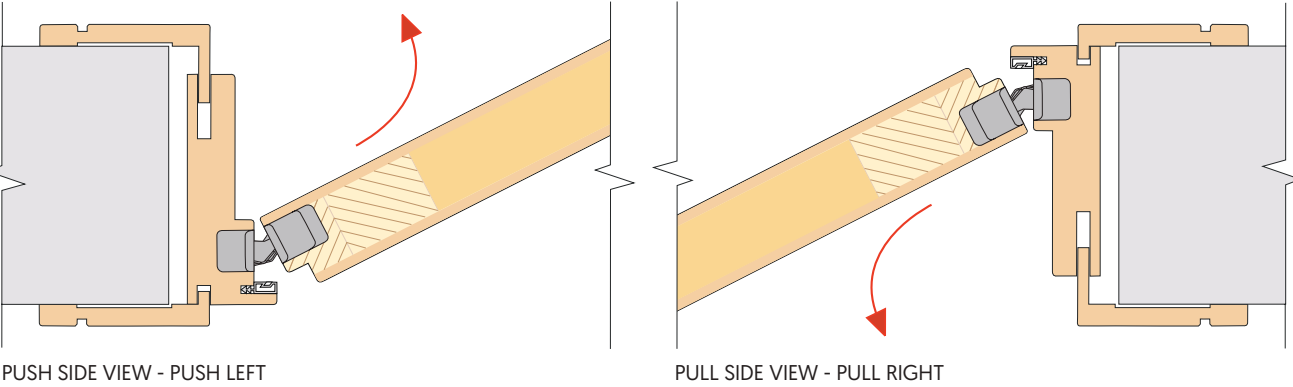
LEFT HANDED DOOR



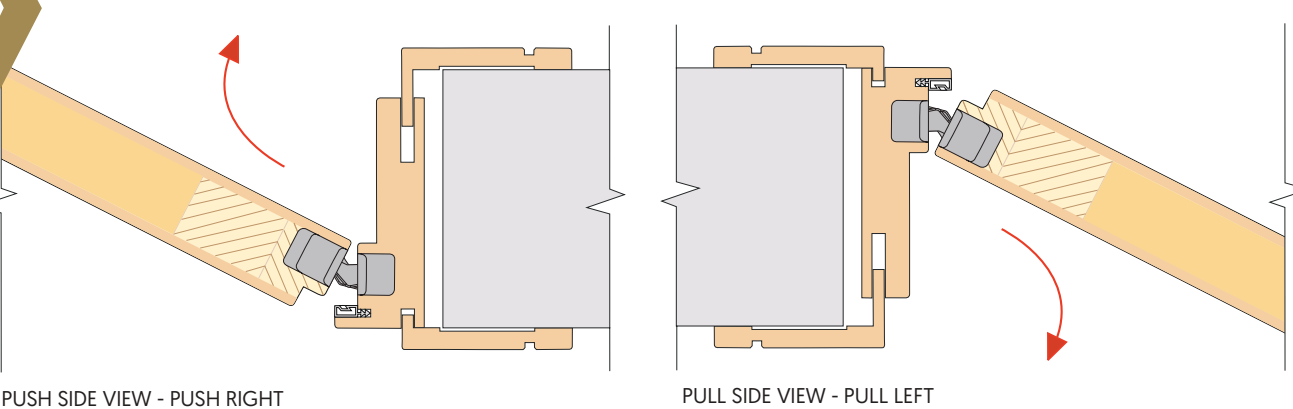
SINGLE DOOR SETS - REVERSE OPENING / OPENING INWARD

Our Internal Door Sets can be manufactured to be reverse opening [often referred to as inward opening]. This is particularly aesthetic where door reveals are required to face the same way, such as in a hallway. Reverse Opening / Opening Inward Door Sets are also often required for our Shadow Gap Frame System and Concealed Door Frame System where doors may be clad with panelling or wall cladding.

RIGHT HANDED DOOR

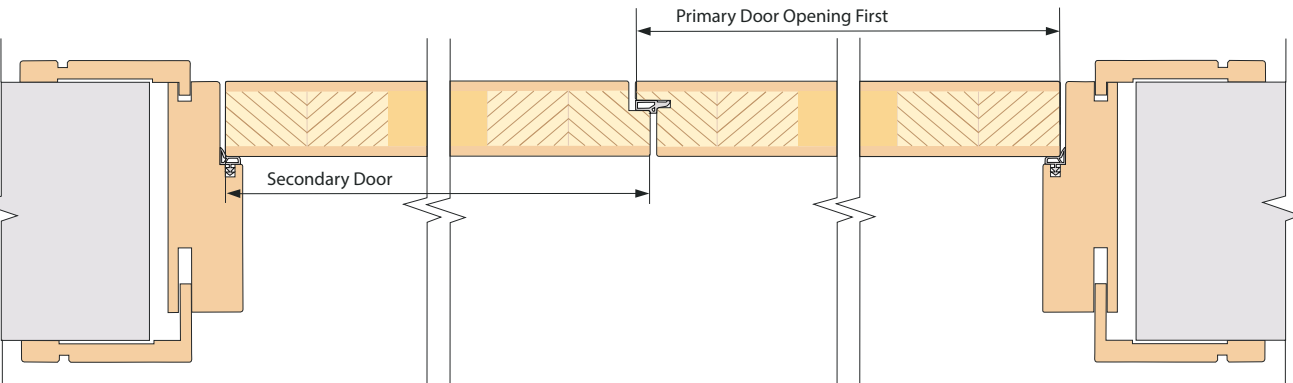


LEFT HANDED DOOR



DOUBLE DOOR SETS (REBATED) - OPENING OUTWARD

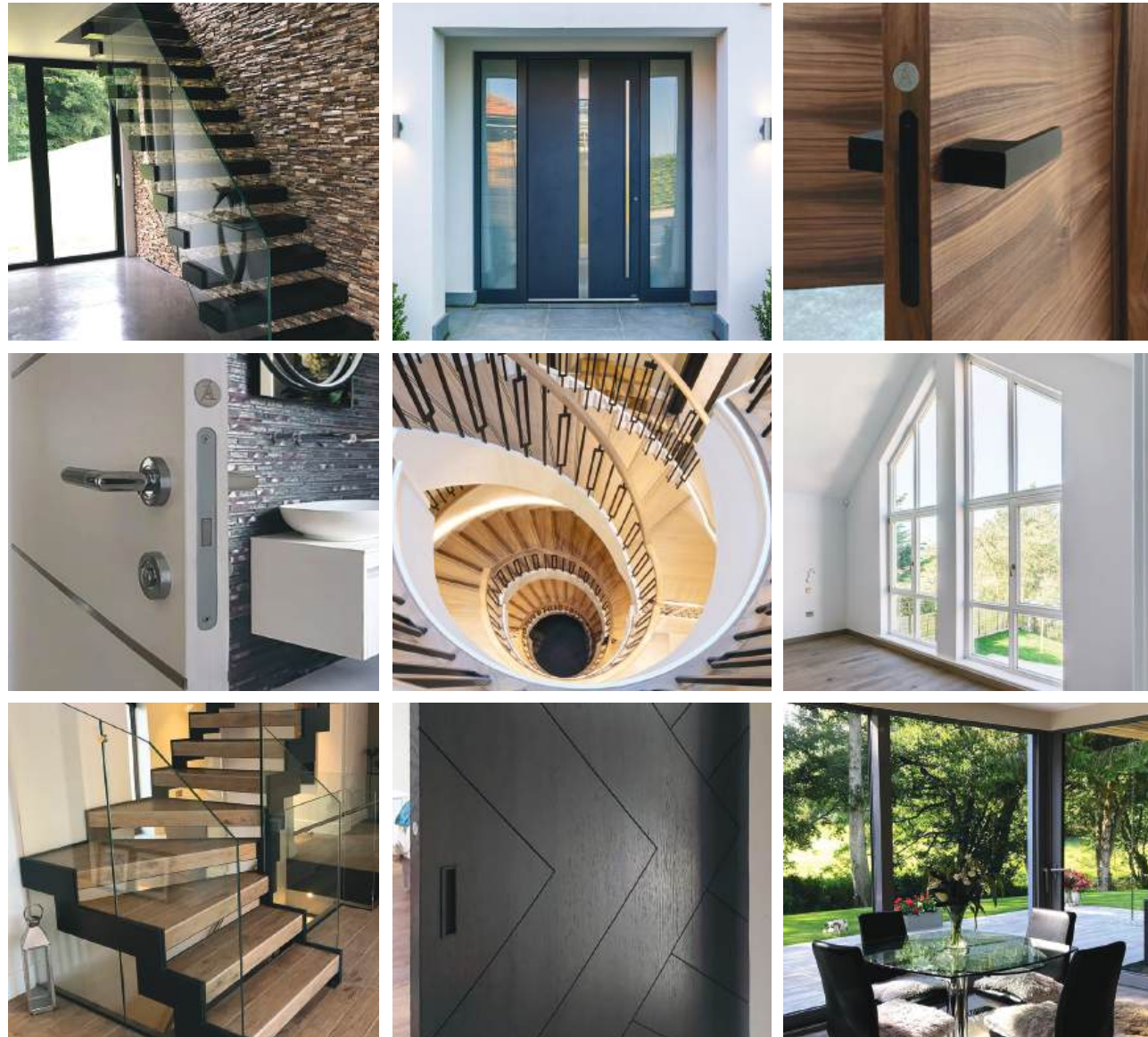
Our Double Door Sets have rebated leading edges, with pre-installed shoot-bolts, fitted to the secondary door as standard. The door that is opened first, is referred to as the 'primary' door. As viewed from the push side, the primary door can be either left handed or right handed, to suit your design and flow of traffic.



RIGHT HANDED PRIMARY DOOR

PUSH SIDE VIEW - PRIMARY DOOR, PUSH RIGHT

Creating dynamic spaces



We work closely with customers, interior designers, architects and contractors to provide a fully bespoke service for residential and commercial staircases. With our endless design possibilities we can also offer colour cohesion across our product range.

Our highly experienced project management team provides each of our clients with a highly personal service to suit the specific requirements of design, quality, specification, budget and installation. We can advise and help complement your project, selecting products that will enhance, add value and exude quality.

Our expertise, fast response and enthusiasm are key to delivering products on time. Our production team provides meticulous control over manufacturing, attention to detail and installation. Ultimately, we thrive to deliver unique and exciting design solutions to maximise the success of your project.

INTERNAL STAIRCASES

INTERNAL TIMBER DOOR SETS

FERRO PORTE STEEL & GLASS INTERNAL DOORS

INTERNAL TIMBER WALL CLADDING

EXTERNAL STAIRCASES

ENTRANCE DOORS

EXTERNAL DOORS

WINDOWS

EXTERNAL TIMBER WALL CLADDING



